

| | | |
|-------------|----------|-------------|
| APP CRS | Rwy Ldg | 7755 |
| 299° | TDZE | 25 |
| | Apt Elev | 28 |

RNAV (GPS) RWY 30

MERCEDITA (PSE) (TJPS)

RNP APCH.

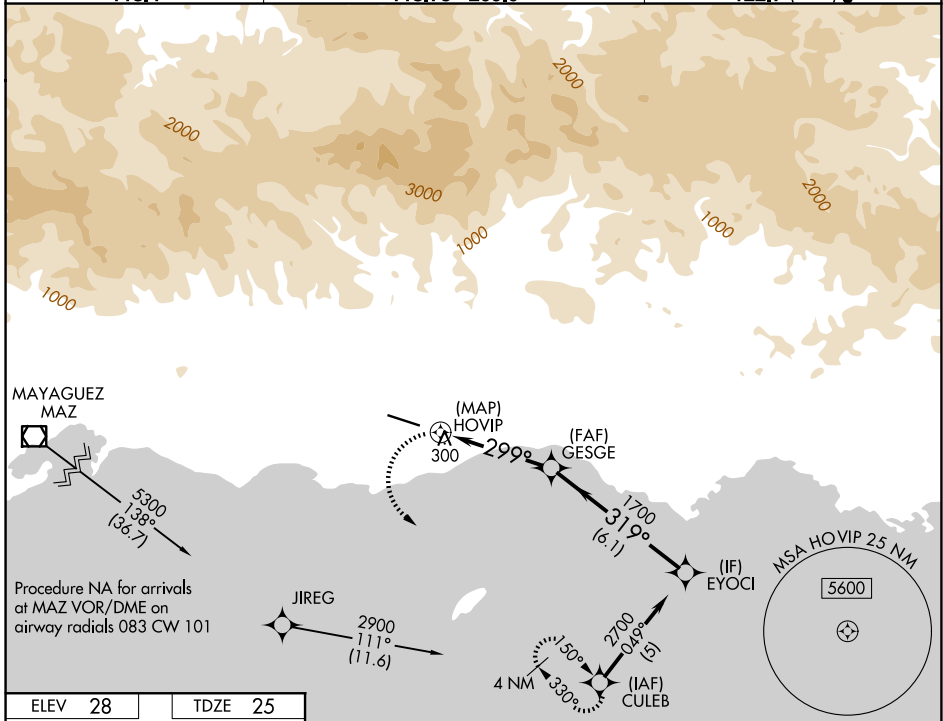
▼ Rwy 12, 30 helicopter visibility reduction below 1 SM NA. Obtain local altimeter setting on CTAF; when not received, use Luis Munoz Marin Intl altimeter setting.
▲NA Circling NA for Cats C and D northeast of Rwy 12-30. Circling Rwy 12 NA at night.

MISSED APPROACH: Climbing left turn to 2900 direct CULEB and hold.

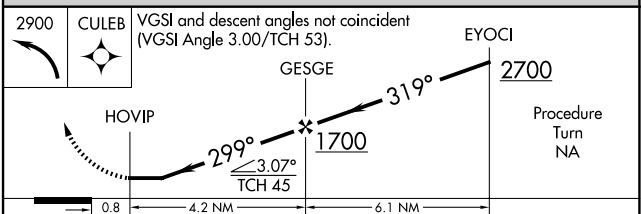
AWOS-3PT
118.4

SAN JUAN CERAP APP CON
118.75 269.0

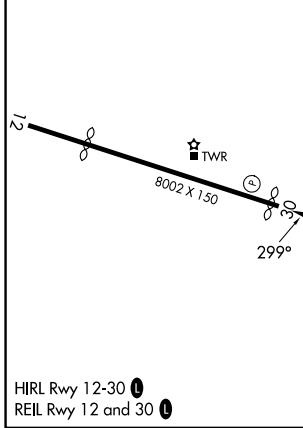
UNICOM
122.7 (CTAF) 0



| | |
|---------|---------|
| ELEV 28 | TDZE 25 |
|---------|---------|



| CATEGORY | A | B | C | D |
|--|---------------------------|---------------------------|-------------------------|-------------------------|
| LNAV MDA | 600-1 | 575 (600-1) | 600-1½ 575 (600-1½) | 600-1¾ 575 (600-1¾) |
| CIRCLING | 840-1¼ | 812 (900-1¼) | 840-2½ 812 (900-2½) | 1040-3 1012 (1100-3) |
| LUIS MUNOZ MARIN INTL ALTIMETER SETTING MINIMUMS | | | | |
| LNAV MDA | 1200-1¼ 1175 (1200-1¼) | 1200-1½ 1175 (1200-1½) | 1200-3 | 1175 (1200-3) |
| CIRCLING | 1440-1¼ 1412 (1500-1¼) | 1440-1½ 1412 (1500-1½) | 1440-3 1412 (1500-3) | 1640-3 1612 (1700-3) |



SE-3, 16 APR 2026 to 14 MAY 2026

SE-3, 16 APR 2026 to 14 MAY 2026