

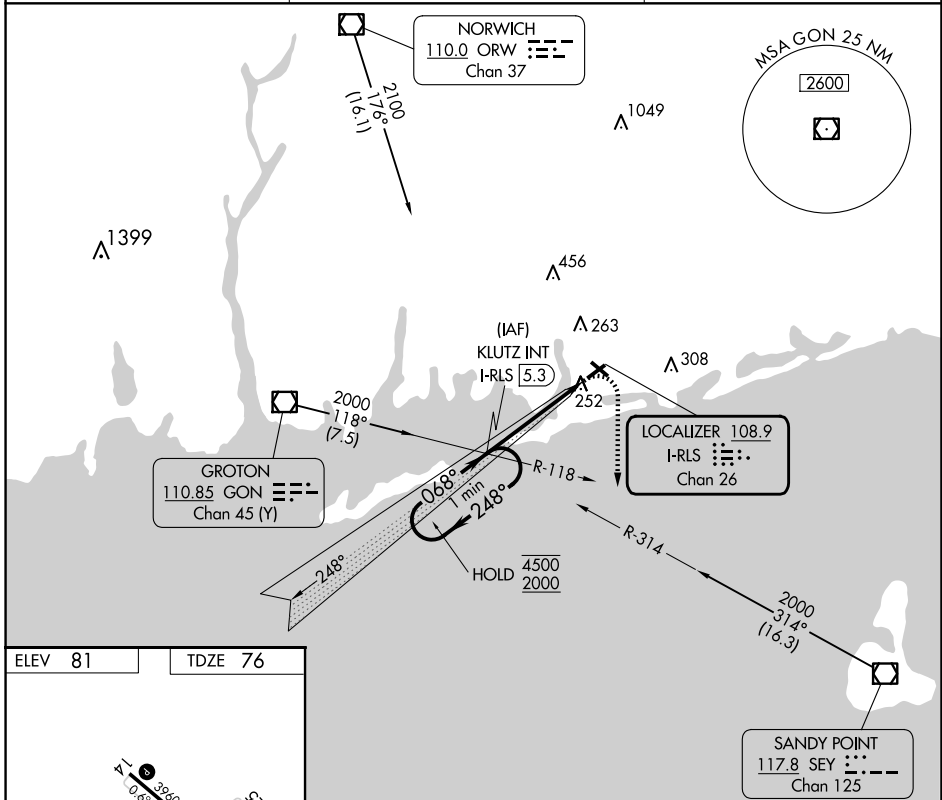
LOC/DME I-RLS 108.9 Chan 26	APP CRS 068°	Rwy Idg TDZE Apt Elev	4010 76 81
--	------------------------	-----------------------------	---------------------------------------

LOC RWY 7

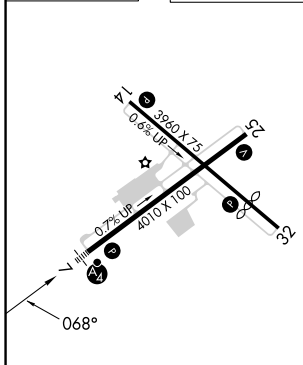
WESTERLY STATE (WST)

<p>NA</p> <p>⚠ Circling to Rwy 14 and 32 NA at night. Rwy 7 helicopter visibility reduction below 3/4 SM NA. Inop table does not apply.</p>	<p>MALSF</p>	<p>MISSED APPROACH: Climbing right turn to 2000 on heading 180° and SEY R-314 to KLUTZ INT/I-RLS 5.3 DME and hold, continue climb-in-hold to 2000.</p>
--	--------------	--

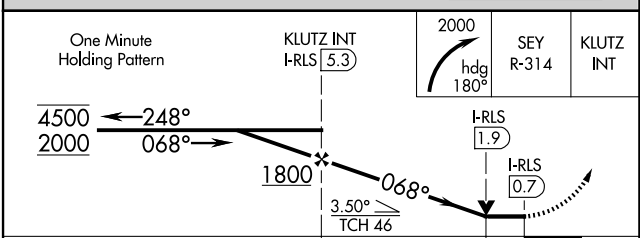
ASOS 132.375	PROVIDENCE APP CON * 119.45 319.2	UNICOM 123.0 (CTAF) 0
------------------------	---	---------------------------------



ELEV 81	TDZE 76
---------	---------



REIL Rws 14, 25 and 32	MIRL Rws 7-25 and 14-32				
FAF to MAP 4.6 NM					
Knots	60	90	120	150	180
Min:Sec	4:36	3:04	2:18	1:50	1:32



CATEGORY	A	B	C	D
S-7	520-1	444 (500-1)	520-1 3/8	444 (500-1 3/8)
CIRCLING	580-1	499 (500-1)	720-2 639 (700-2)	760-2 1/4 679 (700-2 1/4)

NE-1, 16 APR 2026 to 14 MAY 2026

NE-1, 16 APR 2026 to 14 MAY 2026