

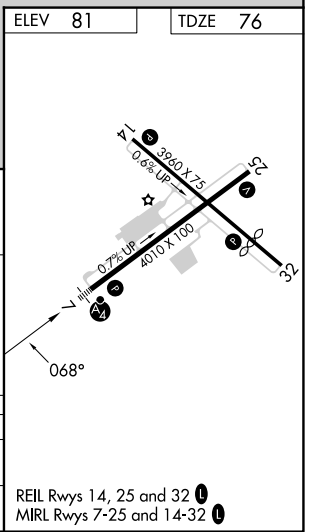
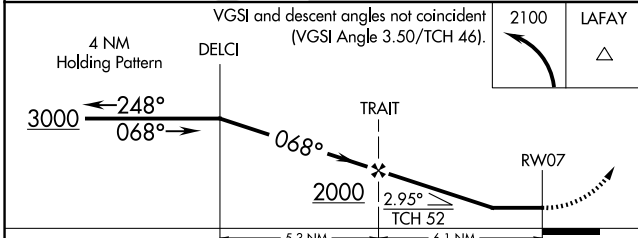
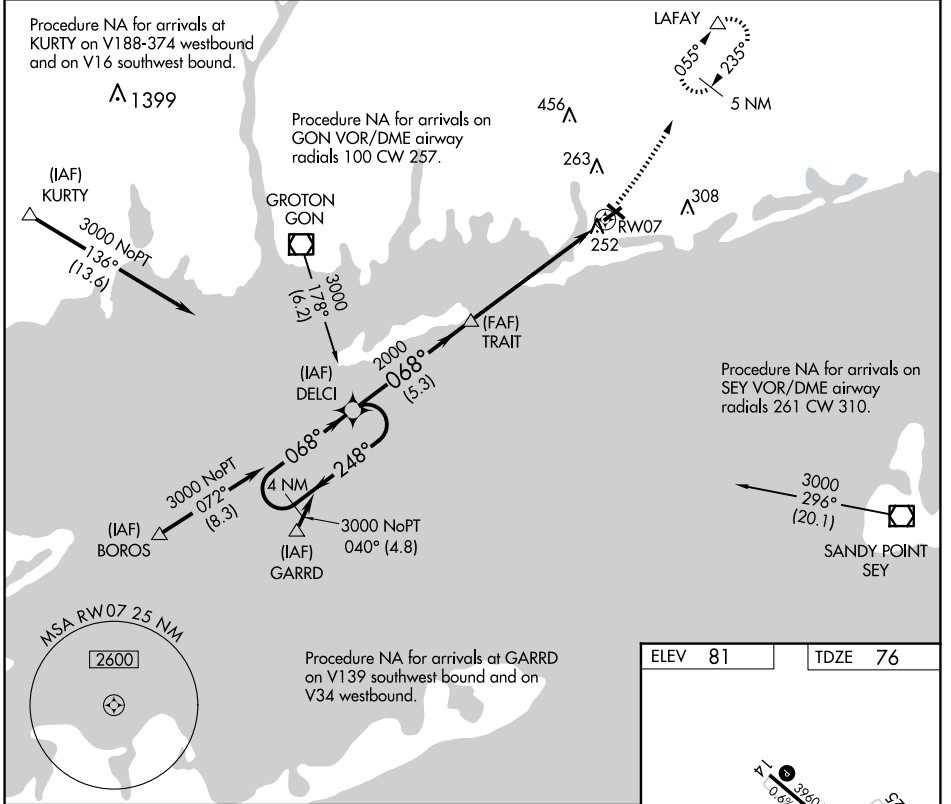
APP CRS 068°	Rwy Idg 4010
	TDZE 76
	Apt Elev 81

RNAV (GPS) RWY 7

WESTERLY STATE (WST)

▼ Inoperative table does not apply. DME/DME RNP-0.3 NA. ▲ NA	MALSF 	MISSED APPROACH: Climbing left turn to 2100 direct LAFAY and hold.
---	------------------	---

ASOS 132.375	PROVIDENCE APP CON * 119.45 319.2	UNICOM 123.0 (CTAF) 0
------------------------	---	---------------------------------



CATEGORY	A	B	C	D
LNVA MDA	520-1 444 (500-1)	520-1¼ 444 (500-1¼)	520-1½ 444 (500-1½)	520-1¾ 444 (500-1¾)
CIRCLING	580-1 499 (500-1)	720-1¾ 639 (700-1¾)	760-2¼ 679 (700-2¼)	

NE-1, 16 APR 2026 to 14 MAY 2026

NE-1, 16 APR 2026 to 14 MAY 2026