

LOC/DME I-SFZ	APP CRS	Rwy Ldg	5000
111.9	047°	TDZE	429
Chan 56		Apt Elev	441

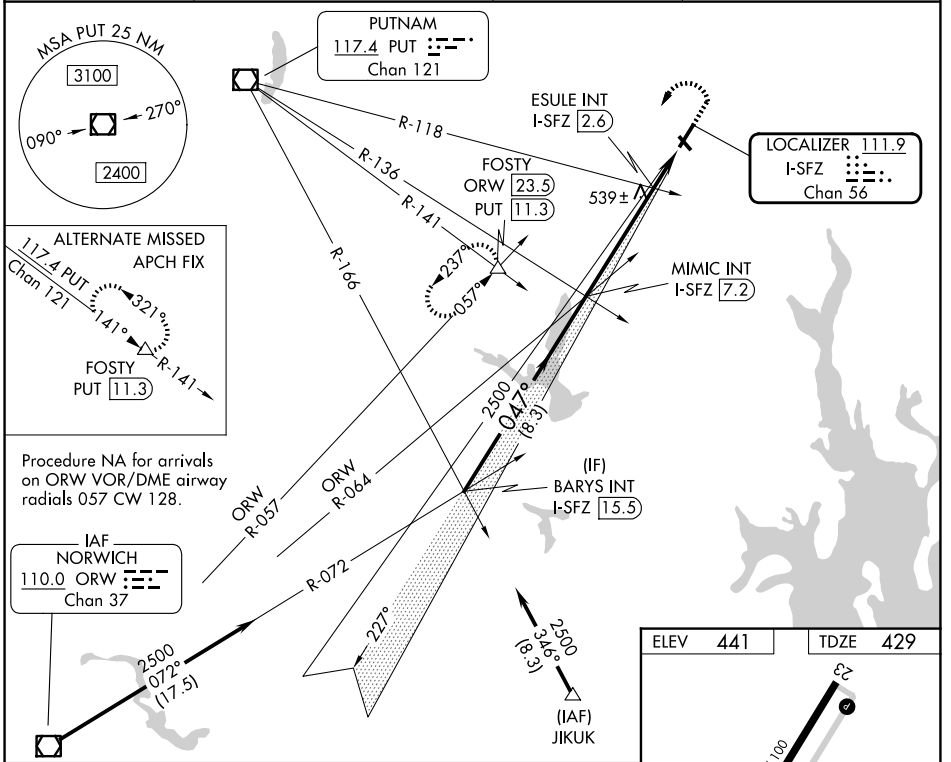
LOC RWY 5

NORTH CENTRAL STATE (SF/Z)

NA Circling Rwy 15, 33 NA at night. VDP NA with Providence altimeter setting. When local altimeter setting not received, use Providence altimeter setting and increase all MDA 100 feet; increase S-5 Cat C and Circling Cat C visibility ¼ mile, and ESULE fix minimums S-5 Cat C visibility ¼ mile.

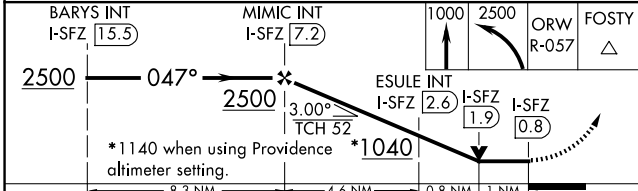
MALS MISSED APPROACH: Climb to 1000 then climbing left turn to 2500 on ORW VOR/DME R-057 to FOSTY INT/ ORW 23.5 DME and hold.

AWOS-3PT 120.775	PROVIDENCE APP CON ★ 123.675 244.875	CLNC DEL 124.35	UNICOM 123.075 (CTAF) 0
---------------------	---	--------------------	----------------------------



Procedure NA for arrivals on ORW VOR/DME airway radials 057 CW 128.

IAF NORWICH
110.0 ORW
Chan 37



CATEGORY	A	B	C	D
S-5	1040-¾ 611 (600-¾)		1040-1½ 611 (600-1½)	NA
CIRCLING	1040-1 599 (600-1)		1040-1¾ 599 (600-1¾)	NA
ESULE FIX MINIMUMS (DUAL VOR RECEIVERS OR DME REQUIRED)				
S-5	800-¾ 371 (400-¾)		800-⅞ 371 (400-⅞)	NA
CIRCLING	900-1 459 (500-1)		900-1½ 459 (500-1½)	NA

ELEV 441	TDZE 429
----------	----------

HIRL Rwy 5-23 0
MIRL Rwy 15-33 0
REIL Rws 15, 23 and 33 0

FAF to MAP 6.4 NM					
Knots	60	90	120	150	180
Min:Sec	6:24	4:16	3:12	2:34	2:08

NE-1, 16 APR 2026 to 14 MAY 2026

NE-1, 16 APR 2026 to 14 MAY 2026