

WAAS CH <b>86431</b> <b>W23A</b>	APP CRS <b>227°</b>	Rwy Ldg TDZE Apt Elev	<b>5000</b> <b>429</b> <b>441</b>
--	------------------------	-----------------------------	---

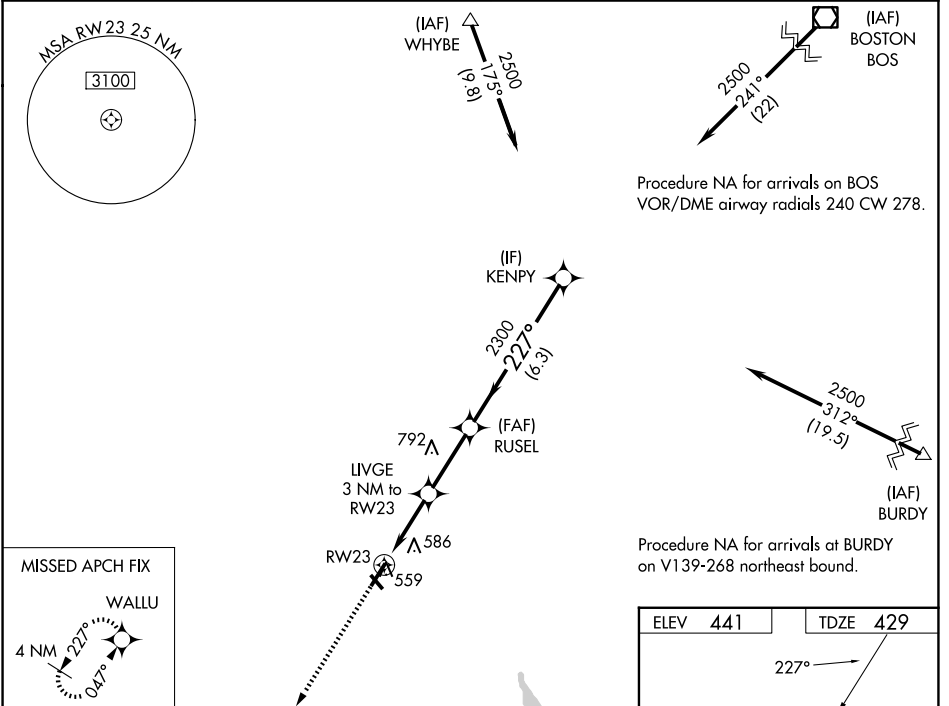
# RNAV (GPS) RWY 23

NORTH CENTRAL STATE (S'F'Z)

**⚠** Circling Rwy 15, 33 NA at night. Baro-VNAV NA when using Providence altimeter setting. For uncompensated Baro-VNAV systems, LNAV/VNAV NA below -15°C (4°F) or above 54°C (130°F).  
**⚠** DME/DME RNP-0.3 NA. VDP NA with Providence altimeter setting. When local altimeter setting not received, use Providence altimeter setting and increase all DA 82 feet and all MDA 100 feet; increase LPV all Cats visibility to 1/8, LNAV/VNAV all Cats visibility to 1/4 and LNAV Cat C visibility to 3/8. Rwy 23 helicopter visibility reduction below 3/4 SM NA.

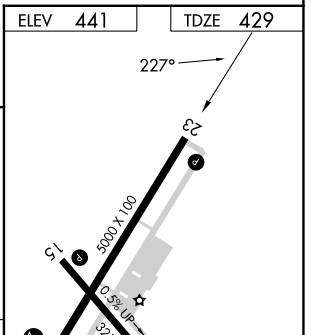
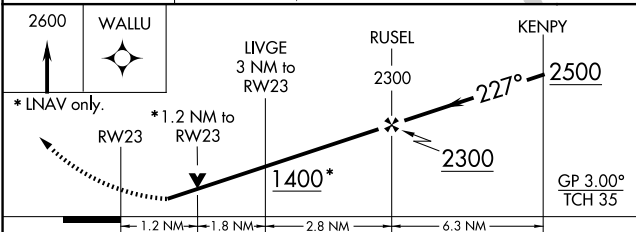
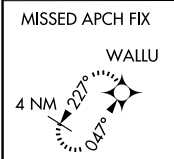
**MISSED APPROACH:**  
Climb to 2600 direct WALLU and hold.

AWOS-3PT <b>120.775</b>	PROVIDENCE APP CON ★ <b>123.675 244.875</b>	CLNC DEL <b>124.35</b>	UNICOM <b>123.075 (CTAF) 0</b>
----------------------------	--	---------------------------	-----------------------------------

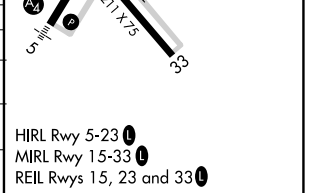


Procedure NA for arrivals on BOS  
VOR/DME airway radials 240 CW 278.

Procedure NA for arrivals at BURDY  
on V139-268 northeast bound.



CATEGORY	A	B	C	D
LPV DA	679-7/8	250 (300-7/8)		NA
LNAV/VNAV DA	849-1 1/2	420 (500-1 1/2)		NA
LNAV MDA	820-1 391 (400-1)		820-1 1/8 391 (400-1 1/8)	NA
CIRCLING	900-1 459 (500-1)		900-1 1/2 459 (500-1 1/2)	NA



HIRL Rwy 5-23 0  
MIRL Rwy 15-33 0  
REIL Rws 15, 23 and 33 0

NE-1, 16 APR 2026 to 14 MAY 2026

NE-1, 16 APR 2026 to 14 MAY 2026