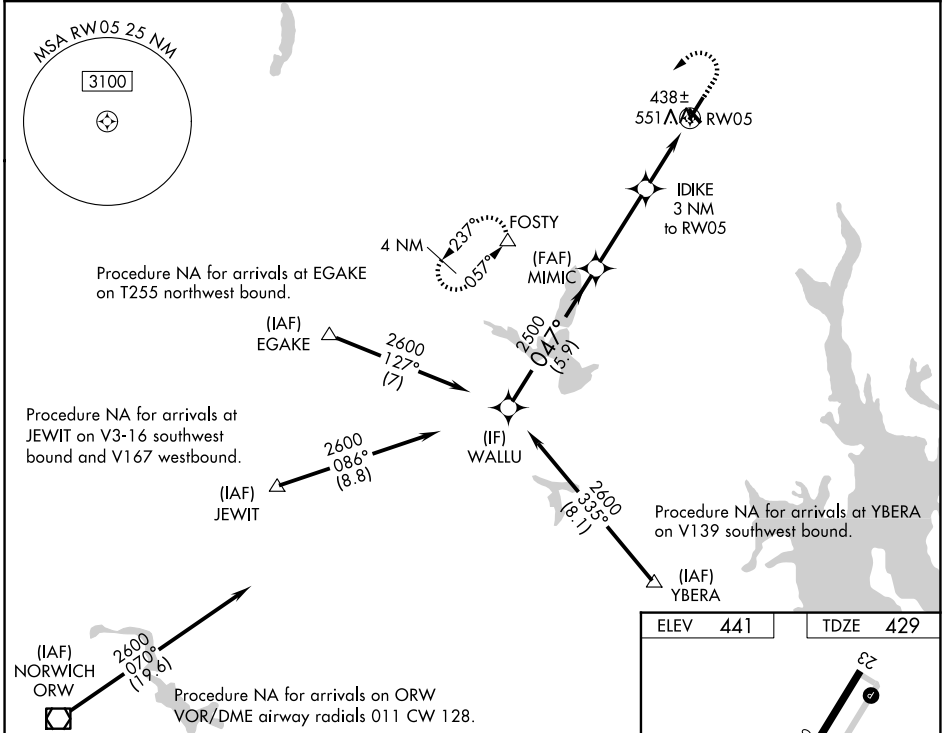


WAAS CH 50231 W05A	APP CRS 047°	Rwy Ldg TDZE 429 Apt Elev 441	5000
--	------------------------	---	-------------

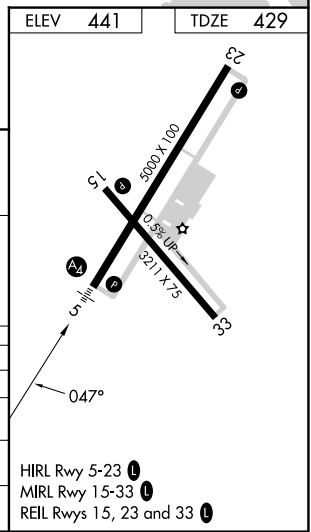
RNAV (GPS) RWY 5

NORTH CENTRAL STATE (SF'Z)

RNP APCH - GPS.		MALS	MISSED APPROACH: Climb to 2000 then climbing left turn to 2500 direct FOSTY and hold.
<p>⚠ Circling Rwy 15, 33 NA at night. For inoperative MALS, increase LPV all Cats visibility to 3/8 mile. For inop ALS, increase LPV all Cats visibility to 3/8 SM and LNAV/VNAV all Cats visibility to 1 1/8 SM. For uncompensated Baro-VNAV systems, LNAV/VNAV NA below -15°C or above 54°C.</p>			
AWOS-3PT 120.775	PROVIDENCE APP CON * 123.675 244.875	CLNC DEL 124.35	UNICOM 123.075 (CTAF) 0



WALLU		2000	2500	FOSTY
2600		047°		△
GP 3.00° TCH 52		2500		
5.9 NM		3.4 NM		1.1 NM to RW05
MIMIC		IDIKE		
2500		3 NM to RW05		
*1420		1.1 NM to RW05		
5.9 NM		3.4 NM		1.1 NM
CATEGORY	A	B	C	D
LPV DA	700-3/4		271 (300-3/4)	NA
LNAV/VNAV DA	835-1		406 (400-1)	NA
LNAV MDA	820-3/4	391 (400-3/4)	820-7/8 391 (400-7/8)	NA
CIRCLING	900-1	459 (500-1)	900-1 1/2 459 (500-1 1/2)	NA



HIRL Rwy 5-23 0
MIRL Rwy 15-33 0
REIL Rwy 15, 23 and 33 0

NE-1, 16 APR 2026 to 14 MAY 2026

NE-1, 16 APR 2026 to 14 MAY 2026