

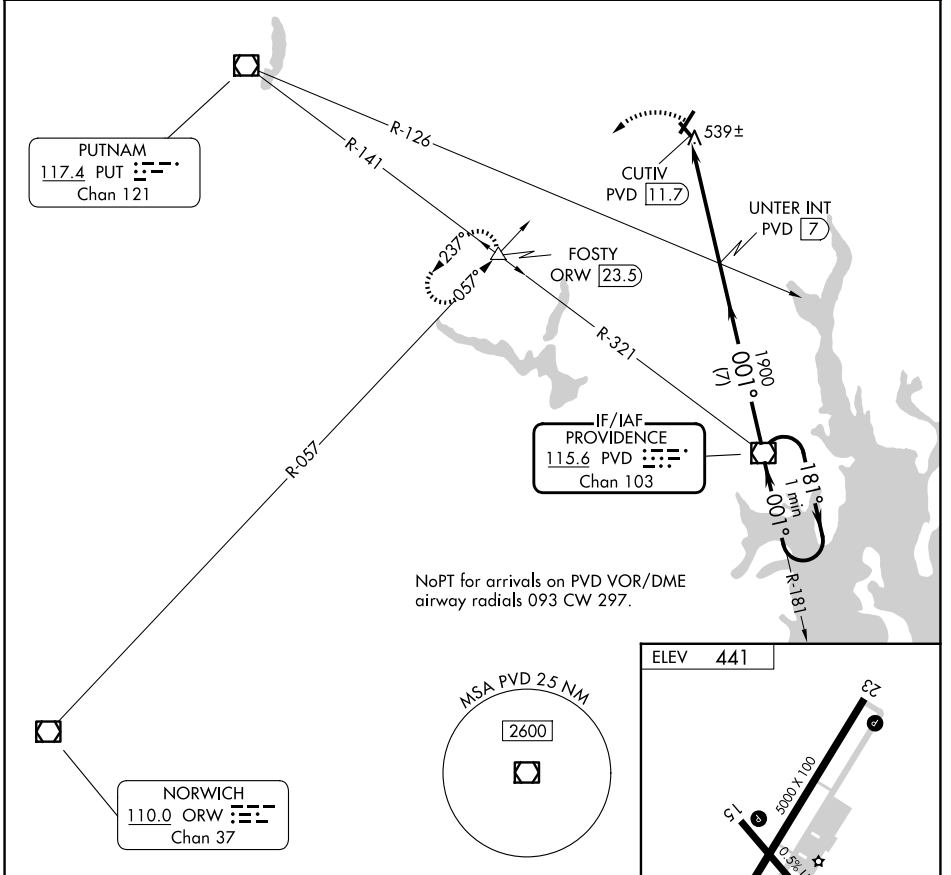
VOR/DME PVD <b>115.6</b> Chan <b>103</b>	APP CRS <b>001°</b>	Rwy Ldg TDZE Apt Elev <b>441</b>	<b>N/A</b> <b>N/A</b> <b>441</b>
--	------------------------	--	--

**VOR-A**  
NORTH CENTRAL STATE (SF'Z)

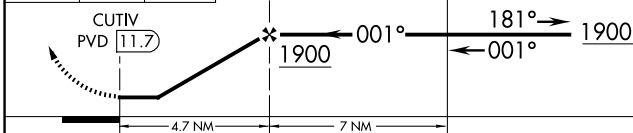
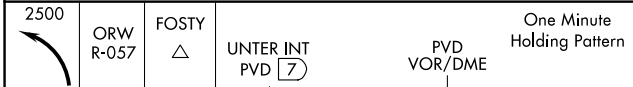
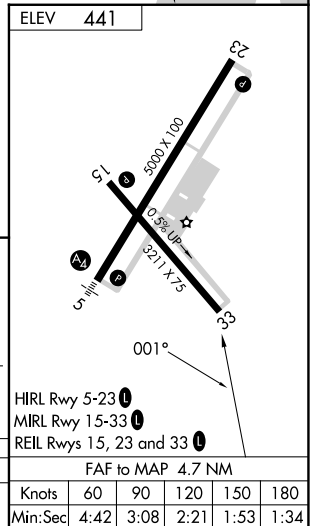
**⚠** When local altimeter setting not received, use Providence altimeter setting and increase all MDA 100 feet, increase Circling visibility Cat C ¼ mile. Circling to Rwy 15/33 NA at night.

MISSED APPROACH: Climbing left turn to 2500 via ORW VOR/DME R-057 to FOSTY INT/ORW 23.5 DME and hold.

AWOS-3PT <b>120.775</b>	PROVIDENCE APP CON ★ <b>123.675 244.875</b>	CLNC DEL <b>124.35</b>	UNICOM <b>123.075 (CTAF) 0</b>
----------------------------	--	---------------------------	-----------------------------------



NoPT for arrivals on PVD VOR/DME airway radials 093 CW 297.



CATEGORY	A	B	C	D
CIRCLING	980-1 539 (600-1)		980-1½ 539 (600-1½)	NA

FAF to MAP 4.7 NM					
Knots	60	90	120	150	180
Min:Sec	4:42	3:08	2:21	1:53	1:34

NE-1, 16 APR 2026 to 14 MAY 2026

NE-1, 16 APR 2026 to 14 MAY 2026