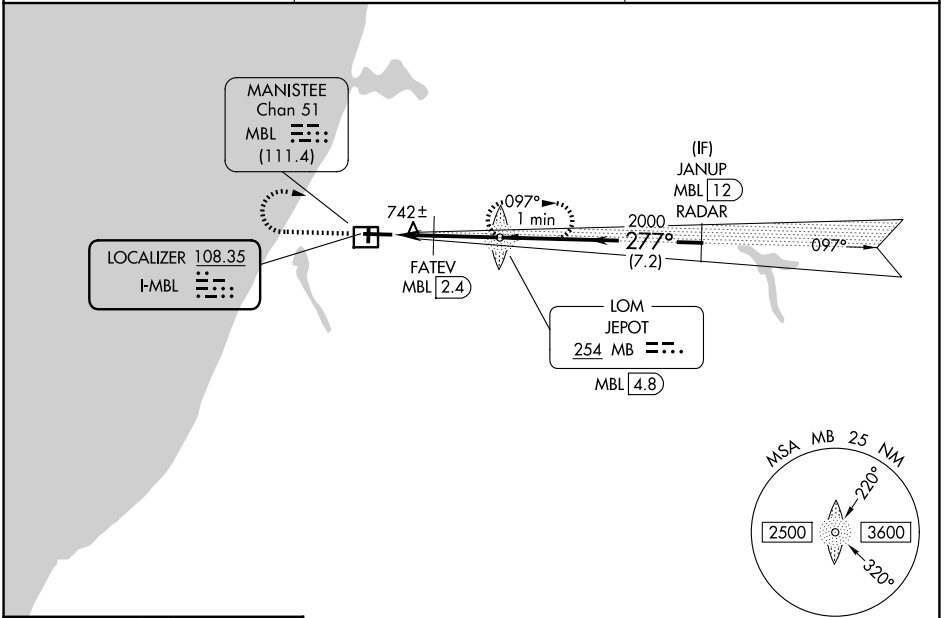


| | | |
|----------------------------|------------------------|------------------------|
| LOC I-MBL 108.35 | APP CRS 277° | Rwy Ldg 5501 |
| | | TDZE 621 |
| | | Apt Elev 621 |

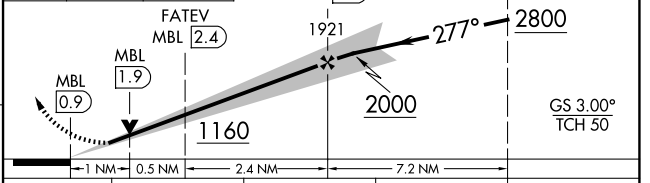
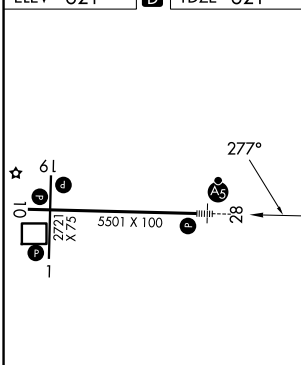
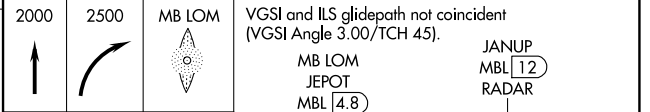
ILS or LOC RWY 28

MANISTEE COUNTY/BLACKER (MBL)

| | | | |
|--|--|---------------------------------|--|
| ADF required for missed approach. RADAR required for procedure entry. DME or RADAR required. | | MALSR | MISSED APPROACH: Climb to 2000 then climbing right turn to 2500 direct JEPOT LOM/MBL 4.8 DME and hold. |
| Circling Rwy 1, 19 NA at night. For inop ALS, increase FATEV fix minimums S-LOC 28 Cat C and D visibility to 1 SM. DME from MBL DME. DME use requires simultaneous reception of I-MBL and MBL DME. | | | |
| AWOS-3PT 118.825 | MINNEAPOLIS CENTER 120.85 322.35 | UNICOM 122.8 (CTAF) 0 | |



ELEV 621 **D** TDZE 621



| | | | | |
|--------------------|-----------------------|-----------------------|-------------------------------|-----------------------|
| CATEGORY | A | B | C | D |
| S-ILS 28 | 821-1/2 200 (200-1/2) | | | |
| S-LOC 28 | 1160-1/2 | 539 (600-1/2) | 1160-1 | 539 (600-1) |
| CIRCLING | 1160-1 539 (600-1) | 1220-1 599 (600-1) | 1400-2 1/4 779 (800-2 1/4) | 1520-3 899 (900-3) |
| FATEV FIX MINIMUMS | | | | |
| S-LOC 28 | 1000-1/2 | 379 (400-1/2) | 1000-5/8 | 379 (400-5/8) |
| CIRCLING | 1160-1 539 (600-1) | 1220-1 599 (600-1) | 1400-2 1/4 779 (800-2 1/4) | 1520-3 899 (900-3) |

FAF to MAP 3.9 NM

| | | | | | |
|---------|------|------|------|------|------|
| Knots | 60 | 90 | 120 | 150 | 180 |
| Min:Sec | 3:54 | 2:36 | 1:57 | 1:34 | 1:18 |

EC-1, 16 APR 2026 to 14 MAY 2026

EC-1, 16 APR 2026 to 14 MAY 2026