

WAAS CH <b>61005</b> <b>W21A</b>	APP CRS <b>207°</b>	Rwy Ldg TDZE Apt Elev	<b>5008</b> <b>980</b> <b>996</b>
----------------------------------------	------------------------	-----------------------------	-----------------------------------------

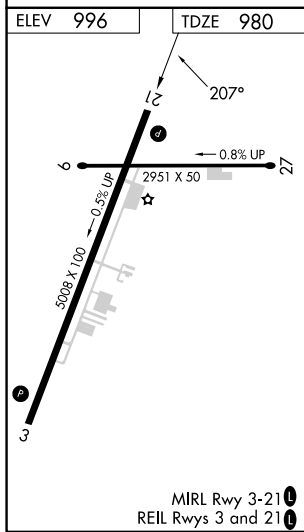
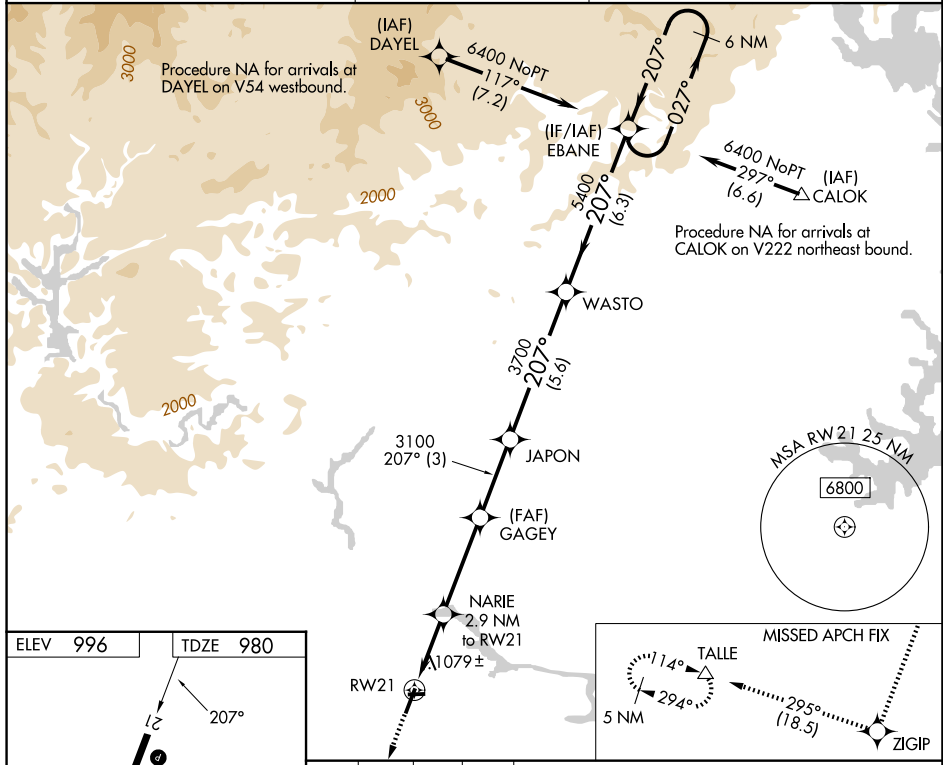
# RNAV (GPS) RWY 21

TOCCOA RG LETOURNEAU FLD (TOC)

**RNP APCH:**  
 ▼ Baro-VNAV and VDP NA when using Gainesville altimeter setting. For uncompensated Baro-VNAV systems, LNAV/VNAV NA below -8°C or above 54°C. When local altimeter setting not received, use Gainesville altimeter setting: Increase LPV DA to 1345 feet, LNAV/VNAV DA to 1510 feet, and increase all MDAs 120 feet, increase LNAV/LNAV visibility all Cats ½ SM, LNAV visibility Cats C/D ¾ SM and Circling visibility Cats A/B ¼ SM and Cat C ½ SM. Circling Rwy 9, 27 NA at night.

**MISSED APPROACH:**  
 Climb to 5800 direct ZIGIP and on track 295° to TALLE and hold, continue climb-in-hold to 5800.

AWOS-3 <b>119.625</b>	ATLANTA CENTER <b>134.8 379.95</b>	UNICOM <b>122.8 (CTAF) 0</b>
--------------------------	---------------------------------------	---------------------------------



ELEV 996	TDZE 980								
5800	ZIGIP	TALLE	* LNAV only		EBANE		6 NM Holding Pattern		
	↑	tr 295°			JAPON	WASTO	207° ← 207° → 6400		
			NARIE 2.9 NM to RW21	GAGEY 3100		3700	5400		GP 3.00° TCH 33
			*1.8 NM to RW21	*1920	3100				
			1.8 1.1 NM	3.7 NM	3 NM	5.6 NM	6.3 NM		
CATEGORY		A	B	C	D				
LPV DA		1230-1		250 (300-1)					
LNAV/VNAV DA		1395-1½		415 (400-1½)					
LNAV MDA	1560-1	580 (600-1)		1560-1½		580 (600-1½)			
CIRCLING	1720-1	724 (800-1)		1760-2¼		764 (800-2¼)		2480-3 1484 (1500-3)	

SE-4, 16 APR 2026 to 14 MAY 2026

SE-4, 16 APR 2026 to 14 MAY 2026