

WAAS CH 77847 W08A	APP CRS 080°	Rwy Ldg 3664 TDZE 359 Apt Elev 370
--	------------------------	---

RNAV (GPS) RWY 8

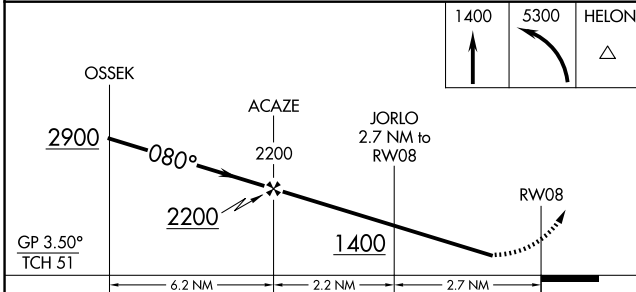
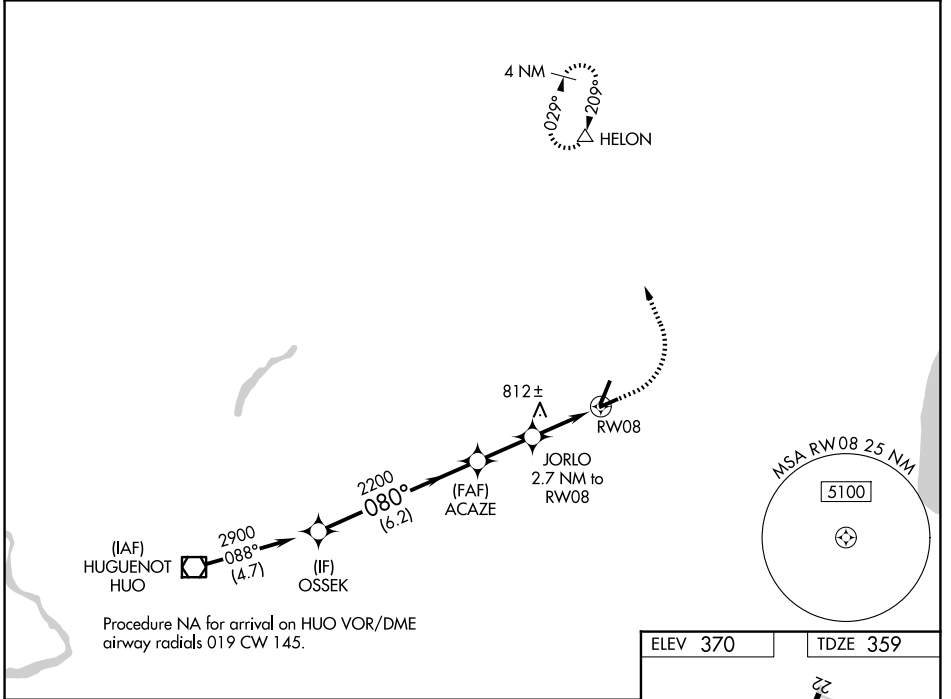
ORANGE COUNTY (MGJ)

RNP APCH - GPS.

▼ Rwy 8 helicopter visibility reduction below 1 SM NA.
 ▲ Straight-in Rwy 8 NA at night, Circling Rwy 8, 26 NA at night.

MISSED APPROACH: Climb to 1400 then climbing left turn to 5300 direct HELON and hold, continue climb in hold to 5300.

ASOS 119.275	NEW YORK APP CON 132.75 363.1	AUNICOM 122.725 (CTAF) 0
------------------------	---	------------------------------------



ELEV 370	TDZE 359
----------	----------

REIL Rwy 4 and 22
 HIRL Rwy 4-22 0
 MIRL Rwy 8-26 0

CATEGORY	A	B	C	D
LPV DA	832-1 ³ / ₈		473 (500-1 ³ / ₈)	
LNAV MDA	1080-1	721 (800-1)	1080-2	721 (800-2)
CIRCLING	1200-1 ¹ / ₄	830 (900-1 ¹ / ₄)	1200-2 ¹ / ₂ 830 (900-2 ¹ / ₂)	1240-2 ³ / ₄ 870 (900-2 ³ / ₄)

NE-2, 16 APR 2026 to 14 MAY 2026

NE-2, 16 APR 2026 to 14 MAY 2026