

WAAS CH <b>77820</b> <b>W05A</b>	APP CRS <b>050°</b>	Rwy Ldg TDZE Apt Elev	<b>6200</b> <b>259</b> <b>262</b>
--	------------------------	-----------------------------	---

# RNAV (GPS) RWY 5

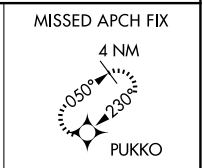
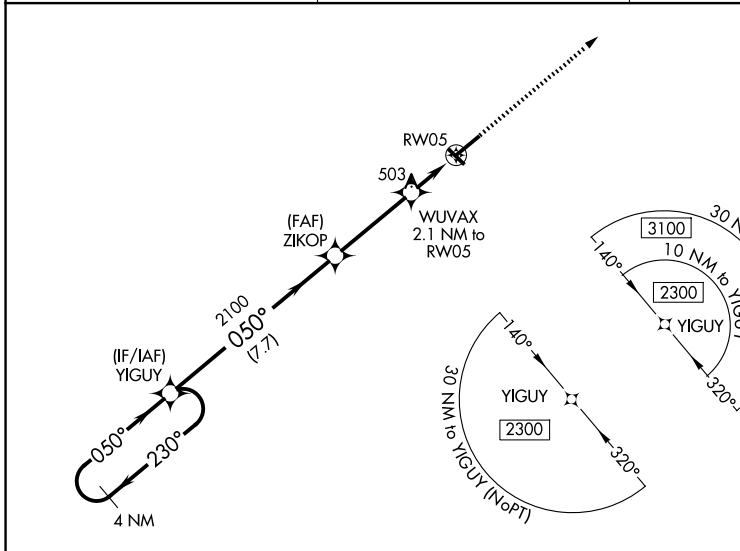
JONESBORO MUNI (JBR)

RNP APCH.

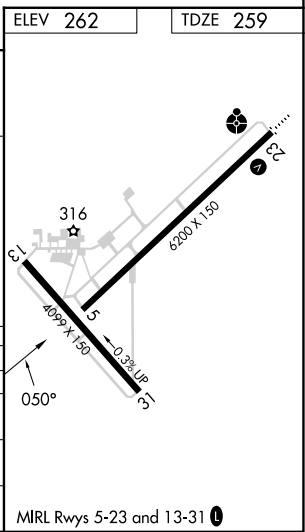
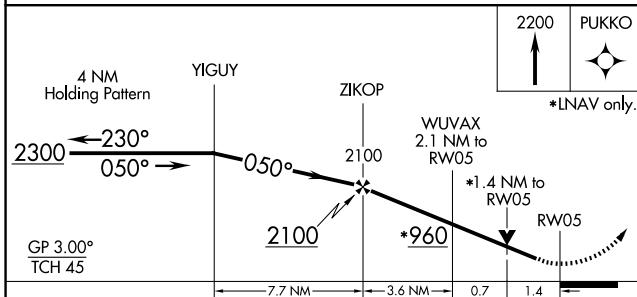
**⚠** Circling Rwy 31 NA at night. Baro-VNAV and VDP NA when using Walnut Ridge altimeter setting. For uncompensated Baro-VNAV systems, LNAV/VNAV NA below -12°C or above 54°C. Circling NA northwest of Rwy 5-23. Rwy 5 helicopter visibility reduction below 3/4 SM NA. When local altimeter setting not received, use Walnut Ridge altimeter setting: increase LPV DA to 593 feet and visibility 1/8 SM, and LNAV/VNAV DA to 669 feet; increase all MDAs 60 feet and visibility LNAV Cats C/D and Circling Cat C 1/4 SM.

**MISSED APPROACH:**  
Climb to 2200 direct PUKKO and hold.

ASOS <b>118.525</b>	MEMPHIS CENTER <b>120.075 289.4</b>	UNICOM <b>123.0 (CTAF)</b>
------------------------	--	-------------------------------



ELEV 262	TDZE 259
----------	----------



CATEGORY	A	B	C	D
LPV DA		539-7/8	280 (300-7/8)	
LNAV/VNAV DA		615-1 1/8	356 (400-1 1/8)	
LNAV MDA	760-1	501 (500-1)	760-1 3/8	501 (500-1 3/8)
CIRCLING	760-1	498 (500-1)	820-1 1/2 558 (600-1 1/2)	1080-2 3/4 818 (900-2 3/4)

SC-1, 16 APR 2026 to 14 MAY 2026

SC-1, 16 APR 2026 to 14 MAY 2026