

LOC I-DRT 111.9 Chan 56	APP CRS 132°	Rwy Ldg TDZE 1002 Apt Elev 1002
---	------------------------	---

ILS or LOC RWY 13

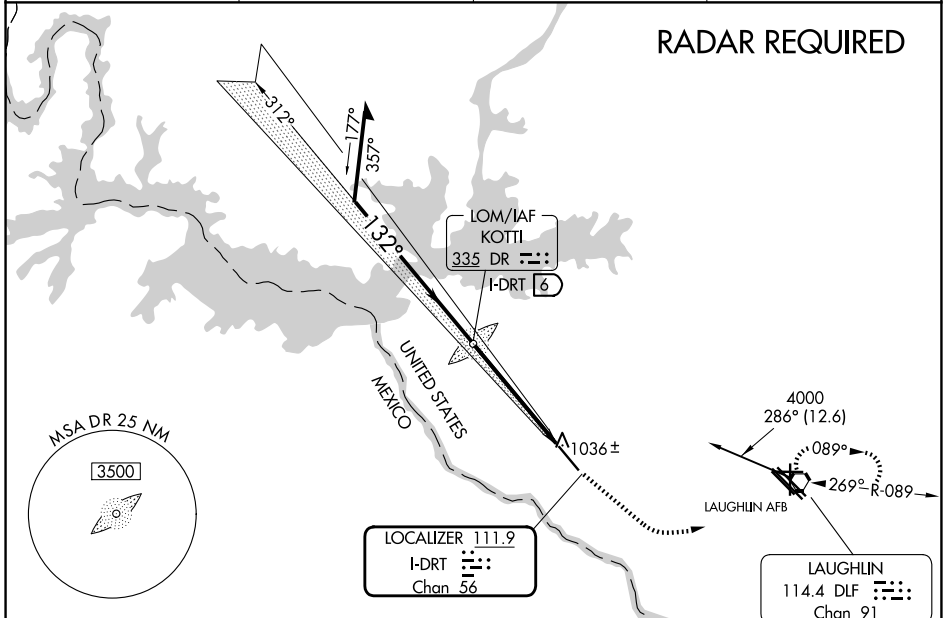
DEL RIO INTL (DRT)

NA Circling NA for Cat D SW of Rwy 13-31. When local altimeter setting not received, use Laughlin AFB altimeter setting and increase all DAs 30 feet, all MDAs 40 feet, increase S-LOC 13 Cat D and Circling Cats C and D visibility ¼ SM. VDP NA when using Laughlin AFB altimeter setting.

MALS

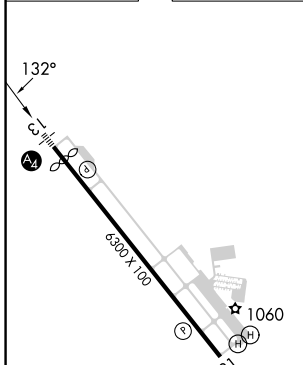
MISSED APPROACH: Climb to 2000 via heading 122° then climbing left turn to 4000 direct DLF VORTAC and hold. Continue climb-in-hold to 4000.

ASOS 118.525	DEL RIO APP CON ★ 119.6 259.1	CLNC DEL 120.5	UNICOM 122.8 (CTAF) 0
------------------------	---	--------------------------	---------------------------------



ELEV 1002	D	TDZE 1002
-----------	----------	-----------

ADF or DME REQUIRED



Remain within 10 NM	DR KOTTI LOM I-DRT 6	2000 hdg 122°	4000	DLF
3200	2673	I-DRT 2.3	I-DRT 1.2	
2700				
3.7 NM	1.2			
CATEGORY	A	B	C	D
S-ILS 13		1202-¾	200 (200-¾)	
S-LOC 13	1420-½	418 (500-½)	1420-¾	418 (500-¾)
CIRCLING	1440-1 438 (500-1)	1560-1 558 (600-1)	1740-2 738 (800-2)	1740-2¼ 738 (800-2¼)

SC-3, 16 APR 2026 to 14 MAY 2026

SC-3, 16 APR 2026 to 14 MAY 2026