

WAAS CH 97639 W17A	APP CRS 170°	Rwy Ldg TDZE 456 Apt Elev 464
----------------------------------------	------------------------	---------------------------------------------------

RNAV (GPS) RWY 17

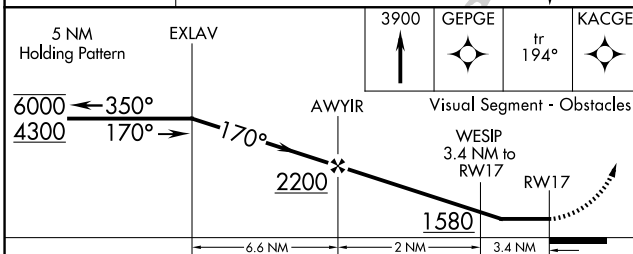
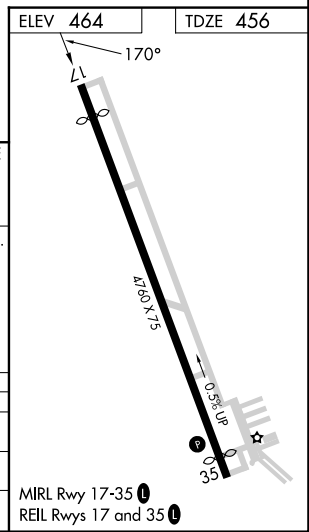
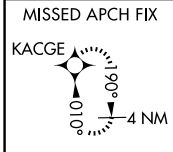
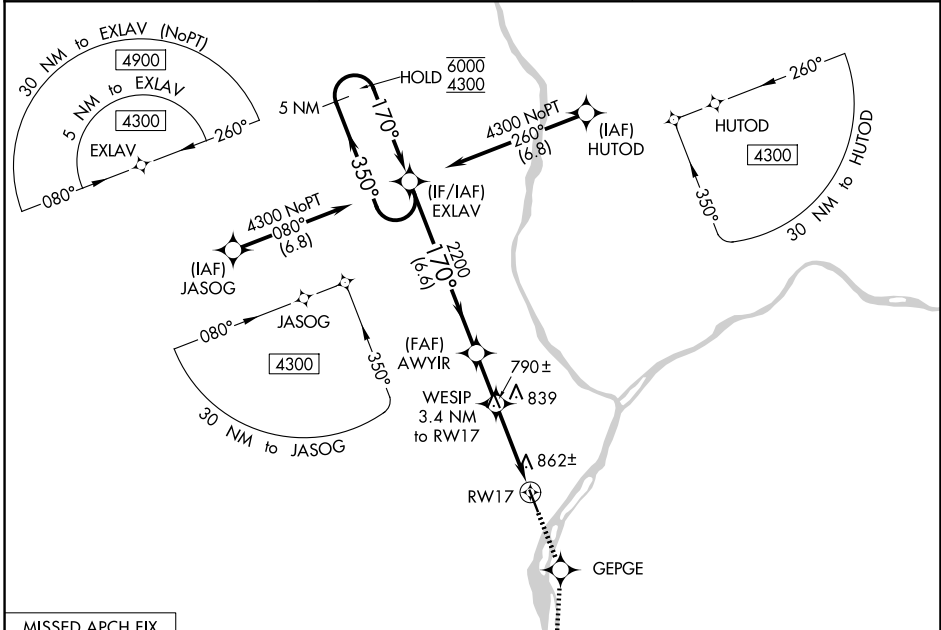
PENN VALLEY (SE/G)

RNP APCH - GPS.

⚠ Rwy 17 helicopter visibility reduction below 1 SM NA. Straight-in Rwy 17 NA at night, Circling Rwy 17 NA at night.
⚠ -13°C

MISSED APPROACH: Climb to 3900 direct GEPGE and on track 194° to KACGE and hold, continue climb-in-hold to 3900.

ASOS 123.975	HARRISBURG APP CON 118.25 269.45	UNICOM 122.7 (CTAF) ①
------------------------	--------------------------------------------	---------------------------------



CATEGORY	A	B	C	D
LP MDA	1200-1 744 (800-1)	1200-1¼ 744 (800-1¼)	1200-2	744 (800-2)
LNAV MDA	1260-1 804 (800-1)	1260-1¼ 804 (800-1¼)	1260-2½	804 (800-2½)
CIRCLING	1400-1¼	936 (1000-1¼)	1420-3 956 (1000-3)	1600-3 1136 (1200-3)

NE-4, 16 APR 2026 to 14 MAY 2026

NE-4, 16 APR 2026 to 14 MAY 2026