

SINTON, TEXAS

AL-5274 (FAA)

25219

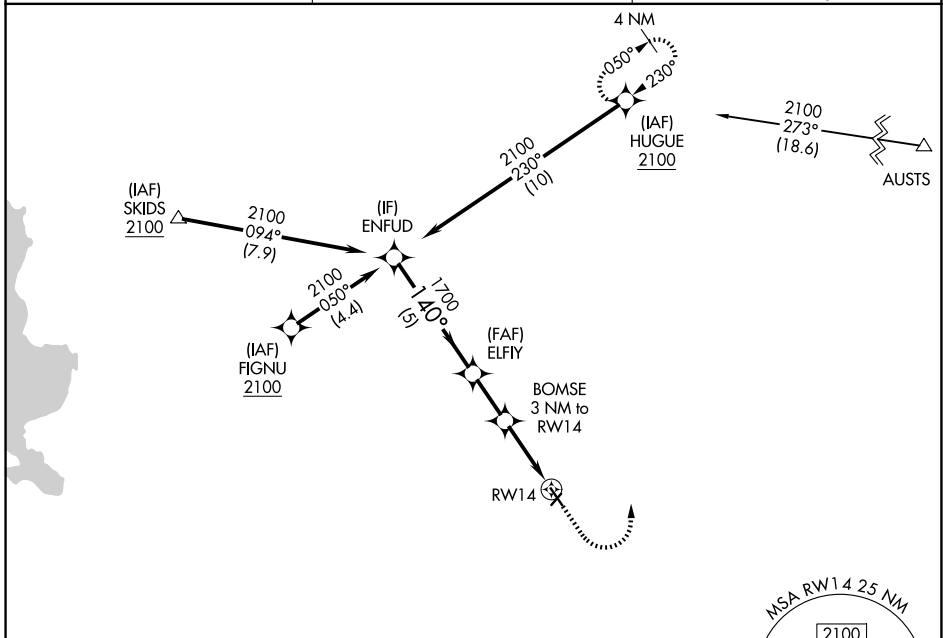
APP CRS	Rwy Ldg	4073
140°	TDZE	48
	Apt Elev	48

RNAV (GPS) RWY 14

SINTON (T69)

RNP APCH - GPS.	MISSED APPROACH: Climb to 500 then climbing left turn to 2100 direct HUGUE and hold.
<p>▼ Rwy 14 helicopter visibility reduction below 1 SM NA. ▲ Procedure NA at night.</p>	

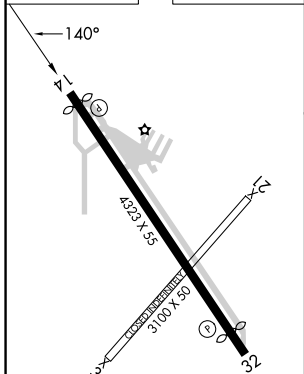
AWOS-3 118.25	CORPUS APP CON 120.9 348.725	UNICOM 122.8 (CTAF) 0
-------------------------	--	---------------------------------



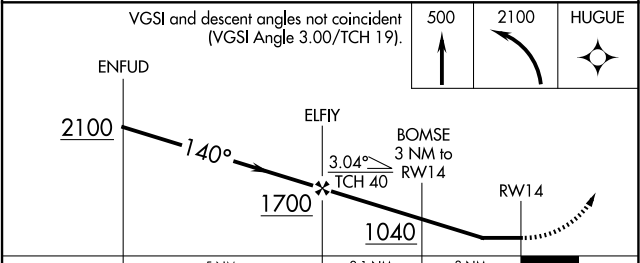
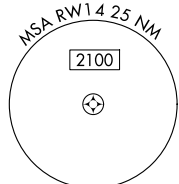
SC-3, 16 APR 2026 to 14 MAY 2026

SC-3, 16 APR 2026 to 14 MAY 2026

ELEV 48	TDZE 48
---------	---------



MIRL Rwy 14-32 0
REL Rwy 14 and 32 0



CATEGORY	A	B	C	D
LNAV MDA	420-1	372 (400-1)	NA	
CIRCLING	620-1	720-1	NA	
	572 (600-1)	672 (700-1)		

SINTON, TEXAS
 Amdt 1 07AUG25

28°02'N-97°33'W

RNAV (GPS) RWY 14

SINTON (T69)