

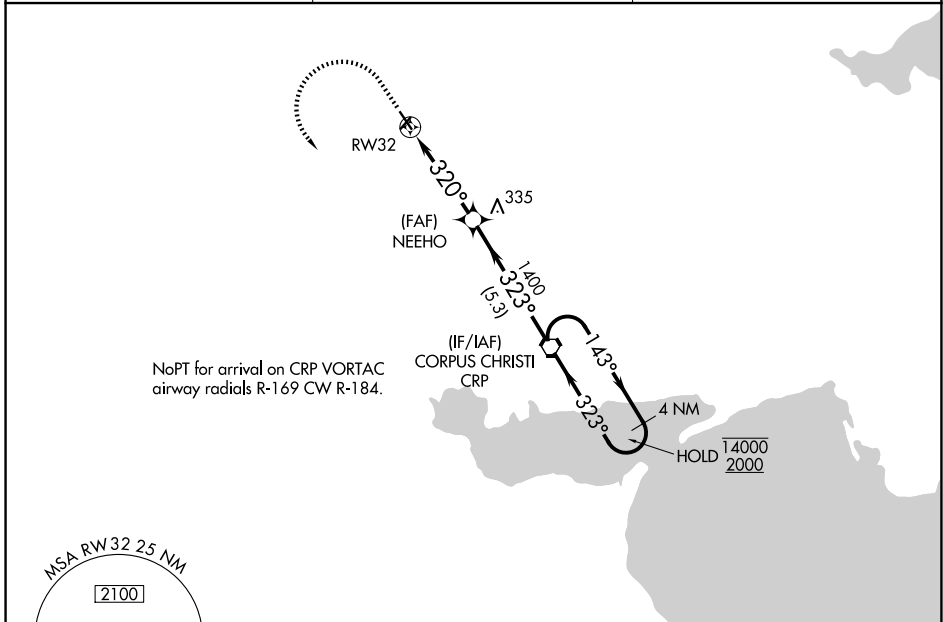
APP CRS	Rwy Ldg	3923
320°	TDZE	48
	Apt Elev	48

RNAV (GPS) RWY 32

SINTON (T69)

RNP APCH.	MISSED APPROACH: Climb to 1000 then climbing left turn to 2000 direct CRP VORTAC and hold.
<p>Procedure NA at night.</p> <p>Rwy 32 helicopter visibility reduction below 1 SM NA.</p>	

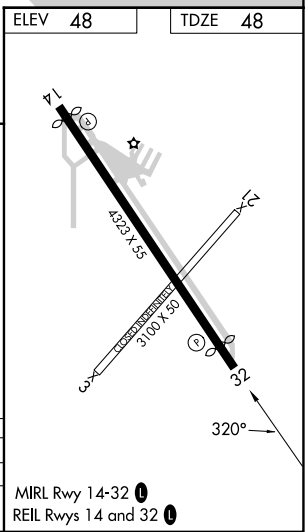
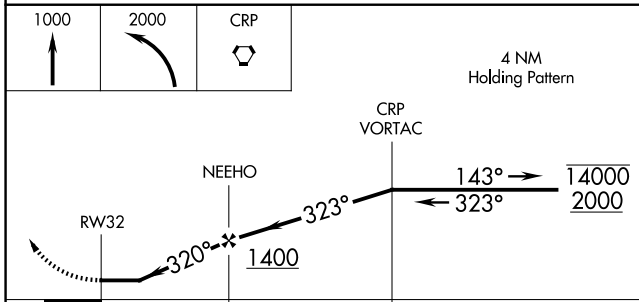
AWOS-3 118.25	CORPUS APP CON 120.9 348.725	UNICOM 122.8 (CTAF) 0
-------------------------	--	---------------------------------



SC-3, 16 APR 2026 to 14 MAY 2026

SC-3, 16 APR 2026 to 14 MAY 2026

ELEV 48	TDZE 48
----------------	----------------



CATEGORY	A	B	C	D
LNAV MDA	520-1	472 (500-1)		NA
CIRCLING	620-1 572 (600-1)	720-1 672 (700-1)		NA