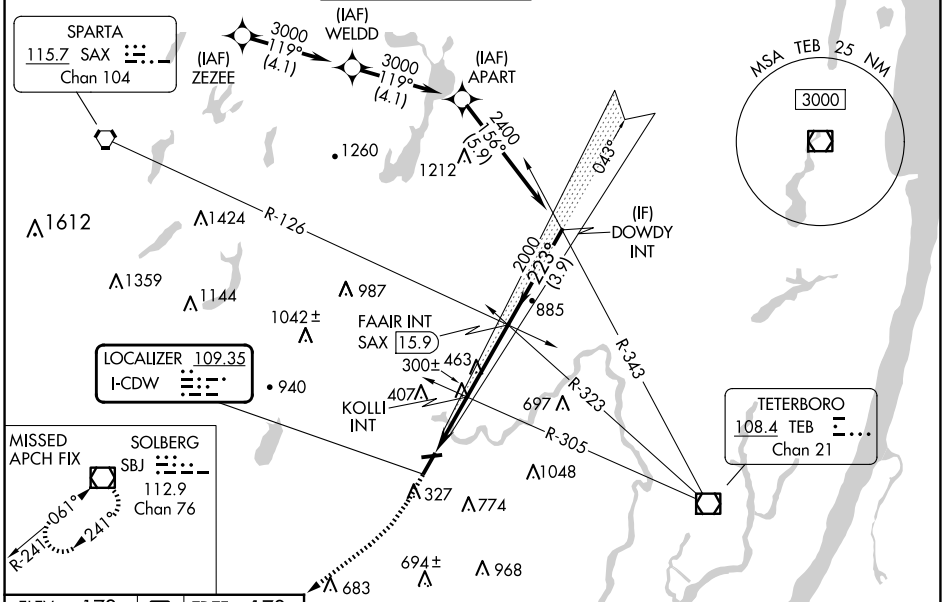


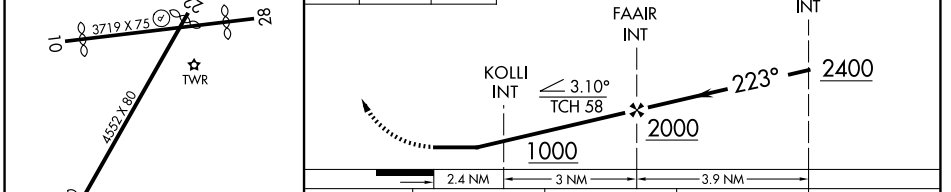
LOC I-CDW	APP CRS	Rwy Ldg	<b>4042</b>
<b>109.35</b>	<b>223°</b>	TDZE	<b>172</b>
		Apt Elev	<b>172</b>

**LOC RWY 22**  
ESSEX COUNTY (CDW)

Aircraft not GPS equipped - RADAR required for procedure entry.				MISSED APPROACH: Climb to 600 then climbing right turn to 2200 direct SBJ VOR/DME and hold.	
⚠ NA Rwy 22 helicopter visibility required below 1 SM NA. When local altimeter setting not received, use Newark altimeter setting and increase all MDA 60 feet and S-22 Cat A and Circling Cat C visibility ¼ SM. KOLLI INT minimums: increase all MDA 60 feet and increase S-22 Cats C/D and Circling Cats A and C visibility ¼ SM. Circling Rwy 10, 28 NA at night.					
ATIS	NEWARK APP CON	CALDWELL TOWER ★	GND CON	CLNC DEL	UNICOM
<b>135.5</b>	<b>127.6 379.9</b>	<b>119.8 (CTAF)</b>	<b>121.9</b>	<b>121.1</b>	<b>122.95</b>



ELEV 172	<b>D</b>	TDZE 172	600	2200	SBJ	VGSI and descent angles not coincident (VGSI Angle 3.00/TCH 42).



CATEGORY	A	B	C	D
S-LOC 22	1000-1 828 (900-1)	1000-1¼ 828 (900-1¼)	1000-2½	828 (900-2½)
<b>C</b> CIRCLING	1000-1¼ 828 (900-1¼)	1040-1¼ 868 (900-1¼)	1100-2¾ 928 (1000-2¾)	1400-3 1228 (1300-3)
KOLLI INT MINIMUMS				
S-LOC 22	560-1	388 (400-1)	560-1½	388 (400-1½)
<b>C</b> CIRCLING	960-1 788 (800-1)	1040-1¼ 868 (900-1¼)	1100-2¾ 928 (1000-2¾)	1400-3 1228 (1300-3)

REIL Rwy 22					
MIRL Rwy 10-28					
HIRL Rwy 4-22					
FAF to MAP 5.4 NM					
Knots	60	90	120	150	180
Min:Sec	5:24	3:36	2:42	2:10	1:48

NE-2, 16 APR 2026 to 14 MAY 2026

NE-2, 16 APR 2026 to 14 MAY 2026