

WAAS CH 97539 W29A	APP CRS 286°	Rwy Idg TDZE Apt Elev	5502 1419 1419
--	------------------------	-----------------------------	---

RNAV (GPS) RWY 29

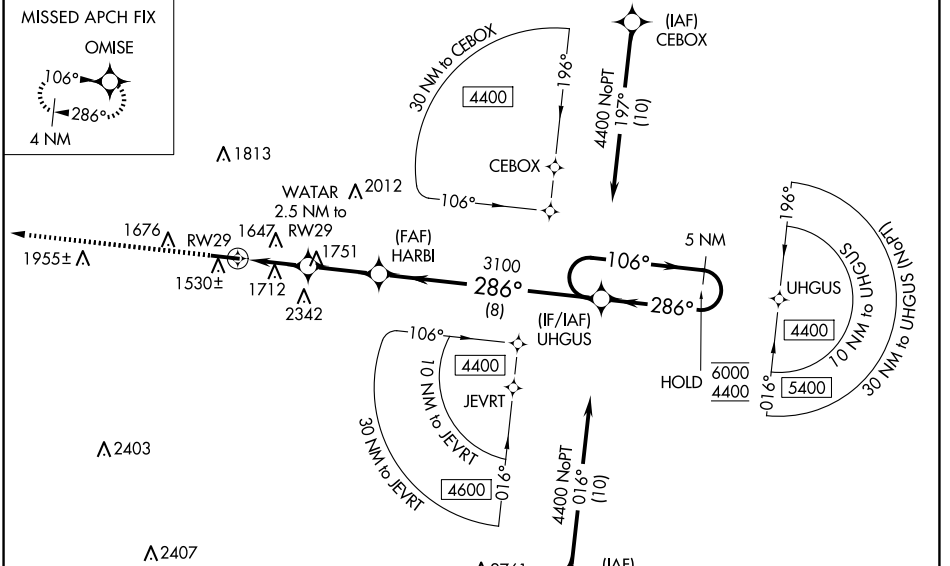
INDIANA COUNTY/JIMMY STEWART FLD (IDI)

RNP APCH - GPS

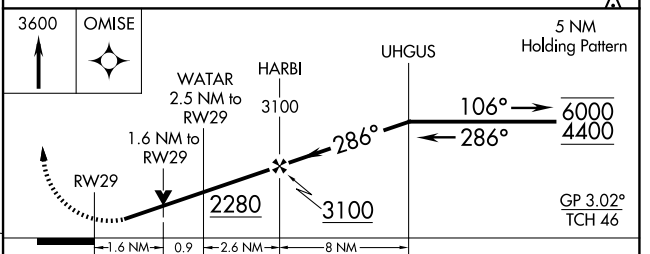
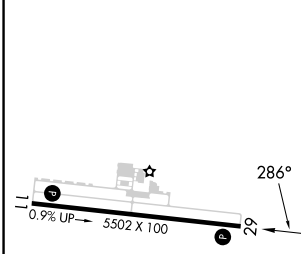
▼ Baro-VNAV and VDP NA when using Allegheny County altimeter setting. For uncompensated Baro-VNAV systems, LNAV/VNAV NA below -17°C or above 54°C. Rwy 29 helicopter visibility reduction below 3/4 SM NA. When local altimeter setting not received, use Allegheny County altimeter setting and increase LPV DA to 1874 feet and all visibilities 3/4 SM. Increase LNAV/VNAV DA to 2099 feet and all visibilities 1/4 SM. Increase all MDAs 120 feet and LNAV visibility Cat C/D 3/4 SM, and Circling visibility Cat A/B 1/4 SM.

MISSED APPROACH:
Climb to 3600 direct OMISE and hold.

AWOS-3 126.625	JOHNSTOWN APP CON * 121.2 299.2	UNICOM 122.8 (CTAF) 0
--------------------------	---	---------------------------------



ELEV 1419	TDZE 1419
-----------	-----------



CATEGORY	A	B	C	D
LPV DA		1755-1	336 (400-1)	
LNAV/VNAV DA		1980-1 1/2	561 (600-1 1/2)	
LNAV MDA	1980-1	561 (600-1)	1980-1 1/2	561 (600-1 1/2)
CIRCLING	2120-1 701 (800-1)	2180-1 761 (800-1)	2660-3	1241 (1300-3)

RNAV (GPS) RWY 29

NE-4, 16 APR 2026 to 14 MAY 2026

NE-4, 16 APR 2026 to 14 MAY 2026