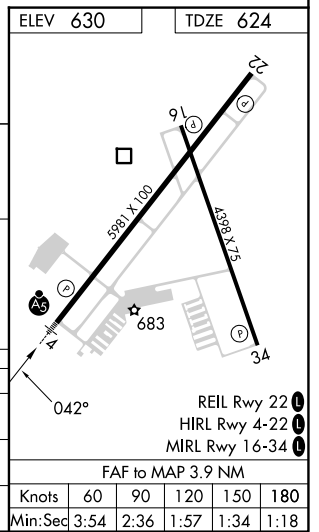
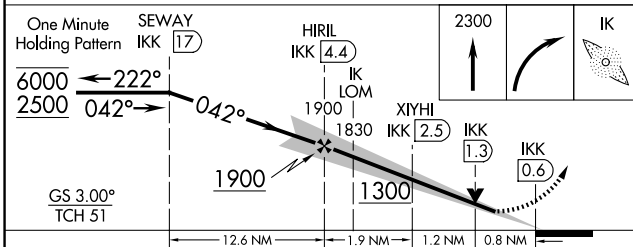
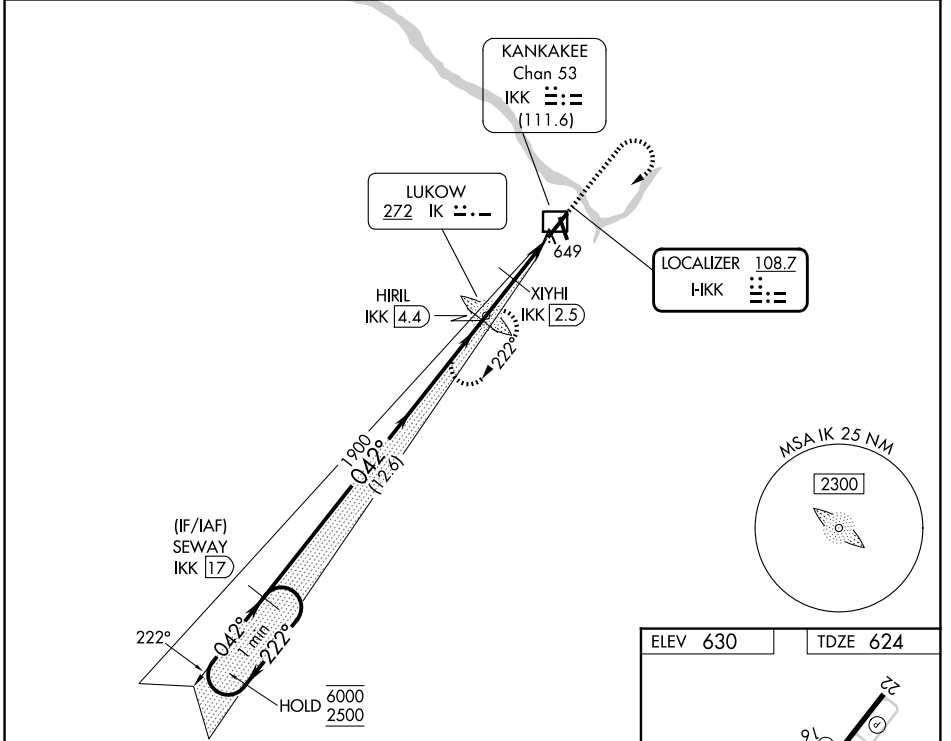


LOC I-IKK 108.7	APP CRS 042°	Rwy Ldg TDZE Apt Elev	5981 624 630
---------------------------	------------------------	-----------------------------	---

ILS or LOC RWY 4

GREATER KANKAKEE (IKK)

RADAR required for procedure entry. DME required. ADF required.		MALSR	MISSED APPROACH: Climb to 2300 then right turn direct LUKOW LOM and hold.
<p>⚠️ NA Circling to Rwy 16, 34 NA at night. DME from IKK DME. DME use requires simultaneous reception of H-KK and IKK DME. For inop ALS, increase S-LOC 4 Cat C/D visibility to ½ SM. Autopilot coupled approach NA below 988 feet.</p>			
AWOS-3 128.475	CHICAGO CENTER 132.5 284.7	UNICOM 123.0 (CTAF) 0	



CATEGORY	A	B	C	D
S-ILS 4		824-½	200 (200-½)	
S-LOC 4		920-½	296 (300-½)	
CIRCLING	1080-1 450 (500-1)	1100-1 470 (500-1)	1140-1½ 510 (600-1½)	1340-2¼ 710 (800-2¼)

EC-3, 16 APR 2026 to 14 MAY 2026

EC-3, 16 APR 2026 to 14 MAY 2026