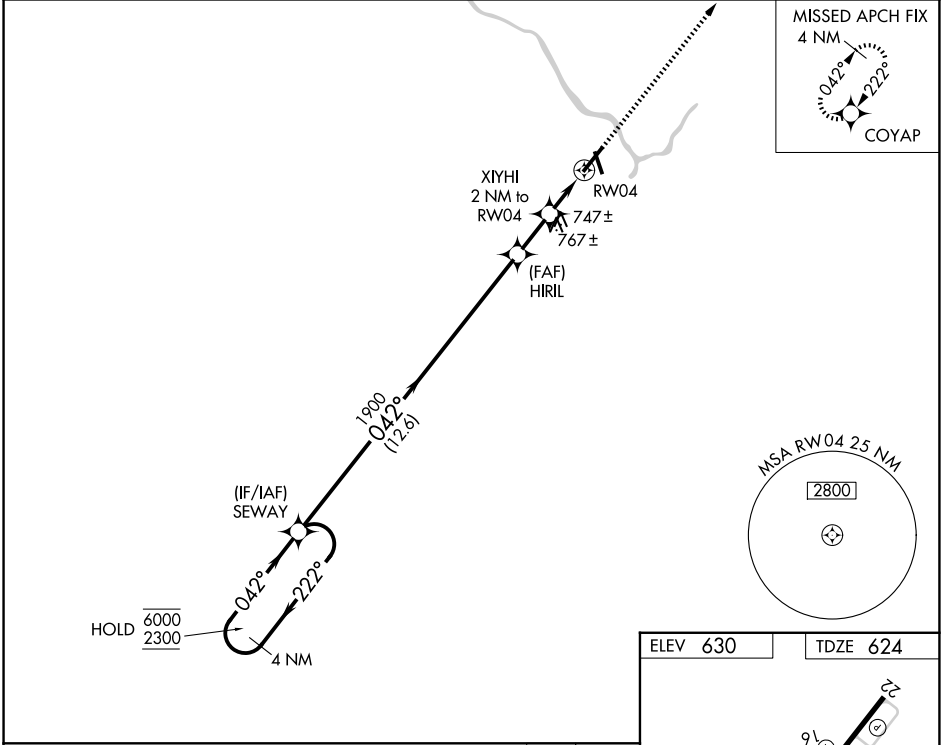


WAAS CH 42799 W04A	APP CRS 042°	Rwy Ldg TDZE Apt Elev	5981 624 630
--	------------------------	-----------------------------	---

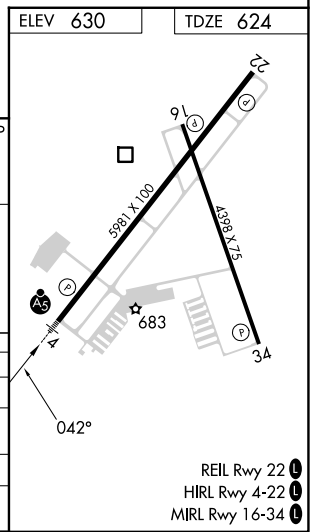
RNAV (GPS) RWY 4

GREATER KANKAKEE (IKK)

RNP APCH - GPS.		MALSRL	MISSED APPROACH: Climb to 2300 direct COYAP and hold.
<p>▽ Circling Rwy 16, 34 NA at night. For uncompensated Baro-VNAV systems, LNAV/VNAV NA below -16°C or above 54°C. For inop ALS, increase LNAV Cats C/D to 1 SM.</p> <p>▲</p>			
AWOS-3 128.475	CHICAGO CENTER 132.5 284.7	UNICOM 123.0 (CTAF) 0	



4 NM Holding Pattern		SEWAY		HIRL		XIYHI 2 NM to RW04		RW04	
6000 ← 222°		2300 → 042°		1900		1300		1 NM to RW04	
GP 3.00° TCH 51		12.6 NM		1.9 NM		1 NM		1 NM	
CATEGORY	A	B		C		D			
LPV DA		824-1/2		200 (200-1/2)					
LNAV/VNAV DA		1010-5/8		386 (400-5/8)					
LNAV MDA	1000-1/2	376 (400-1/2)		1000-5/8		376 (400-5/8)			
CIRCLING	1080-1 450 (500-1)	1100-1 470 (500-1)		1140-1 1/2 510 (600-1 1/2)		1340-2 1/4 710 (800-2 1/4)			



- REIL Rwy 22 0
- HIRL Rwy 4-22 0
- MIRL Rwy 16-34 0

EC-3, 16 APR 2026 to 14 MAY 2026

EC-3, 16 APR 2026 to 14 MAY 2026