

WAAS CH <b>58130</b> <b>W10A</b>	APP CRS <b>099°</b>	Rwy Idg TDZE <b>1892</b> Apt Elev <b>1892</b>	<b>3597</b>
----------------------------------------	------------------------	-----------------------------------------------------	-------------

# RNAV (GPS) RWY 10

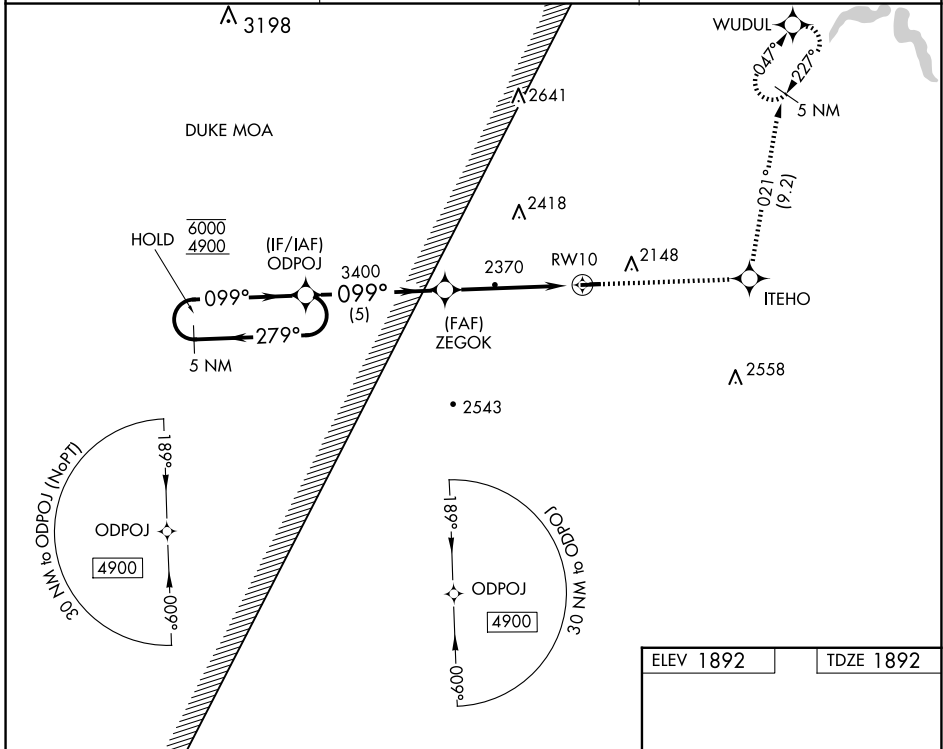
GRAND CANYON RGNL (N38)

RNP APCH.

**▼** Circling NA to Rwys 11 and 29. Procedure NA at night.  
**▲** Rwy 10 helicopter visibility reduction below 1 SM NA.

MISSED APPROACH: Climb to 4500 direct ITEHO and on track 021° to WUDUL and hold.

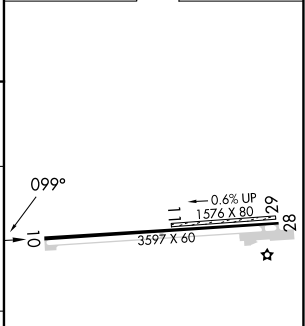
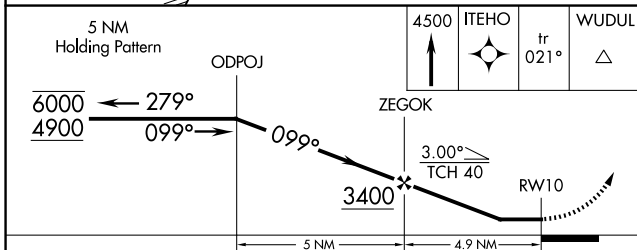
AWOS-3PT <b>120.925</b>	ELMIRA APP CON ★ <b>128.425 257.8</b>	UNICOM <b>122.8</b> (CTAF) <b>0</b>
----------------------------	------------------------------------------	----------------------------------------



NE-4, 16 APR 2026 to 14 MAY 2026

NE-4, 16 APR 2026 to 14 MAY 2026

ELEV 1892	TDZE 1892
-----------	-----------



CATEGORY	A	B	C	D
LP MDA	2760-1 868 (900-1)	2760-1¼ 868 (900-1¼)	2760-2½ 868 (900-2½)	NA
LNAV MDA	2760-1 868 (900-1)	2760-1¼ 868 (900-1¼)	2760-2½ 868 (900-2½)	NA
<b>C</b> CIRCLING	2760-1¼ 868 (900-1¼)	2760-2½ 868 (900-2½)	2760-2½ 868 (900-2½)	NA

MIRL Rwy 10-28 **0**  
 REIL Rwy 28 **0**