

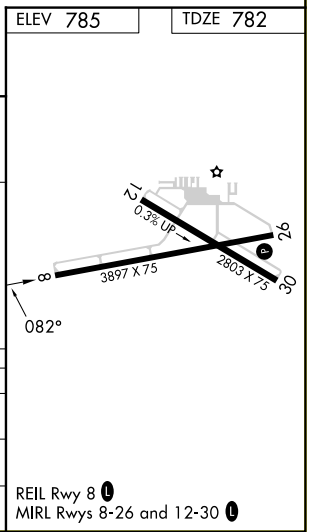
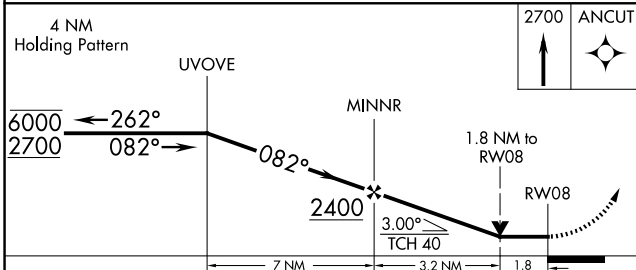
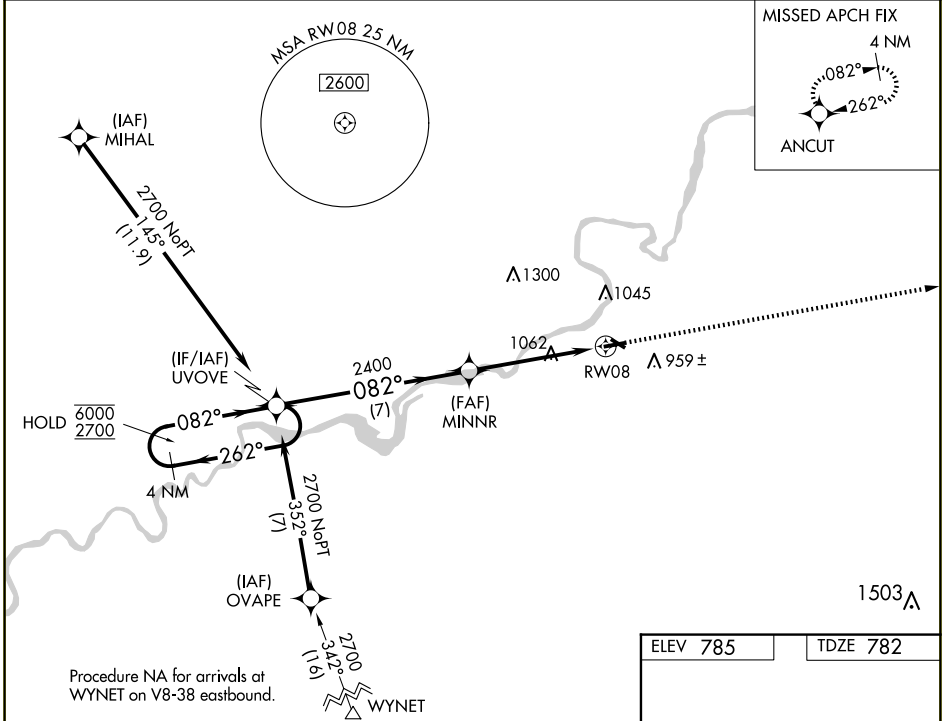
WAAS CH 42821 W08A	APP CRS 082°	Rwy Idg TDZE Apt Elev	3897 782 785
--	------------------------	-----------------------------	---

RNAV (GPS) RWY 8

DIXON MUNI-CHARLES R WALGREEN FLD (C73)

RNP APCH - GPS.	<p>▼ Rwy 8 helicopter visibility reduction below 3/4 SM NA. When local altimeter setting not received, use Rochelle altimeter setting and increase all MDAs 40 feet and Circling visibility Cat C 1/4 SM. VDP NA when using Rochelle altimeter setting.</p> <p>▲ NA</p>	MISSED APPROACH: Climb to 2700 direct ANCUT and hold.
-----------------	---	---

AWOS-AV 118.575	ROCKFORD APP CON 126.0 327.0	UNICOM 123.05 (CTAF) 0
---------------------------	--	----------------------------------



CATEGORY	A	B	C	D
LP MDA	1380-1	598 (600-1)	1380-1 3/4 598 (600-1 3/4)	NA
LNAV MDA	1380-1	598 (600-1)	1380-1 3/4 598 (600-1 3/4)	NA
CIRCLING	1380-1 595 (600-1)	1400-1 615 (700-1)	1420-1 3/4 635 (700-1 3/4)	NA

EC-3, 16 APR 2026 to 14 MAY 2026

EC-3, 16 APR 2026 to 14 MAY 2026