

LOC I-OUF 111.5	APP CRS 274°	Rwy Ldg TDZE Apt Elev	6500 778 778
---------------------------	------------------------	-----------------------------	---

ILS or LOC RWY 27

ELKHART MUNI (EKM)

RNP APCH - GPS.

RADAR required for procedure entry.

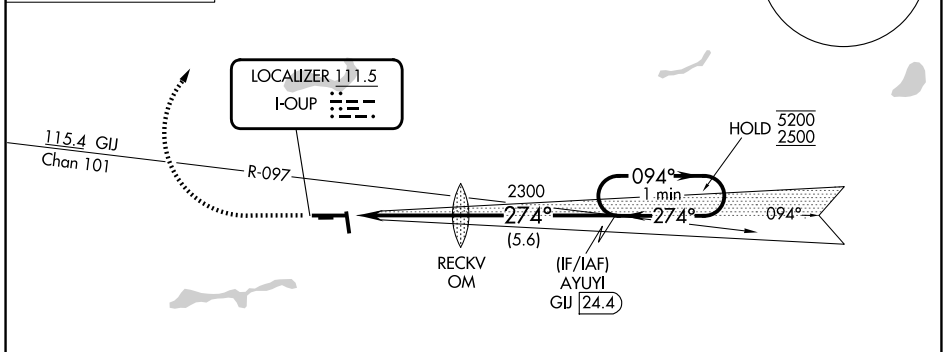
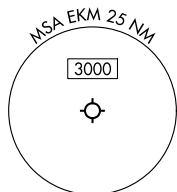
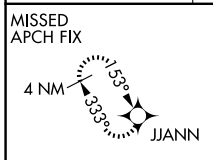
∇ Circling NA to Rwys 8 and 26. Rwy 27 helicopter visibility reduction below RVR 4000 NA.

⚠ Circling Rwy 18 and 36 NA at night. When local altimeter setting not received, use SBN altimeter setting and increase S-ILS 27 DA to 1100 feet, increase all MDAs 40 feet, and S-LOC 27 visibility Cat C/D to RVR 5500, and Circling visibility Cat D ¼ SM. For inop ALS, increase S-ILS 27 all Cats visibility to RVR 4500 and S-LOC 27 Cat A/B visibility to 5500 and Cat C/D visibility to 1 ½ SM. For inop ALS when using SBN, increase S-LOC 27 Cat A/B visibility to RVR 5500, and Cat C/D visibility to 1 ½ SM.

MALSR

MISSED APPROACH:
Climb to 1500 then climbing right turn to 4000 direct JJANN and hold.

AWOS-3 124.475	SOUTH BEND APP CON ★ 118.55 257.8	ELKHART TOWER ★ 119.5 (CTAF) 0	GND CON 121.8	UNICOM 122.95
--------------------------	---	--	-------------------------	-------------------------



ELEV 778 [D] TDZE 778

MIRL Rwy 18-36 [D]
HIRL Rwy 9-27 [D]
REIL Rwys 9, 18 and 36 [D]

FAF to MAP 4.2 NM

Knots	60	90	120	150	180
Min:Sec	4:12	2:48	2:06	1:41	1:24

EC-2, 16 APR 2026 to 14 MAY 2026

EC-2, 16 APR 2026 to 14 MAY 2026