

|             |          |             |
|-------------|----------|-------------|
| APP CRS     | Rwy Ldg  | <b>3999</b> |
| <b>176°</b> | TDZE     | <b>777</b>  |
|             | Apt Elev | <b>778</b>  |

# RNAV (GPS) RWY 18

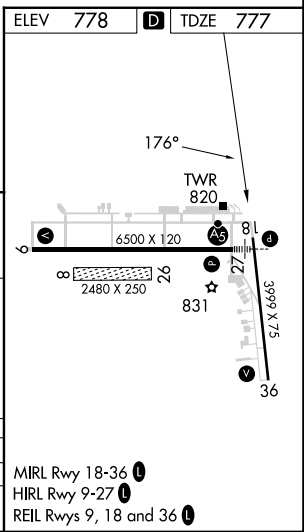
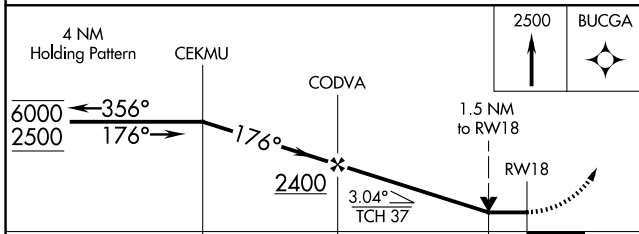
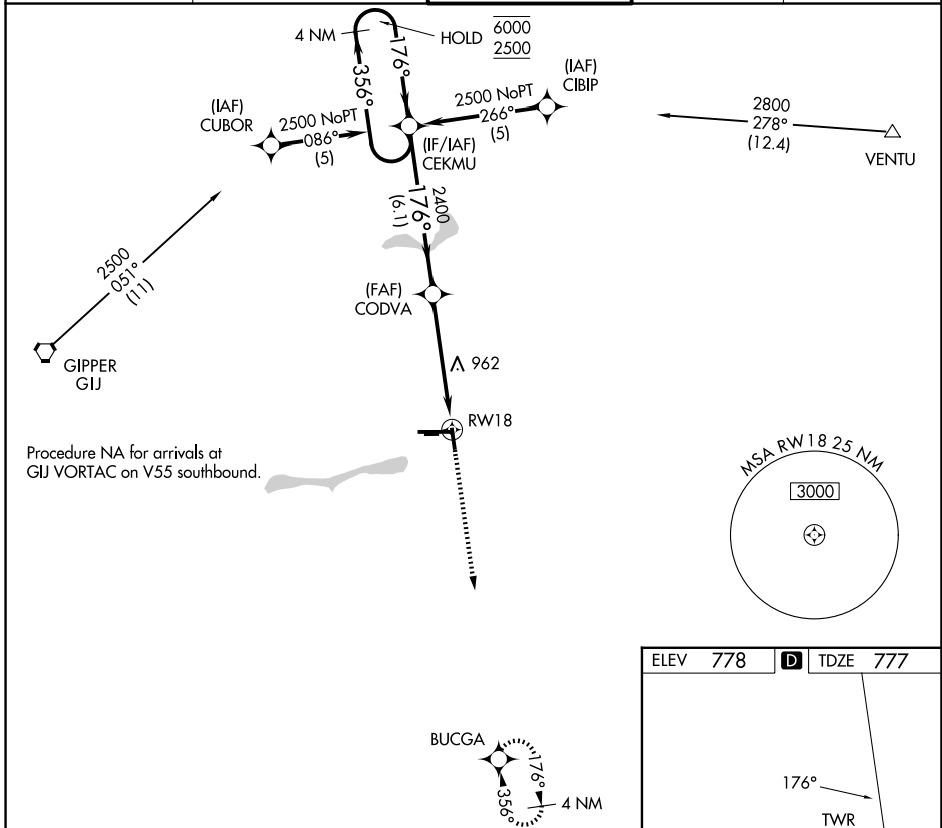
ELKHART MUNI (EKM)

RNP APCH - GPS

**⚠** Circling NA to Rwy 8 and 26. Circling to Rwy 36 NA at night. Rwy 18 helicopter visibility reduction below 3/4 SM NA. VDP NA with South Bend altimeter setting. When local altimeter setting not received, use South Bend altimeter setting and increase all MDAs 40 feet.

**⚠** MISSED APPROACH: Climb to 2500 direct BUCGA and hold.

|                          |   |   |                         |                         |
|--------------------------|---|---|-------------------------|-------------------------|
| AWOS-3<br><b>124.475</b> | SOUTH BEND APP CON ★<br><b>118.55 257.8</b> | ELKHART TOWER ★<br><b>119.5 (CTAF)</b> <b>0</b> | GND CON<br><b>121.8</b> | UNICOM<br><b>122.95</b> |
|--------------------------|---|---|-------------------------|-------------------------|



| CATEGORY | A                     | B                     | C  | D  |
|----------|-----------------------|-----------------------|--|--|
| LNVA MDA | 1280-1                | 503 (600-1)           | 1280-1 <sup>3</sup> / <sub>8</sub>   | 503 (600-1 <sup>3</sup> / <sub>8</sub> )                                       |
| CIRCLING | 1280-1<br>502 (600-1) | 1300-1<br>522 (600-1) | 1380-1 <sup>3</sup> / <sub>4</sub><br>602 (700-1 <sup>3</sup> / <sub>4</sub> ) | 1580-2 <sup>1</sup> / <sub>2</sub><br>802 (900-2 <sup>1</sup> / <sub>2</sub> ) |

MIRL Rwy 18-36 **0**  
HIRL Rwy 9-27 **0**  
REIL Rwy 9, 18 and 36 **0**

EC-2, 16 APR 2026 to 14 MAY 2026

EC-2, 16 APR 2026 to 14 MAY 2026