

WAAS CH 50107 W27A	APP CRS 274°	Rwy Ldg TDZE Apt Elev	6500 778 778
--	------------------------	-----------------------------	---

RNAV (GPS) RWY 27

ELKHART MUNI (EKM)

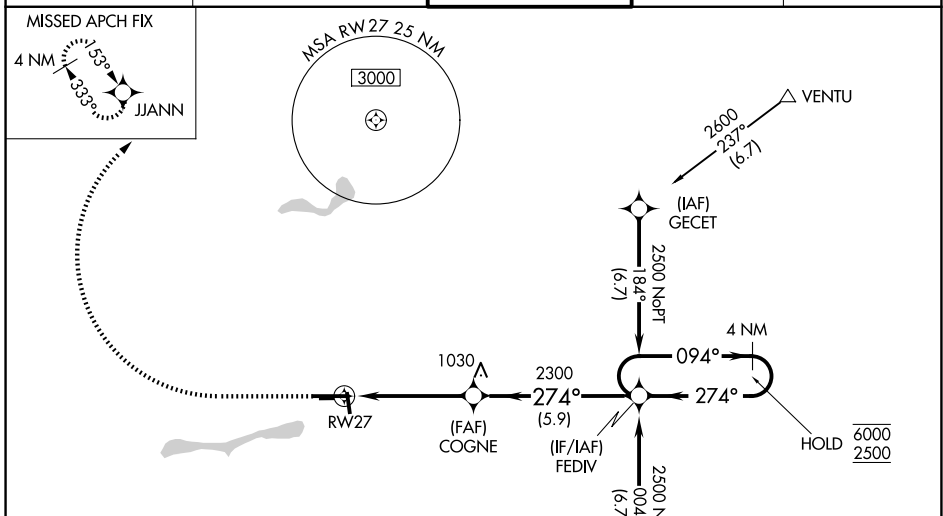
RNP APCH - GPS.

▼ Baro-VNAV and VDP NA when using SBN altimeter setting. Circling NA to Rwy 8 and 26.
▲ For uncompensated Baro-VNAV systems, LNAV/VNAV NA below -16°C or above 54°C. Rwy 27 helicopter visibility reduction below RVR 4000 NA. Circling Rwy 36 NA at night. When local altimeter setting not received, use SBN altimeter setting: increase LPV DA to 1105 feet; increase LNAV/VNAV DA to 1255 feet and all visibilities to RVR 5000; increase all MDA 40 feet and LNAV visibility Cat C/D to RVR 5500 and Circling Cat D visibility ½ SM. For inop ALS, increase LPV all Cats visibility to RVR 4500, LNAV Cat A/B visibility RVR 5500 and Cat C/D to 1 ½ SM. For inop ALS when using SBN altimeter setting, increase LNAV/VNAV all Cats visibility to 1 ½ SM and LNAV Cat A/B to RVR 5500.

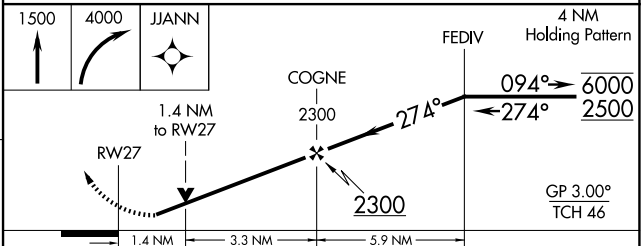
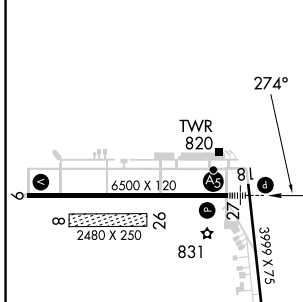


MISSED APPROACH:
Climb to 1500 then climbing right turn to 4000 to JJANN and hold.

AWOS-3 124.475	SOUTH BEND APP CON ★ 118.55 257.8	ELKHART TOWER ★ 119.5 (CTAF) 0	GND CON 121.8	UNICOM 122.95
--------------------------	---	--	-------------------------	-------------------------



ELEV 778	D	TDZE 778
----------	----------	----------



CATEGORY	A	B	C	D
LPV DA		1071/40	293 (300-¾)	
LNAV/VNAV DA		1221/45	443 (500-7/8)	
LNAV MDA	1260/40	482 (500-¾)	1260/50	482 (500-1)
CIRCLING	1260-1 482 (500-1)	1300-1 522 (600-1)	1380-1¾ 602 (700-1¾)	1580-2½ 802 (900-2½)

MIRL Rwy 18-36 **Ⓛ**
 HIRL Rwy 9-27 **Ⓛ**
 REIL Rwy 9, 18 and 36 **Ⓛ**

EC-2, 16 APR 2026 to 14 MAY 2026

EC-2, 16 APR 2026 to 14 MAY 2026