

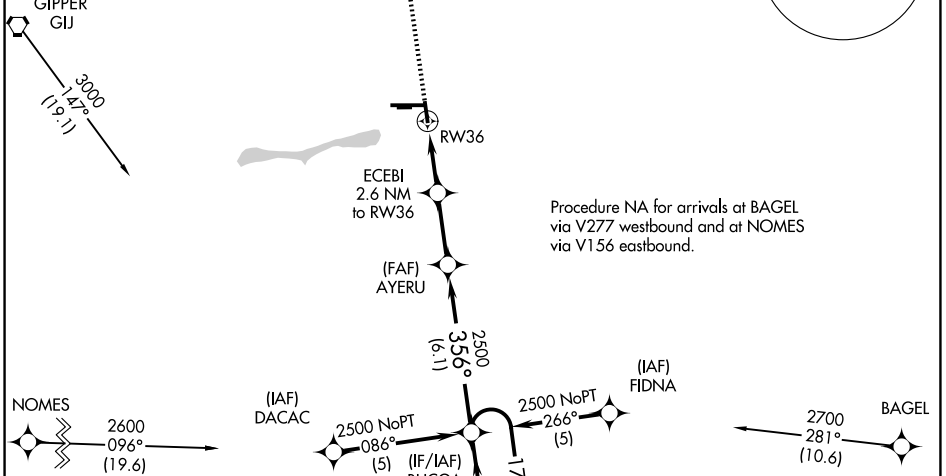
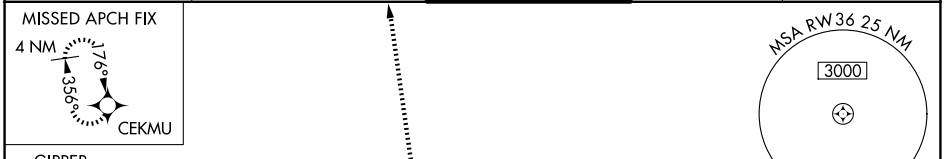
APP CRS	Rwy Ldg	3999
356°	TDZE	776
	Apt Elev	778

RNAV (GPS) RWY 36

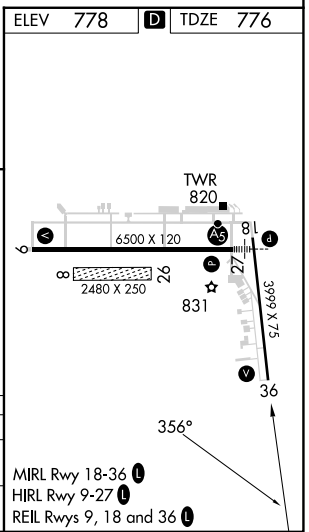
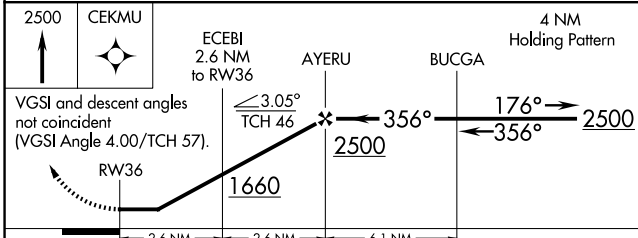
ELKHART MUNI (EKM)

RNP APCH.	When local altimeter setting not received, use South Bend altimeter setting and increase all MDA 40 feet. Straight-in and Circling Rwy 36 NA at night. Rwy 36 helicopter visibility reduction below 1 SM NA. Circling NA to Rwys 8 and 26.	MISSED APPROACH: Climb to 2500 direct CEKMU and hold.
-----------	--	--

AWOS-3 124.475	SOUTH BEND APP CON ★ 118.55 257.8	ELKHART TOWER ★ 119.5 (CTAF) 0	GND CON 121.8	UNICOM 122.95
--------------------------	---	--	-------------------------	-------------------------



ELEV 778	D TDZE 776
----------	-------------------



CATEGORY	A	B	C	D
LNVA MDA	1220-1	444 (500-1)	1220-1¼ 444 (500-1¼)	1220-1½ 444 (500-1½)
CIRCLING	1240-1 462 (500-1)	1300-1 522 (600-1)	1380-1¾ 602 (700-1¾)	1580-2½ 802 (900-2½)

EC-2, 16 APR 2026 to 14 MAY 2026

EC-2, 16 APR 2026 to 14 MAY 2026