

APP CRS	Rwy Ldg	<b>6500</b>
<b>094°</b>	TDZE	<b>777</b>
	Apt Elev	<b>778</b>

# RNAV (GPS) RWY 9

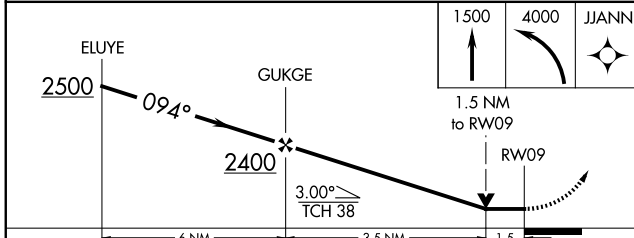
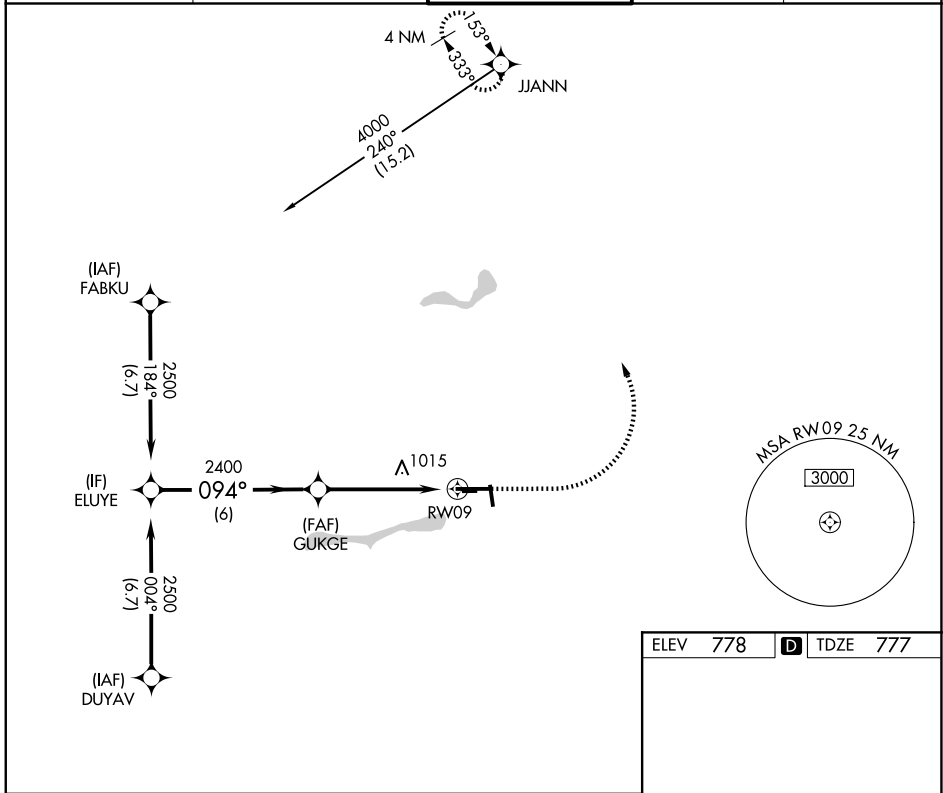
ELKHART MUNI (EKM)

RNP APCH - GPS.

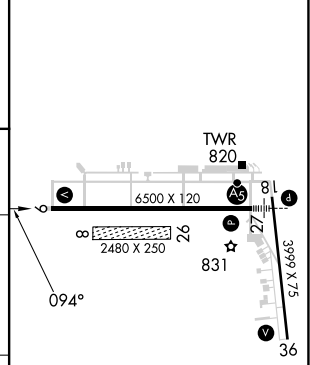
**⚠** Circling NA to Rws 8 and 26. Circling Rwy 36 NA at night. Rwy 9 helicopter visibility reduction below 3/4 SM NA. VDP NA when using SBN altimeter setting. When local altimeter setting not received, use SBN altimeter setting; increase all MDAs 40 feet and LNAV visibility Cat C/D 1/4 SM, and Circling visibility Cat D 1/4 SM.

**⚠** MISSED APPROACH: Climb to 1500 then climbing left turn to 4000 direct JJANN and hold.

AWOS-3 <b>124.475</b>	SOUTH BEND APP CON ★ <b>118.55 257.8</b>	ELKHART TOWER ★ <b>119.5 (CTAF) 0</b>	GND CON <b>121.8</b>	UNICOM <b>122.95</b>
--------------------------	---	--	-------------------------	-------------------------



ELEV 778	<b>D</b> TDZE 777
----------	-------------------



CATEGORY	A	B	C	D
LNAV MDA	1280-1	503 (600-1)	1280-1 3/8	503 (600-1 3/8)
CIRCLING	1280-1 502 (600-1)	1300-1 522 (600-1)	1380-1 3/4 602 (700-1 3/4)	1580-2 1/2 802 (900-2 1/2)

MIRL Rwy 18-36 **0**  
 HIRL Rwy 9-27 **0**  
 REIL Rws 9, 18 and 36 **0**

EC-2, 16 APR 2026 to 14 MAY 2026

EC-2, 16 APR 2026 to 14 MAY 2026