

VORTAC GJ 115.4 Chan 101	APP CRS 102°	Rwy Ldg TDZE 777 Apt Elev 778
--	------------------------	---

VOR RWY 9

ELKHART MUNI (EKM)

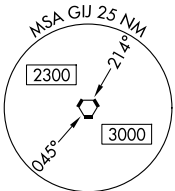
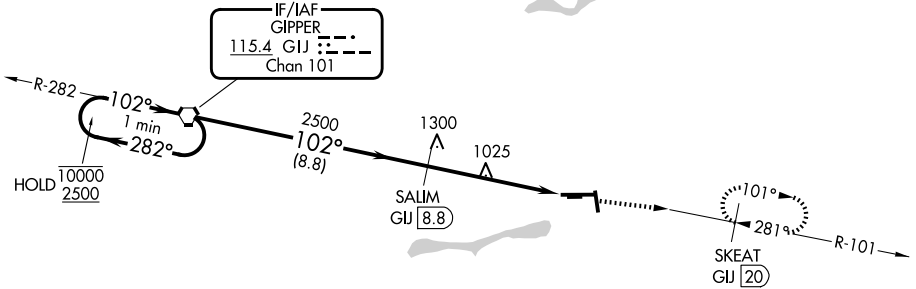
DME required.

⚠ VDP NA when using SBN altimeter setting. Rwy 9 helicopter visibility reduction below ¼ SM NA.
⚠ Circling NA to Rwy 8 and 26. When local altimeter setting not received, use SBN altimeter setting and increase all MDAs 40 feet and S-09 visibility Cat C/D ½ SM, and Circling visibility Cat D ¼ SM. Circling Rwy 18 and 36 NA at night.

MISSED APPROACH:
 Climb to 2500 on GJ
 R-101 to SKEAT/GJ
 20 DME and hold.

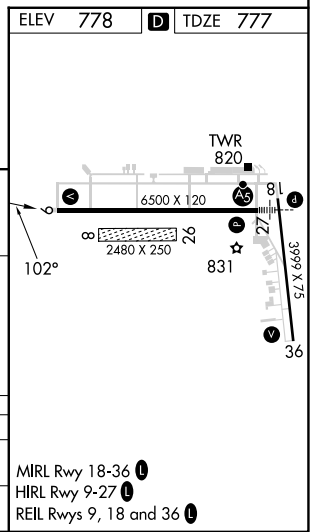
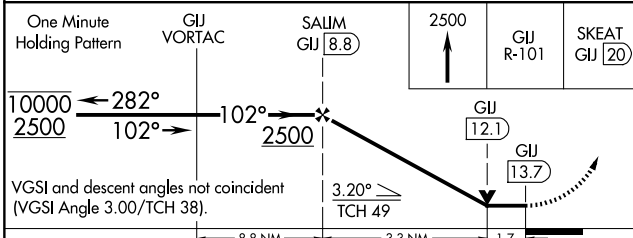
AWOS-3 124.475	SOUTH BEND APP CON ★ 118.55 257.8	ELKHART TOWER ★ 119.5 (CTAF) 0	GND CON 121.8	UNICOM 122.95
--------------------------	---	--	-------------------------	-------------------------

NoPT for arrival on GJ VORTAC
 airway radials 209 CW 310.



EC-2, 16 APR 2026 to 14 MAY 2026

EC-2, 16 APR 2026 to 14 MAY 2026



	A		B		C		D	
One Minute Holding Pattern	GJ VORTAC		SALIM GJ [8.8]		2500		GJ R-101 SKEAT GJ [20]	
Category	A		B		C		D	
S-9	1340-1 563 (600-1)		1340-1 563 (600-1)		1380-1 602 (700-1 3/4)		1580-2 802 (900-2 1/2)	
CIRCLING	1340-1 562 (600-1)							