

LOC/DME I-JYO <b>111.75</b> Chan 54 (Y)	APP CRS <b>171°</b>	Rwy Ldg TDZE Apt Elev	<b>5500</b> <b>383</b> <b>390</b>
---	------------------------	-----------------------------	---

# ILS or LOC RWY 17

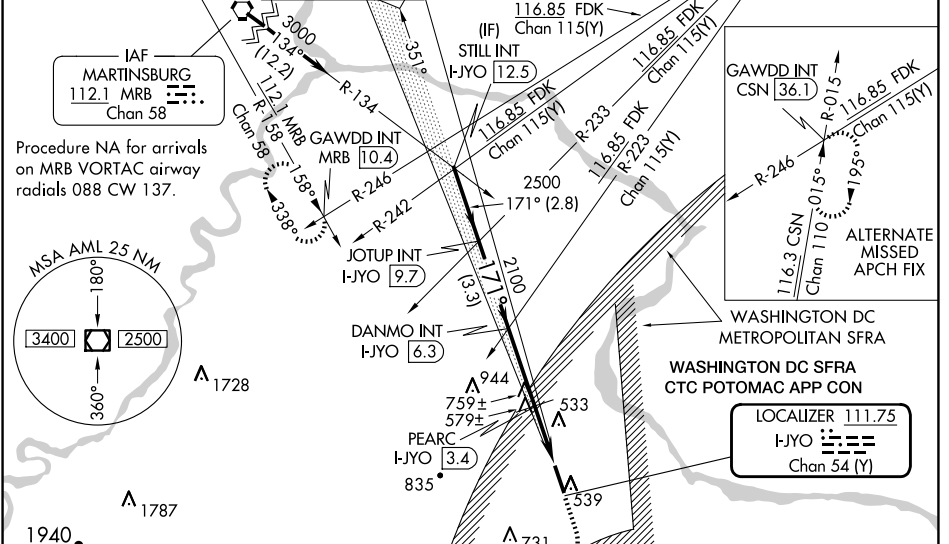
LEESBURG EXEC (JYO)

**NA** Inop table does not apply to S-ILS 17 all Cats and S-LOC 17 Cats C/D. For inop ALS when using Washington Dulles Intl altimeter setting, increase visibility S-ILS 17 Cats A/B to 3/8 SM and inop table does not apply to S-LOC 17 Cats C/D. When local altimeter setting not received, use Washington Dulles Intl altimeter setting: increase S-ILS 17 DA to 665 feet; increase all MDA 40 feet and visibility S-LOC 17 Cat A and Circling Cat C 1/4 SM and PEARC fix minimums S-LOC 17 Cat C/D 1/2 SM and Circling Cat C 1/4 SM. For inop ALS, increase PEARC fix minimums S-LOC 17 Cats C/D visibility to 1/8.

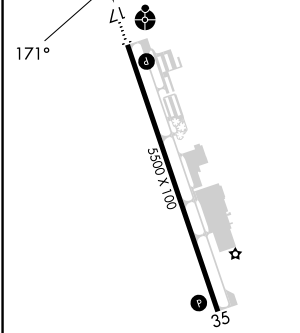
**ODALS**

MISSED APPROACH: Climb to 1200 then climbing right turn to 4000 on heading 340° and MRB VORTAC R-158 to GAWDD INT/MRB 10.4 DME and hold, continue climb-in hold to 4000.

AWOS-3 <b>125.225</b>	POTOMAC <b>125.05</b>	APP CON <b>338.25</b>	LEESBURG TOWER * <b>127.5</b> (CTAF) <b>0</b>	GND CON <b>120.5</b>	CLNC DEL <b>120.5</b>	CLNC DEL <b>118.55</b> (When twr closed)	UNICOM <b>122.975</b>
--------------------------	--------------------------	--------------------------	--	-------------------------	--------------------------	---	--------------------------

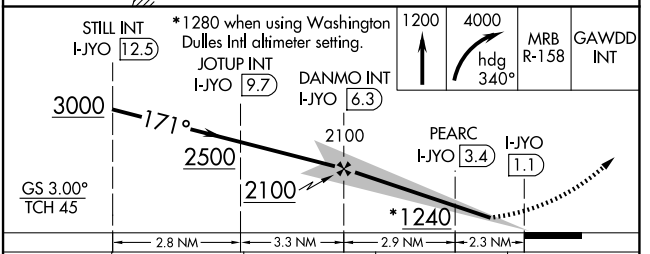


ELEV 390	TDZE 383
----------	----------



REIL Rws 17 and 35 **0**  
HIRL Rwy 17-35 **0**

FAF to MAP 5.3 NM					
Knots	60	90	120	150	180
Min:Sec	5:18	3:32	2:39	2:07	1:46



CATEGORY	A	B	C	D
S-ILS 17		633-3/4	250 (300-3/4)	
S-LOC 17	1240-3/4 857 (900-3/4)	1240-1 857 (900-1)	1240-2 1/2	857 (900-2 1/2)
CIRCLING	1240-1 1/4	850 (900-1 1/4)	1240-2 1/2 850 (900-2 1/2)	1300-3 910 (1000-3)
PEARC FIX MINIMUMS				
S-LOC 17	840-3/4	457 (500-3/4)	840-1 1/8	457 (500-1 1/8)
CIRCLING	860-1	470 (500-1)	1040-1 3/4 650 (700-1 3/4)	1300-3 910 (1000-3)

NE-3, 16 APR 2026 to 14 MAY 2026

NE-3, 16 APR 2026 to 14 MAY 2026