

WAAS CH <b>60902</b> <b>W17A</b>	APP CRS <b>171°</b>	Rwy Idg TDZE Apt Elev	<b>5500</b> <b>383</b> <b>390</b>
--	------------------------	-----------------------------	---

# RNAV (GPS) RWY 17

LEESBURG EXEC (JYO)

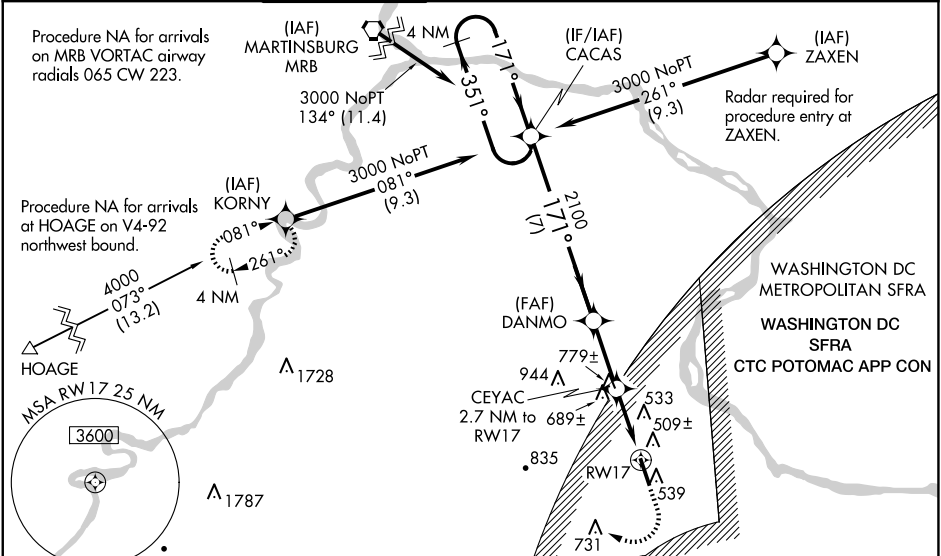
RNP APCH - GPS.

**⚠** For uncompensated Baro-VNAV systems, LNAV/VNAV NA below -15°C or above 41°C.  
**⚠** When local altimeter setting not received, use Washington Dulles Intl altimeter setting:  
 increase LPV DA to 665 feet; increase LNAV/VNAV DA to 757 feet and increase all visibilities 1/8 SM; increase all MDA 40 feet and visibility LNAV Cat C/D and Circling Cat C 1/4 SM.  
 Inop table does not apply to LPV all Cats. For inop ALS when using Washington Dulles Intl altimeter setting, increase visibility LPV Cats A/B to 1/8 SM and inop table does not apply to LNAV/VNAV all Cats. Baro-VNAV NA when using Washington Dulles Intl altimeter setting.  
 For inop ALS, increase visibility LNAV/VNAV Cats A/B to 1 and LNAV Cats C/D to 1/8.

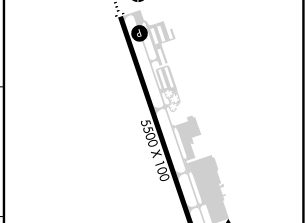
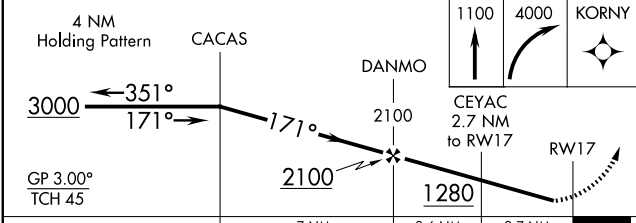
ODALS

MISSED APPROACH:  
Climb to 1100 then climbing right turn to 4000 direct KORNYY and hold.

AWOS-3 <b>125.225</b>	POTOMAC APP CON <b>125.05 338.25</b>	LEESBURG TOWER ★ <b>127.5</b> (CTAF) <b>0</b>	GND CON <b>120.5</b>	CLNC DEL <b>120.5</b>	CLNC DEL <b>118.55</b> (When twr closed)	UNICOM <b>122.975</b>
--------------------------	---	--	-------------------------	--------------------------	---	--------------------------



ELEV 390	TDZE 383
----------	----------



CATEGORY	A	B	C	D
LPV DA		633-3/4	250 (300-3/4)	
LNAV/VNAV DA		725-7/8	342 (400-7/8)	
LNAV MDA	940-3/4	557 (600-3/4)	940-13/8	557 (600-13/8)
CIRCLING	940-1	550 (600-1)	1040-13/4	1300-3
			650 (700-13/4)	910 (1000-3)

REIL Rwy 17 and 35 **0**  
 HIRL Rwy 17-35 **0**

NE-3, 16 APR 2026 to 14 MAY 2026

NE-3, 16 APR 2026 to 14 MAY 2026