

APP CRS 263°	Rwy Ldg TDZE Apt Elev	5001 3689 3706
------------------------	-----------------------------	---

RNAV (GPS) RWY 26

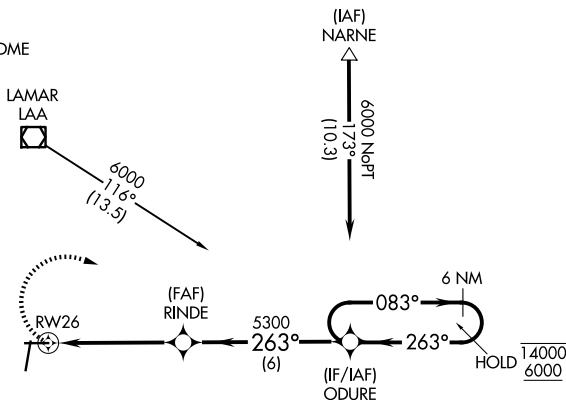
SOUTHEAST COLORADO RGNL (L.A.A)

RNP APCH.	MISSED APPROACH: Climbing right turn to 6000 direct ODURE and hold.
Rwy 26 helicopter visibility reduction below 3/4 SM NA.	

ASOS 135,625	DENVER CENTER 133.4 377.175	UNICOM 122.8 (CTAF) 0
------------------------	---------------------------------------	---------------------------------

Procedure NA for arrival on LAA VOR/DME
airway radials 048 CW 118.

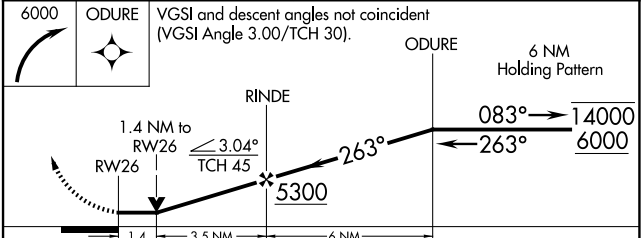
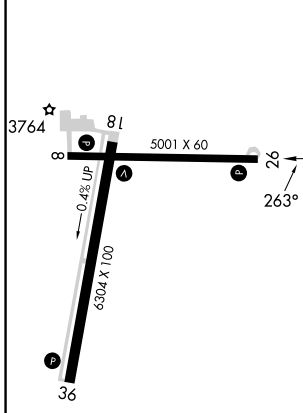
Procedure NA for arrivals at NARNE
on V244 northeast bound.



SW-1, 16 APR 2026 to 14 MAY 2026

SW-1, 16 APR 2026 to 14 MAY 2026

ELEV 3706	TDZE 3689
-----------	-----------



REIL Rwy 8, 26, 18, and 36			
MIRL Rwy 8-26 and 18-36			
CATEGORY	A	B	C
LNAV MDA	4180-1	491 (500-1)	4180-1 3/8 491 (500-1 3/8)
			4180-1 1/2 491 (500-1 1/2)