

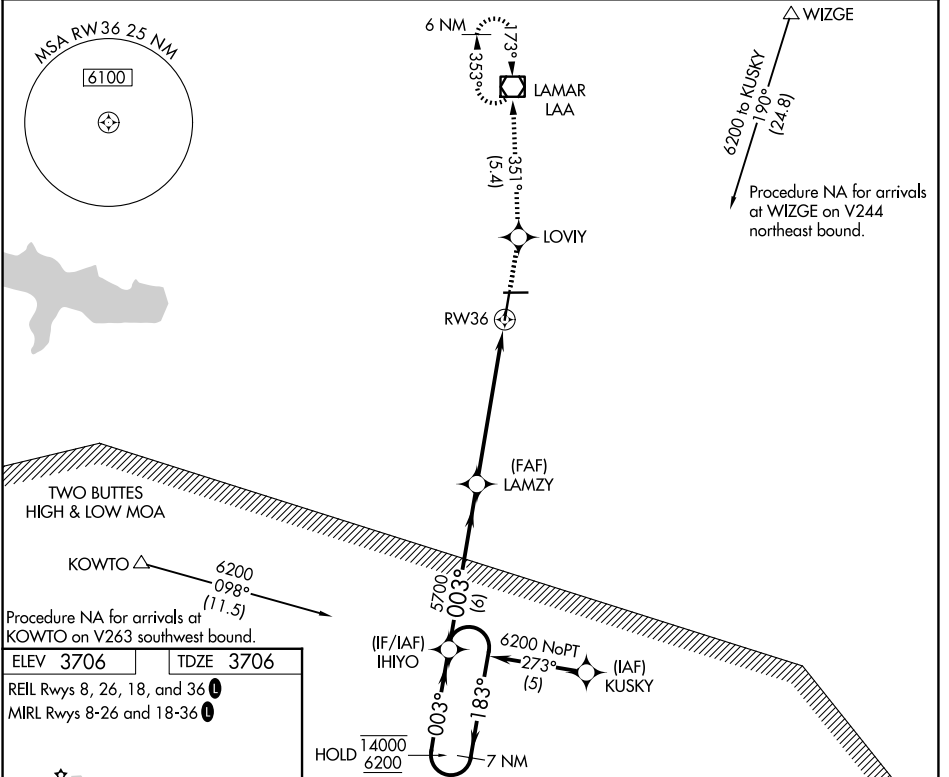
WAAS CH 99400 W36A	APP CRS 003°	Rwy Ldg TDZE Apt Elev	6304 3706 3706
--	------------------------	-----------------------------	---

RNAV (GPS) RWY 36

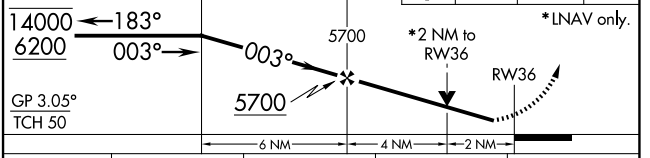
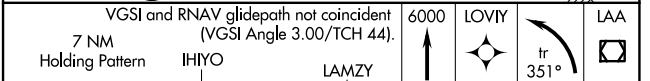
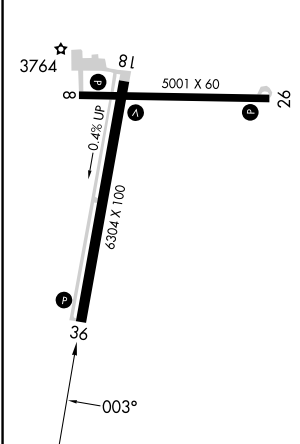
SOUTHEAST COLORADO RGNL (L.A.A)

RNP APCH.	MISSED APPROACH: Climb to 6000 direct LOVIY and left turn on track 351° to LAA VOR/DME and hold.
<p>▼ Rwy 36 helicopter visibility reduction below 3/4 SM NA. For uncompensated</p> <p>▲ Baro-VNAV systems, LNAV/VNAV NA below -22°C or above 54°C.</p>	

ASOS 135.625	DENVER CENTER 133.4 377.175	UNICOM 122.8 (CTAF)
------------------------	---------------------------------------	-------------------------------



ELEV 3706	TDZE 3706
REIL Rwy 8, 26, 18, and 36	
MIRL Rwy 8-26 and 18-36	



CATEGORY	A	B	C	D
LPV DA		3956-1	250 (300-1)	
LNAV/VNAV DA		4250-2	544 (600-2)	
LNAV MDA	4400-1	694 (700-1)	4400-2 694 (700-2)	4400-2¼ 694 (700-2¼)

SW-1, 16 APR 2026 to 14 MAY 2026

SW-1, 16 APR 2026 to 14 MAY 2026