

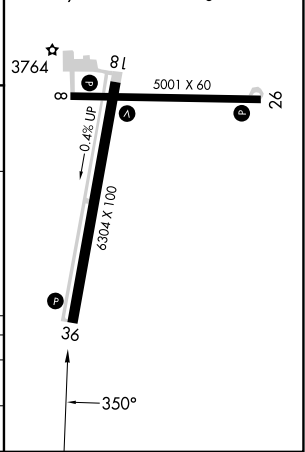
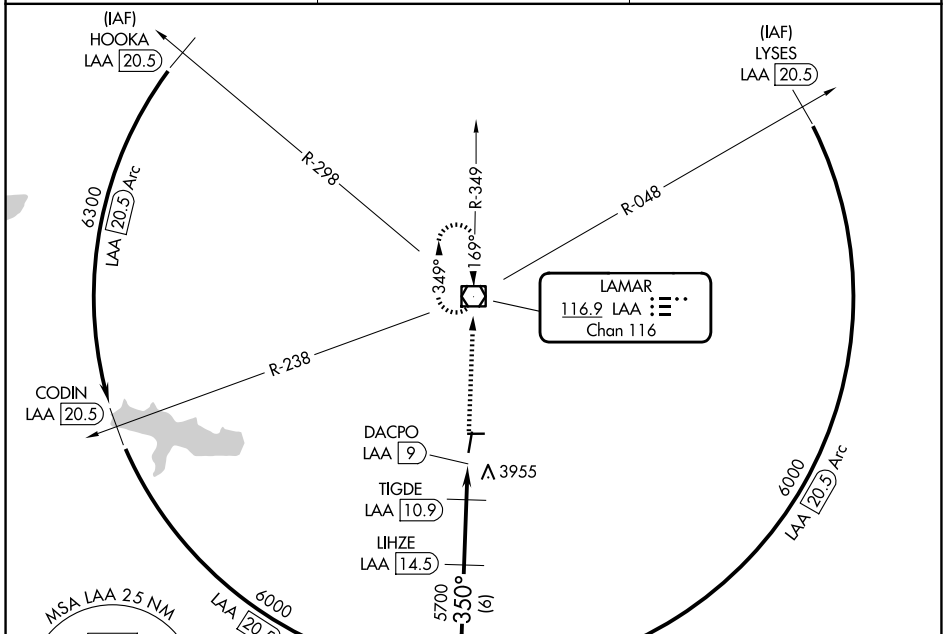
VOR/DME LAA 116.9 Chan 116	APP CRS 350°	Rwy Ldg TDZE 6304 3705	Apt Elev 3705
--	------------------------	--	-------------------------

VOR RWY 36

SOUTHEAST COLORADO RGNL (L.A.A)

DME required.	MISSED APPROACH: Climb to 6000 direct LAA VOR/DME and hold.
<p>Rwy 36 helicopter visibility reduction below 3/4 SM NA.</p>	

ASOS 135.625	DENVER CENTER 133.4 377.175	UNICOM 122.8 (CTAF) 0
------------------------	---------------------------------------	---------------------------------



SW-1, 16 APR 2026 to 14 MAY 2026

SW-1, 16 APR 2026 to 14 MAY 2026