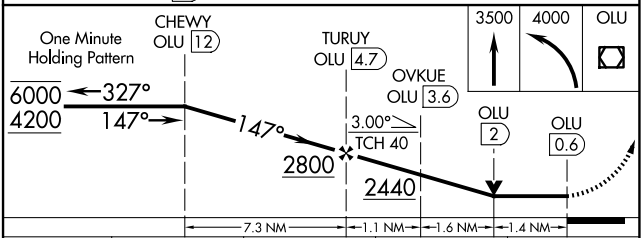
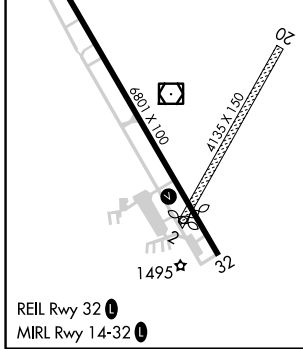
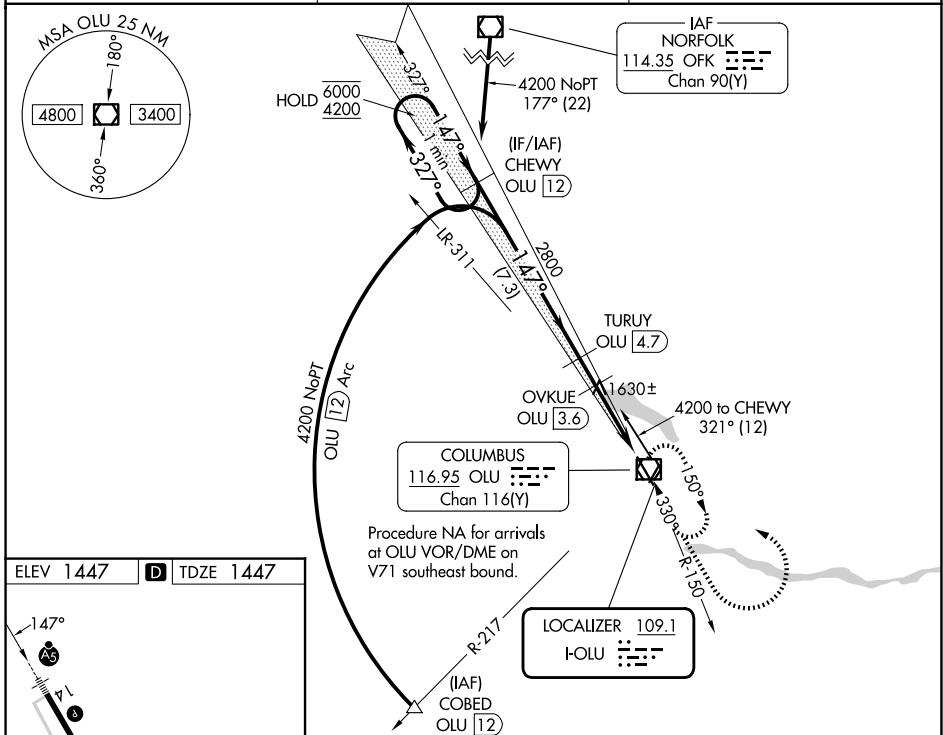


LOC I-OLU 109.1	APP CRS 147°	Rwy Ldg TDZE Apt Elev	6260 1447 1447
---------------------------	------------------------	-----------------------------	---

LOC RWY 14
COLUMBUS MUNI (OLU)

DME required.	MALSR	MISSED APPROACH: Climb to 3500 then climbing left turn to 4000 direct OLU VOR/DME and hold.
Circling NA to Rws 2 and 20. Rwy 14 helicopter visibility reduction below 3/4 SM NA. VDP NA when using OFK altimeter setting. When local altimeter setting not received, use OFK altimeter setting and increase all MDAs 100 feet, S-14 Cat C and D visibility 1/2 SM and Circling Cat C and D visibility 1/2 SM. For inop ALS, increase S-14 Cats A and B visibility to 1 SM and Cats C and D visibility to 1 1/8 SM. For inop ALS when using OFK altimeter setting, increase S-14 Cats A and B visibility to 1 SM and Cats C and D visibility to 1 1/8 SM.		

AWOS-3PT 125.525	MINNEAPOLIS CENTER 128.75 346.3	UNICOM 123.05 (CTAF) 0
----------------------------	---	----------------------------------



CATEGORY	A	B	C	D
S-14	1920-3/4	473 (500-3/4)	1920-1	473 (500-1)
CIRCLING	2000-1	553 (600-1)	2100-1 3/4 653 (700-1 3/4)	2100-2 653 (700-2)

NC-2, 16 APR 2026 to 14 MAY 2026

NC-2, 16 APR 2026 to 14 MAY 2026