

(KAYLN3.KAYLN) 26078

KAYLN THREE DEPARTURE (RNAV)

AL-5293 (FAA)

OAKLAND/TROY (VLL)
TROY, MICHIGAN

EC-1, 16 APR 2026 to 14 MAY 2026

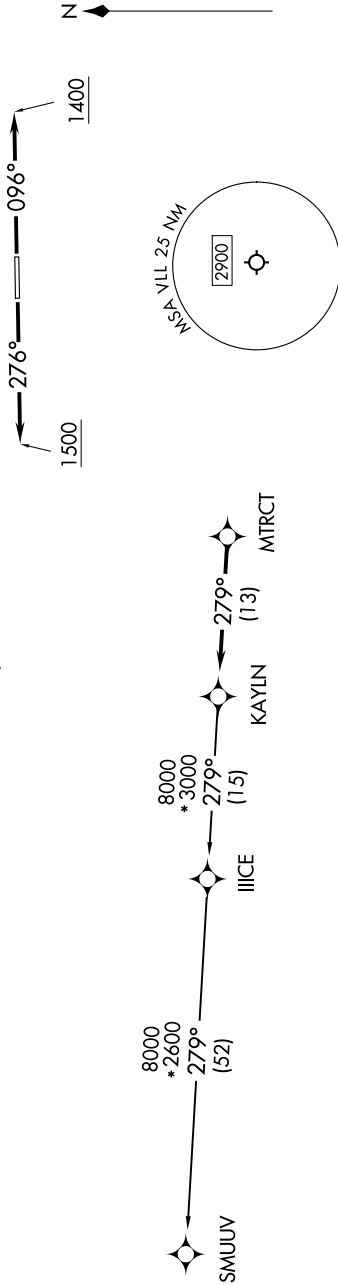
**TOP ALTITUDE:
ASSIGNED AT ATC**

RNAV-1 DME/IRU or GPS.
RADAR required.

TAKEOFF MINIMUMS:
Rwy 10: Standard.
Rwy 28: Standard with minimum climb of 476' per NM to 1500.

DETROIT DEP CON
132.35 284.0
AWOS-3P
119.475
CTAF
123.05

NOTE: Turbojet departures at/above 10000, maintain 280K until advised by ATC.



NOTE: Chart not to scale.

DEPARTURE ROUTE DESCRIPTION

TAKEOFF RUNWAY 10: Climb on heading 096° to 1400 then as assigned by ATC, thence....
TAKEOFF RUNWAY 28: Climb on heading 276° to 1500 then as assigned by ATC, thence....

....for RADAR vectors to MTRCT, then on track 279° to KAYLN, then on (transition). Maintain ATC assigned altitude, expect filed altitude 10 minutes after departure.

SMUUV TRANSITION (KAYLN3.SMUUV):

EC-1, 16 APR 2026 to 14 MAY 2026

KAYLN THREE DEPARTURE (RNAV)
(KAYLN3.KAYLN) 16MAY24

TROY, MICHIGAN
OAKLAND/TROY (VLL)