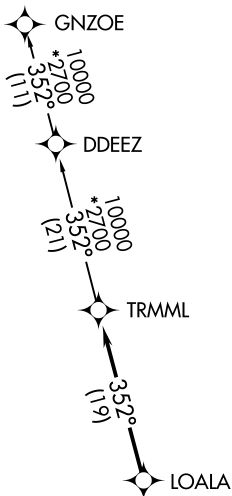


**TOP ALTITUDE:
ASSIGNED BY ATC**

RNAV 1 - DME/DME/IRU or GPS.

RADAR required.

DETROIT DEP CON
132.35 284.0
AWOS-3P
119.475
CTAF
123.05

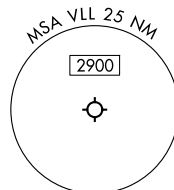


NOTE: Turbojet departures at/above 10000, maintain 280K until advised by ATC.

TAKEOFF MINIMUMS:

Rwy 10: Standard.

Rwy 28: Standard with minimum climb of 476' per NM to 1500.



NOTE: Chart not to scale.

DEPARTURE ROUTE DESCRIPTION

TAKEOFF RUNWAY 10: Climb on heading 096° to 1400 then as assigned by ATC, thence....

TAKEOFF RUNWAY 28: Climb on heading 276° to 1500 then as assigned by ATC, thence....

....for RADAR vectors to LOALA, then on track 352° to TRMML, then on (transition). Maintain ATC assigned altitude, expect filed altitude 10 minutes after departure.

GNZOE TRANSITION (TRMML4.GNZOE):

EC-1, 16 APR 2026 to 14 MAY 2026

EC-1, 16 APR 2026 to 14 MAY 2026