

APP CRS 218°	Rwy Ldg 4000
	TDZE 2565
	Apt Elev 2583

RNAV (GPS) RWY 22

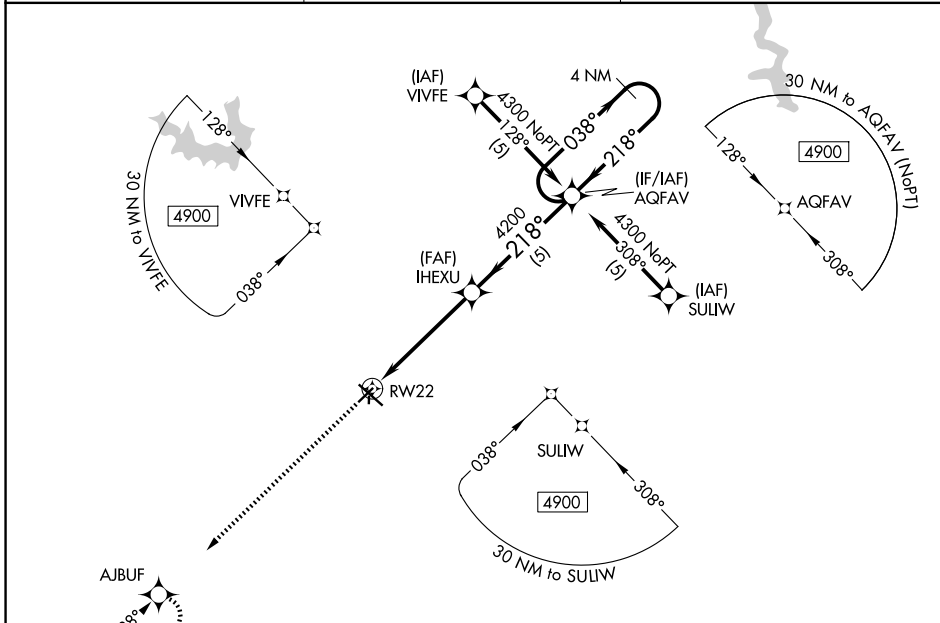
MC COOK BEN NELSON RGNL (MCK)

RNP APCH-GPS.

▼ When local altimeter setting not received, use Imperial Muni altimeter setting and increase all MDA 220 feet, increase S-22 and Circling Cat C visibility ¾ mile. VDP NA when using Imperial Muni altimeter setting. Circling NA to Rws 17 and 35.

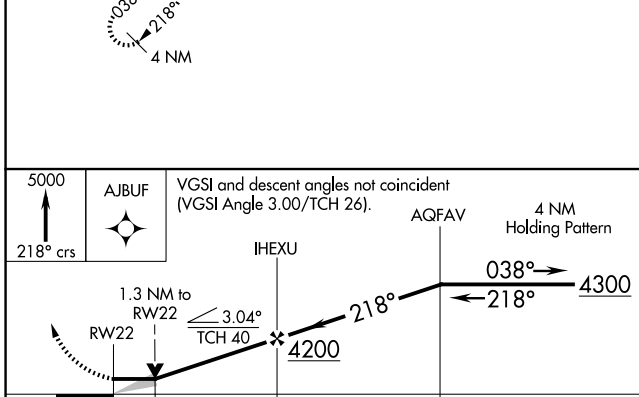
MISSED APPROACH: Climb to 5000 via 218° course to AJBUF and hold.

ASOS 119.025	DENVER CENTER 132.7 226.675	UNICOM 122.8 (CTAF)
------------------------	---------------------------------------	-------------------------------



NC-2, 16 APR 2026 to 14 MAY 2026

NC-2, 16 APR 2026 to 14 MAY 2026



ELEV 2583	D TDZE 2565
-----------	--------------------

The diagram shows the RWY 22 approach with altitudes of 4000 ft, 4300 ft, and 4900 ft. Key distances and angles include:

- 1.3 NM from RWY 22 to 4000 ft.
- 3.7 NM from 4000 ft to 4200 ft (TCH 40, 3.04°).
- 5 NM from 4200 ft to 4300 ft.
- 4 NM holding pattern at AQFAV.
- Angles: 218°, 038°, 128°.

CATEGORY	A	B	C	D
RNAV MDA	3000-1	435 (500-1)	3000-1¼ 435 (500-1¼)	NA
CIRCLING	3040-1 457 (500-1)	3120-1 537 (600-1)	3360-2¼ 777 (800-2¼)	NA

REIL Rwy 30
MIRL Rws 4-22 and 12-30