

WAAS CH <b>78417</b> <b>W21A</b>	APP CRS <b>218°</b>	Rwy Ldg TDZE Apt Elev	<b>4314</b> <b>1449</b> <b>1469</b>
--	------------------------	-----------------------------	---

# RNAV (GPS) RWY 21

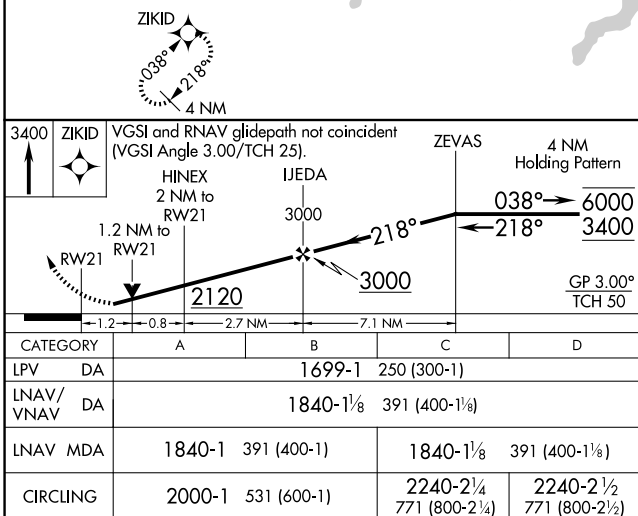
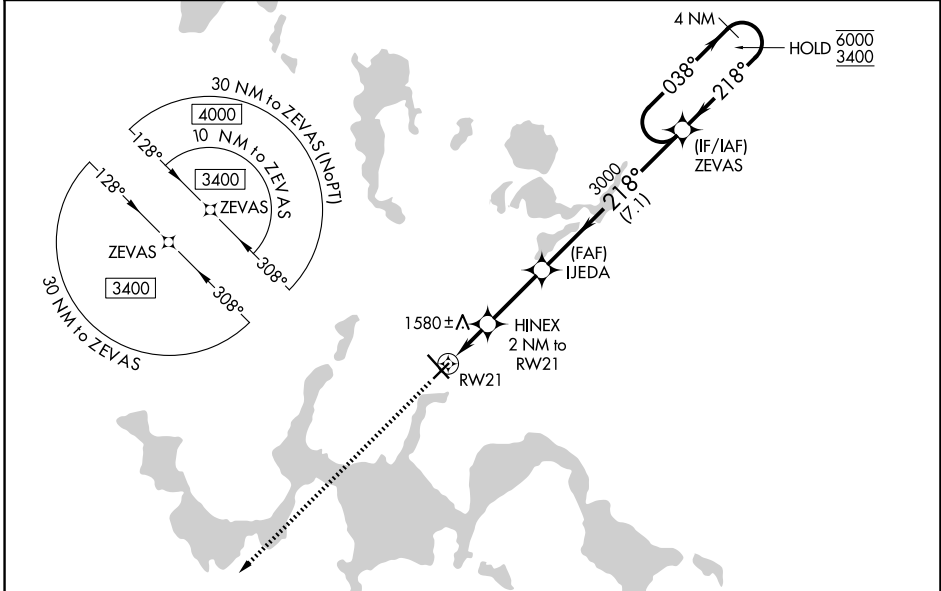
DEVILS LAKE RGNL (DVL)

RNP APCH - GPS.

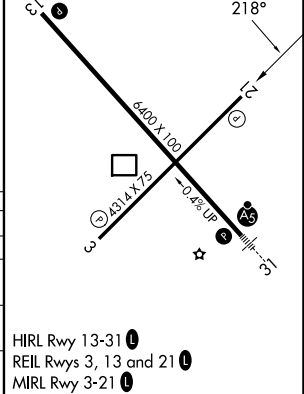
⚠ For uncompensated Baro-VNAV systems, LNAV/VNAV NA below -17°C or above 54°C. Baro-VNAV and VDP NA when using 9D7 altimeter setting. Rwy 21 helicopter visibility reduction below 3/4 SM NA. When local altimeter setting not received, use 9D7 altimeter setting and increase LPV DA to 1760 feet; increase LNAV/VNAV DA to 1901 feet and all visibilities 1/4 SM. Increase all MDAs 80 feet and LNAV visibility Cat C/D 1/4 SM, and Circling visibility Cat C/D 1/4 SM.

MISSED APPROACH:  
Climb to 3400 direct  
ZIKID and hold.

AWOS-3PT <b>125.875</b>	MINNEAPOLIS CENTER <b>124.2 270.3</b>	UNICOM <b>122.8 (CTAF)</b>
----------------------------	--	-------------------------------



ELEV 1469	TDZE 1449
-----------	-----------



NC-1, 16 APR 2026 to 14 MAY 2026

NC-1, 16 APR 2026 to 14 MAY 2026

HRL Rwy 13-31  
REIL Rwys 3, 13 and 21  
MIRL Rwy 3-21