

WAAS CH 93608 W03A	APP CRS 038°	Rwy Ldg TDZE Apt Elev	4314 1450 1470
--	------------------------	-----------------------------	---

RNAV (GPS) RWY 3

DEVILS LAKE RGNL (DVL)

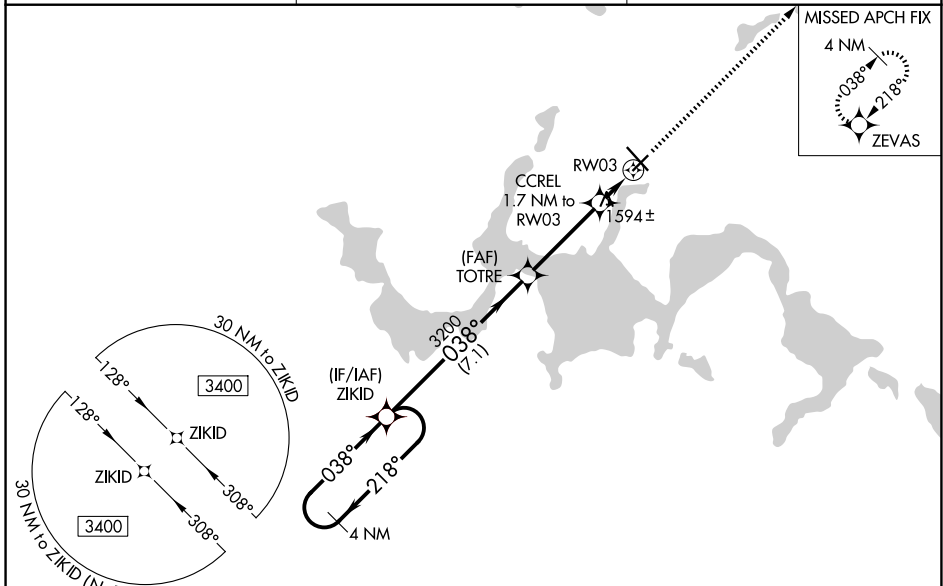
⚠ For uncompensated Baro-VNAV systems, LNAV/VNAV NA below -17°C (2°F) or above 54°C (130°F). DME/DME RNP-0.3 NA. When local altimeter setting not received, use Cando altimeter setting and increase all DA 63 feet, and all MDA 80 feet, increase LNAV/VNAV all Cats visibility 1/8 mile, LNAV and Circling Cat C and D visibility 1/4 mile. Helicopter visibility reduction below 3/4 SM NA. Baro-VNAV NA when using Cando altimeter setting.

MISSED APPROACH: Climb to 3400 direct ZEVAS and hold.

AWOS-3PT
125.875

MINNEAPOLIS CENTER
124.2 270.3

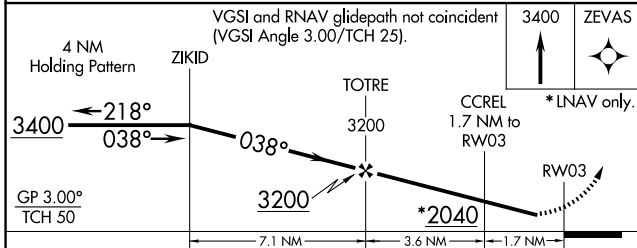
UNICOM
122.8 (CTAF)



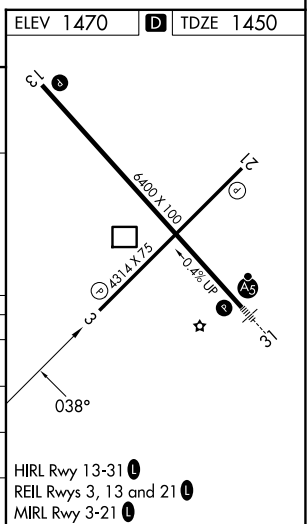
NC-1, 16 APR 2026 to 14 MAY 2026

NC-1, 16 APR 2026 to 14 MAY 2026

ELEV 1470 **D** TDZE 1450



CATEGORY	A	B	C	D
LPV DA	1700-1		250 (300-1)	
LNAV/VNAV DA	1714-1		264 (300-1)	
LNAV MDA	1860-1 410 (400-1)		1860-1 1/8 410 (400-1 1/8)	
CIRCLING	2000-1 530 (600-1)		2240-2 1/4 770 (800-2 1/4) 2240-2 1/2 770 (800-2 1/2)	



HIRL Rwy 13-31 **Ⓛ**
REIL Rwy 3, 13 and 21 **Ⓛ**
MIRL Rwy 3-21 **Ⓛ**