

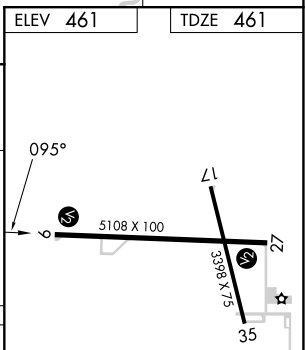
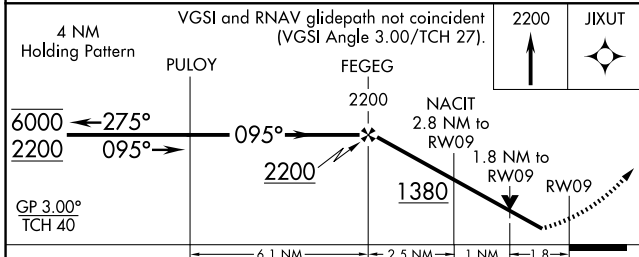
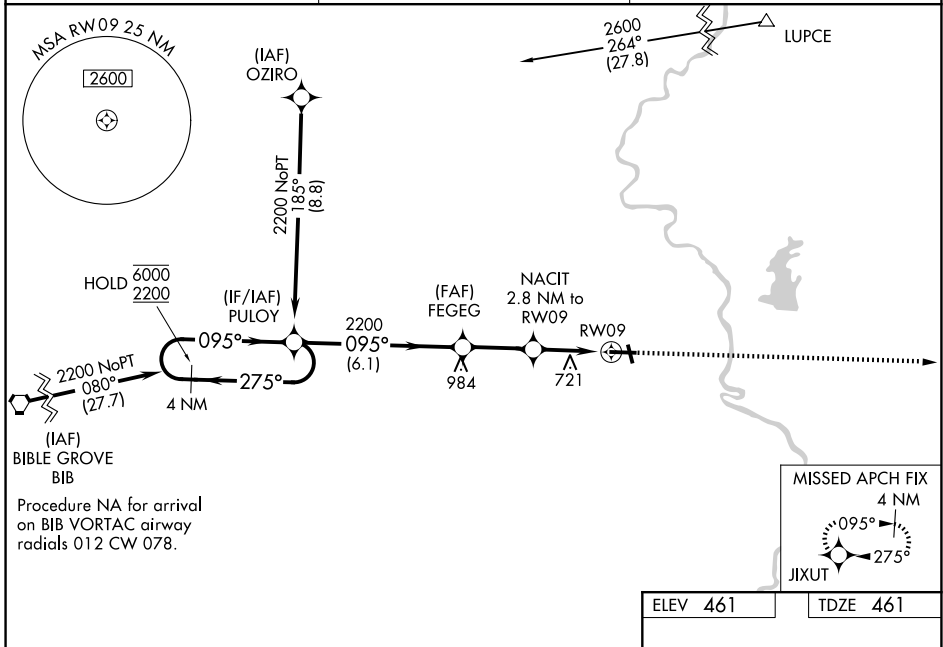
WAAS CH 49109 W09A	APP CRS 095°	Rwy Ldg TDZE Apt Elev	5108 461 461
--	------------------------	-----------------------------	---

RNAV (GPS) RWY 9

CRAWFORD COUNTY (RSV)

RNP APCH - GPS.		MISSED APPROACH: Climb to 2200 direct JIXUT and hold.
⚠ ⚠	Rwy 9 helicopter visibility reduction below ¾ SM NA. For uncompensated Baro-VNAV systems, LNAV/VNAV NA below -15° C or above 54° C.	

AWOS-3 120.50	HULMAN APP CON 135,35 339.8	UNICOM 123.0 (CTAF) 0
-------------------------	---------------------------------------	---------------------------------



CATEGORY	A	B	C	D
LPV DA		805-1 1/8	344 (400-1 1/8)	
LNAV/VNAV DA		1103-2 1/2	642 (700-2 1/2)	
LNAV MDA	1040-1	579 (600-1)	1040-1 1/8	579 (600-1 1/8)
CIRCLING	1040-1 579 (600-1)	1080-1 619 (700-1)	1120-1 1/4 659 (700-1 1/4)	1180-2 1/4 719 (800-2 1/4)

REIL Rwy 17, 9 and 27 0
MRL Rwy 9-27 and 17-35 0

EC-3, 16 APR 2026 to 14 MAY 2026

EC-3, 16 APR 2026 to 14 MAY 2026