

WAAS CH <b>56517</b> <b>W12A</b>	APP CRS <b>121°</b>	Rwy Ldg TDZE Apt Elev	<b>6001</b> <b>1339</b> <b>1339</b>
--	------------------------	-----------------------------	---

# RNAV (GPS) RWY 12

SPENCER MUNI (SPW)

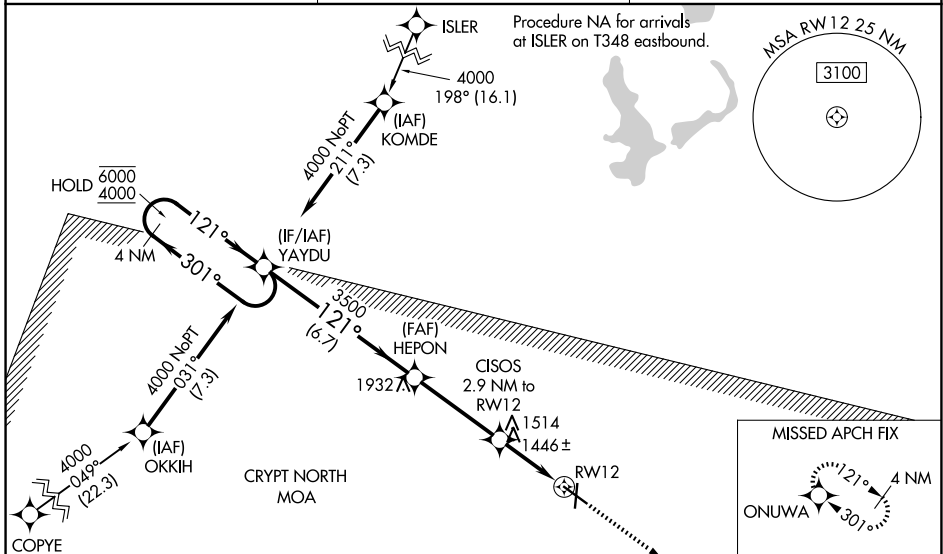
RNP APCH-GPS.

**⚠** Baro-VNAV and VDP NA when using Estherville altimeter setting. For uncompensated Baro-VNAV systems, LNAV/VNAV NA below -21°C or above 54°C. When local altimeter setting not received, use Estherville altimeter setting: increase LPV DA to 1599 feet, LNAV/VNAV DA to 1650 feet; increase all MDAs 60 feet, and visibility LNAV Cat C/D ½ SM, and Circling Cat C/D ¼ SM. For inop ALS when using Estherville altimeter setting, increase LNAV/VNAV all Cats visibility to ¾ SM and LNAV Cats C/D to 1 SM. For inop ALS, increase LNAV/VNAV all Cats visibility to ¾ SM and LNAV Cat C/D to 1 SM.

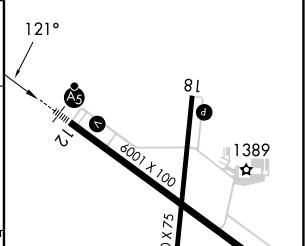
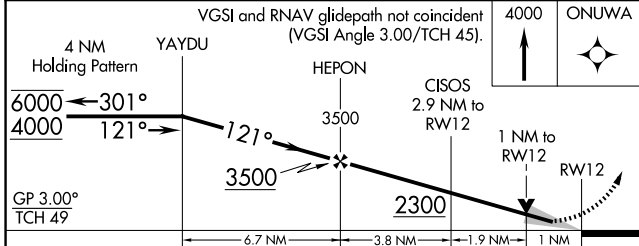
MALSRL  
AS

MISSED APPROACH:  
Climb to 4000 direct ONUWA and hold.

ASOS <b>126.625</b>	MINNEAPOLIS CENTER <b>127.75 257.7</b>	UNICOM <b>123.0 (CTAF)</b>
------------------------	---	-------------------------------



ELEV 1339	TDZE 1339
-----------	-----------



CATEGORY	A	B	C	D
LPV DA		1539-½	200 (200-½)	
LNAV/VNAV DA		1590-½	251 (300-½)	
LNAV MDA	1700-½	361 (400-½)	1700-⅝	361 (400-⅝)
CIRCLING	1760-1 421 (500-1)	1800-1 461 (500-1)	2100-2¼ 761 (800-2¼)	2100-2½ 761 (800-2½)

REIL Rwy 18, 30 and 36

MIRL Rwy 12-30 and 18-36

NC-3, 16 APR 2026 to 14 MAY 2026

NC-3, 16 APR 2026 to 14 MAY 2026