

WAAS CH 82233 W36A	APP CRS 001°	Rwy Ldg TDZE Apt Elev	5100 1337 1339
--	------------------------	-----------------------------	---

RNAV (GPS) RWY 36

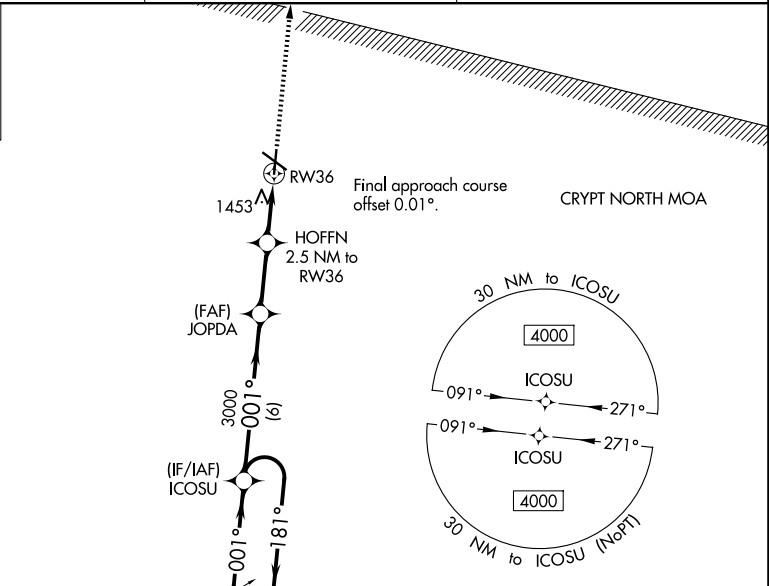
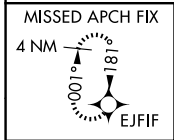
SPENCER MUNI (SPW)

RNP APCH-GPS.

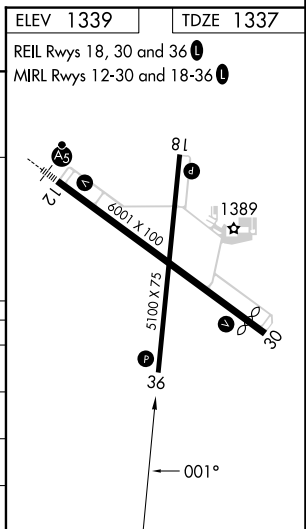
⚠ Baro-VNAV and VDP NA when using Estherville altimeter setting. Rwy 36 helicopter visibility reduction below 1 SM NA. For uncompensated Baro-VNAV systems, LNAV/VNAV NA below -20° C or above 54° C. When local altimeter setting not received, use Estherville altimeter setting: increase LPV DA to 1648 feet, LNAV/VNAV DA to 1792 feet and LNAV/VNAV visibility ¼ SM; increase all MDAs 60 feet.

MISSED APPROACH:
Climb to 4000 direct EJFIF and hold, continue climb-in-hold to 4000.

ASOS 126.625	MINNEAPOLIS CENTER 127.75 257.7	UNICOM 123.0 (CTAF) 0
------------------------	---	---------------------------------



4 NM Holding Pattern		ICOSU		JOPDA		HOFFN 2.5 NM to RW36		4000		EJFIF	
6000 ← 181°		4000 → 001°		001°		3000		2180		1 NM to RW36	
GP 3.00° TCH 53		6 NM		2.6 NM		1.5 NM		1 NM		RW36	
CATEGORY	A	B	C	D							
LPV DA	1588-1	251 (300-1)			NA						
LNAV/VNAV DA	1732-1½	395 (400-1½)			NA						
LNAV MDA	1720-1	383 (400-1)			NA						
CIRCLING	1760-1	1800-1			NA						
	421 (500-1)	461 (500-1)									



NC-3, 16 APR 2026 to 14 MAY 2026

NC-3, 16 APR 2026 to 14 MAY 2026