

VOR/DME SPW 115.15 Chan 98(Y)	APP CRS 292°	Rwy Ldg TDZE Apt Elev	5111 1338 1339
---	------------------------	-----------------------------	---

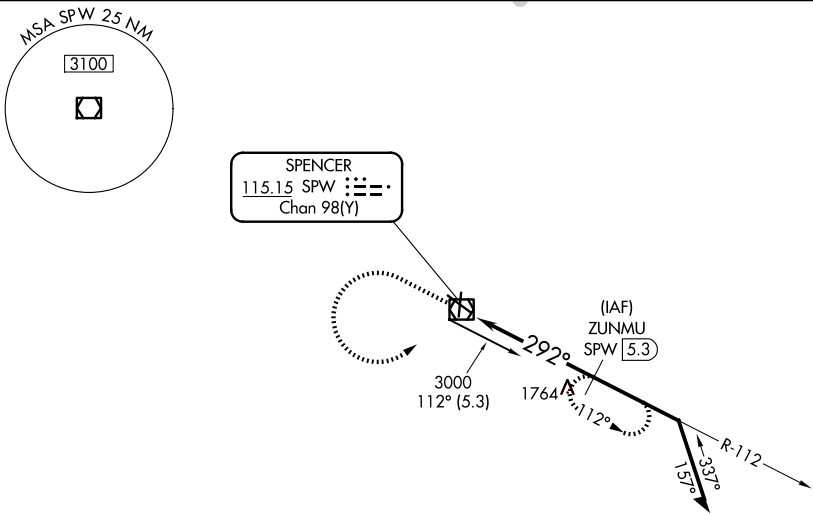
VOR RWY 30
SPENCER MUNI (SPW)

DME required.

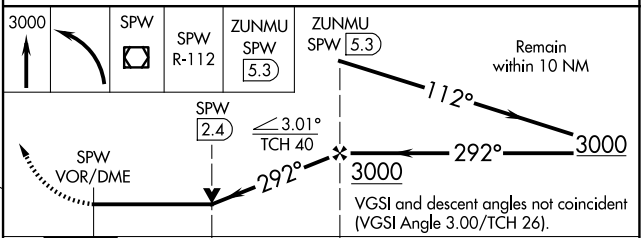
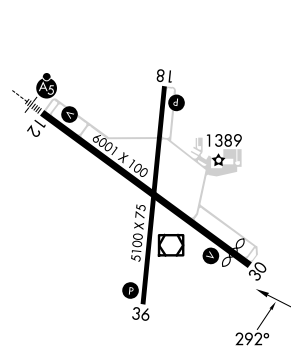
⚠ VDP NA when using Estherville altimeter setting.
⚠ When local altimeter setting not received, use Estherville altimeter setting and increase all MDA 60 feet and increase S-30 Cat C/D visibility ½ SM and Circling Cat C/D visibility ¼ SM.

MISSED APPROACH: Climb to 3000, then left turn direct SPW VOR/DME, then on SPW VOR/DME R-112 to ZUNMU/SPW 5.3 DME and hold.

ASOS 126.625	MINNEAPOLIS CENTER 127.75 257.7	UNICOM 123.0 (CTAF) 0
------------------------	---	---------------------------------



ELEV 1339	TDZE 1338
-----------	-----------



CATEGORY	A	B	C	D
S-30	2080-1 742 (800-1)	2080-1¼ 742 (800-1¼)	2080-2	742 (800-2)
CIRCLING	2080-1 741 (800-1)	2080-1¼ 741 (800-1¼)	2100-2¼ 761 (800-2¼)	2100-2½ 761 (800-2½)

SPENCER, IOWA
Amdt 3C 28FEB19

43°10'N-95°12'W

SPENCER MUNI (SPW)
VOR RWY 30

NC-3, 16 APR 2026 to 14 MAY 2026

NC-3, 16 APR 2026 to 14 MAY 2026