

(CWARD2.CWARD) 17341

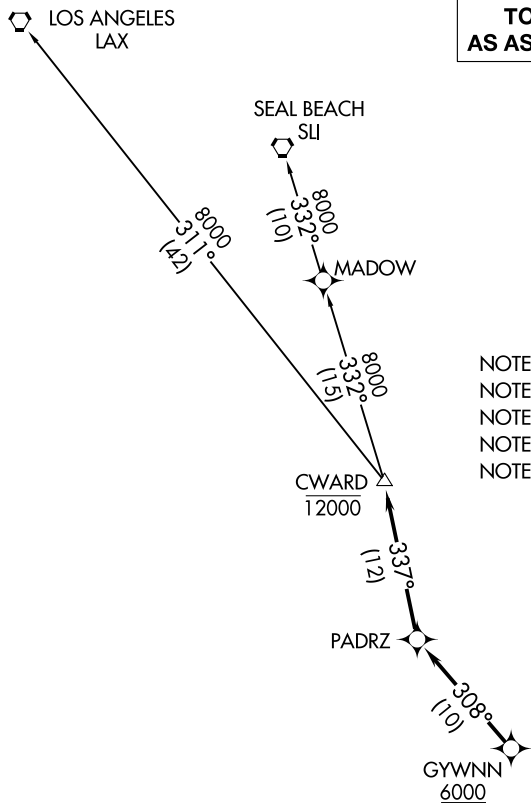
CWARD TWO DEPARTURE (RNAV)

AL-5310 (FAA)

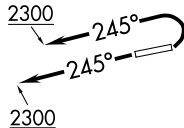
MC CLELLAN-PALOMAR (CRQ)
CARLSBAD, CALIFORNIA

**TOP ALTITUDE:
AS ASSIGNED BY ATC**

ATIS
120.15
PALOMAR TOWER★
118.6 276.4
SOCAL DEP CON
119.6 363.1



- NOTE: RADAR required.
- NOTE: RNAV 1.
- NOTE: GPS or DME/DME/IRU required.
- NOTE: Turbojet and turboprop only.
- NOTE: Tower En Route control only.



TAKEOFF MINIMUMS

- Rwy 6: Standard with minimum climb of 255' per NM to 1700.
- Rwy 24: Standard.

NOTE: Chart not to scale.

DEPARTURE ROUTE DESCRIPTION

TAKEOFF RUNWAY 6: Climbing left turn heading 245° to 2300, do not exceed 210K until established on heading 245°, expect vectors to cross GYWNN at or above 6000, then on track 308° to PADRZ, then on track 337° to cross CWARD at or below 12000, thence. . . .

TAKEOFF RUNWAY 24: Climb heading 245° to 2300, expect vectors to cross GYWNN at or above 6000, then on track 308° to PADRZ, then on track 337° to cross CWARD at or below 12000, thence. . . .

. . . on transition. Maintain ATC assigned altitude. Expect filed altitude 10 minutes after departure.

- LOS ANGELES TRANSITION (CWARD2.LAX)
- SEAL BEACH TRANSITION (CWARD2.SLI)

CWARD TWO DEPARTURE (RNAV)
(CWARD2.CWARD) 07DEC17

CARLSBAD, CALIFORNIA
MC CLELLAN-PALOMAR (CRQ)

SW-3, 16 APR 2026 to 14 MAY 2026

SW-3, 16 APR 2026 to 14 MAY 2026