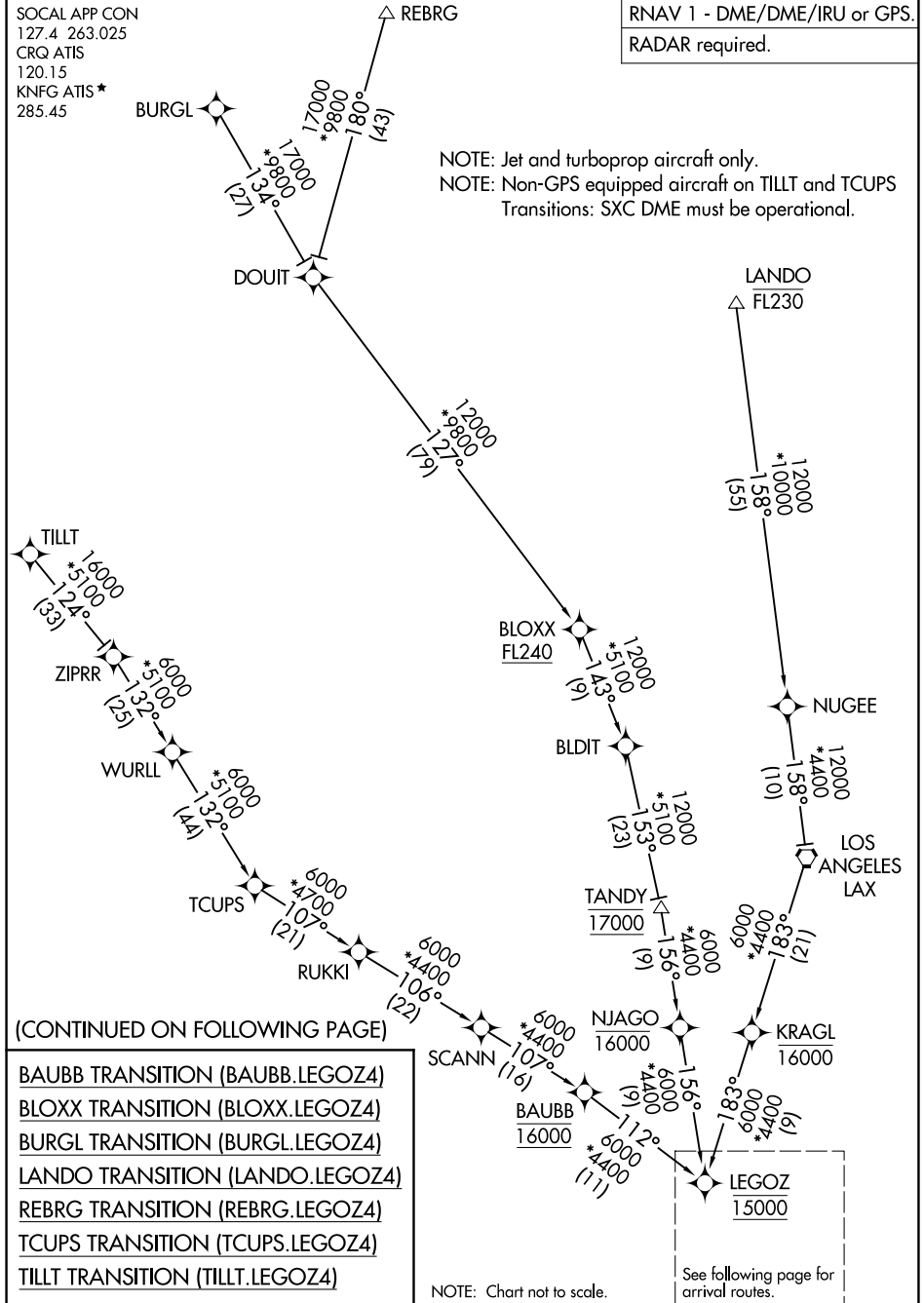


LEGOZ FOUR ARRIVAL (RNAV) Transition Routes

SOCAL APP CON
127.4 263.025
CRQ ATIS
120.15
KNFG ATIS*
285.45

RNAV 1 - DME/DME/IRU or GPS.
RADAR required.

NOTE: Jet and turboprop aircraft only.
NOTE: Non-GPS equipped aircraft on TILLT and TCUPS
Transitions: SXC DME must be operational.



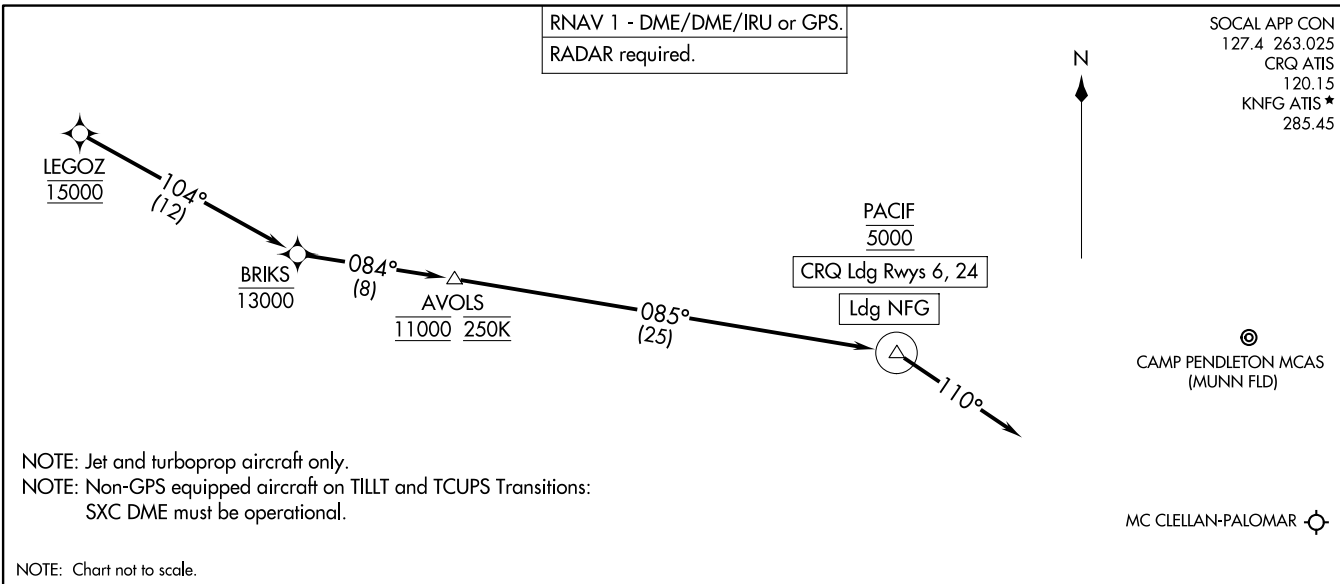
SW-3, 16 APR 2026 to 14 MAY 2026

SW-3, 16 APR 2026 to 14 MAY 2026

(LEGOZ.LEGOZ4) 07AUG25

LEGOZ FOUR ARRIVAL (RNAV) Arrival Routes

CARLSBAD, CALIFORNIA



(LEGOZ.LEGOZ4) 25219

Arrival Routes

A1-5310 (FAA)

CARLSBAD, CALIFORNIA

ARRIVAL ROUTE DESCRIPTION

LANDING NFG: From LEGOZ on track 104° to cross BRIKS at or below 13000, then on track 084° to cross AVOLS at 11000 and at 250K, then on track 085° to cross PACIF at 5000, then on track 110°. Expect RADAR vectors to final approach course.

LANDING CRQ RUNWAY 6: From LEGOZ on track 104° to cross BRIKS at or below 13000, then on track 084° to cross AVOLS at 11000 and at 250K, then on track 085° to cross PACIF at 5000, then on track 110°. Expect RNAV (RNP) Z RWY 6 approach or RADAR vectors to final approach course.

LANDING CRQ RUNWAY 24: From LEGOZ on track 104° to cross BRIKS at or below 13000, then on track 084° to cross AVOLS at 11000 and at 250K, then on track 085° to cross PACIF at 5000, then on track 110°. Expect RADAR vectors to final approach course.