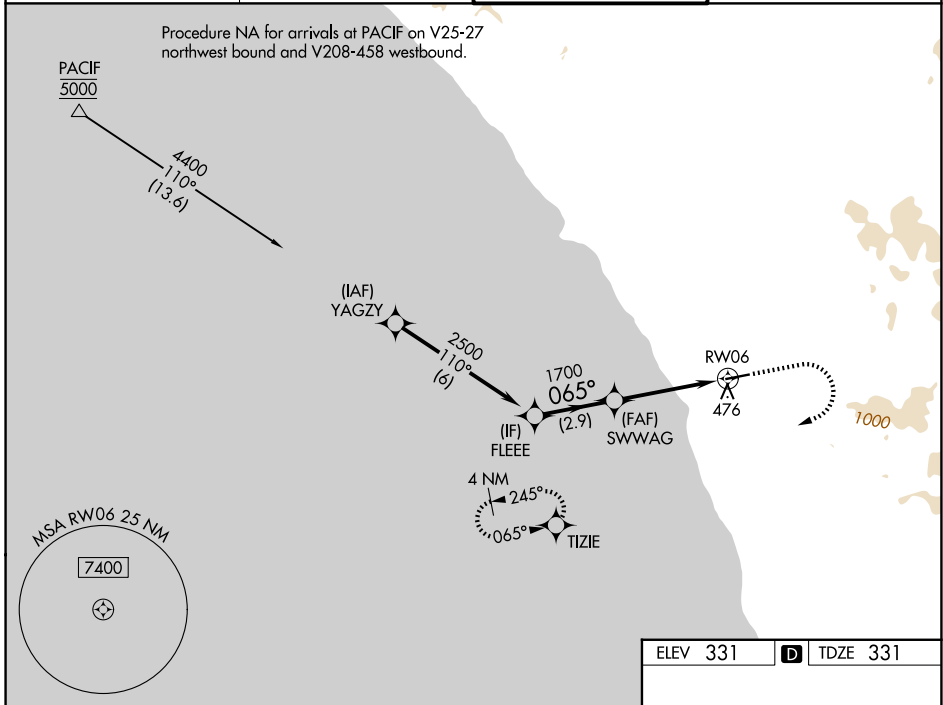


WAAS CH 40239 W06A	APP CRS 065°	Rwy Ldg TDZE Apt Elev	4600 331 331
--	------------------------	-----------------------------	---

RNAV (GPS) Y RWY 6

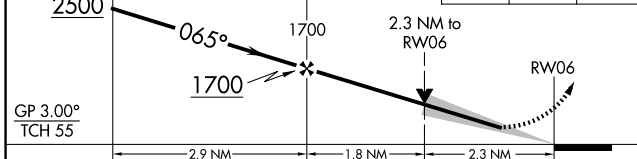
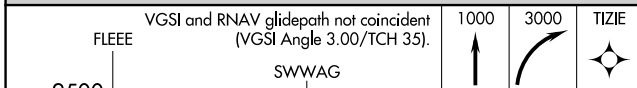
MC CLELLAN-PALOMAR (CRQ)

RNP APCH - GPS.		MISSED APPROACH: Climb to 1000 then climbing right turn to 3000 direct TIZIE and hold, continue climb-in-hold to 3000.	
<p>▼ For uncompensated Baro-VNAV systems, LNAV/VNAV NA below 5°C or above 54°C.</p> <p>▲</p>			
ATIS 120.15	SOCAL APP CON 127.3 323.0	PALOMAR TOWER★ 118.6 (CTAF) 0 276.4	GND CON 121.8



SW-3, 16 APR 2026 to 14 MAY 2026

SW-3, 16 APR 2026 to 14 MAY 2026



ELEV 331	D TDZE 331
----------	-------------------

CATEGORY	A	B	C	D
LPV DA		796-1 $\frac{3}{8}$	465 (500-1 $\frac{3}{8}$)	
LNAV/VNAV DA		837-1 $\frac{3}{8}$	506 (600-1 $\frac{3}{8}$)	
LNAV MDA	1100-1 769 (800-1)	1100-1 $\frac{1}{4}$ 769 (800-1 $\frac{1}{4}$)	1100-2 $\frac{1}{2}$	769 (800-2 $\frac{1}{2}$)
CIRCLING	1100-1 769 (800-1)	1100-1 $\frac{1}{4}$ 769 (800-1 $\frac{1}{4}$)	1260-2 $\frac{3}{4}$ 929 (1000-2 $\frac{3}{4}$)	NA

HIRL Rwy 6-24 0
