

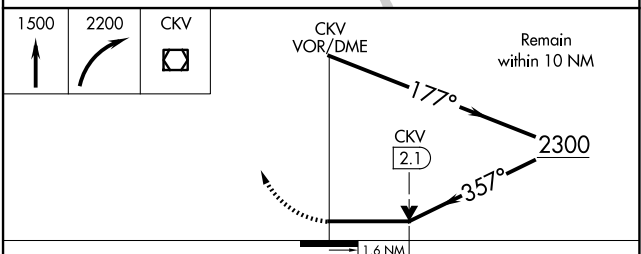
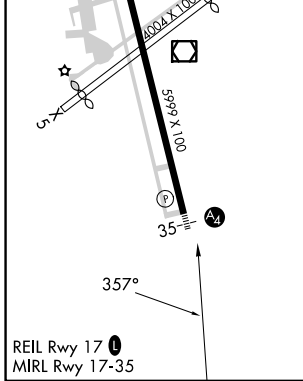
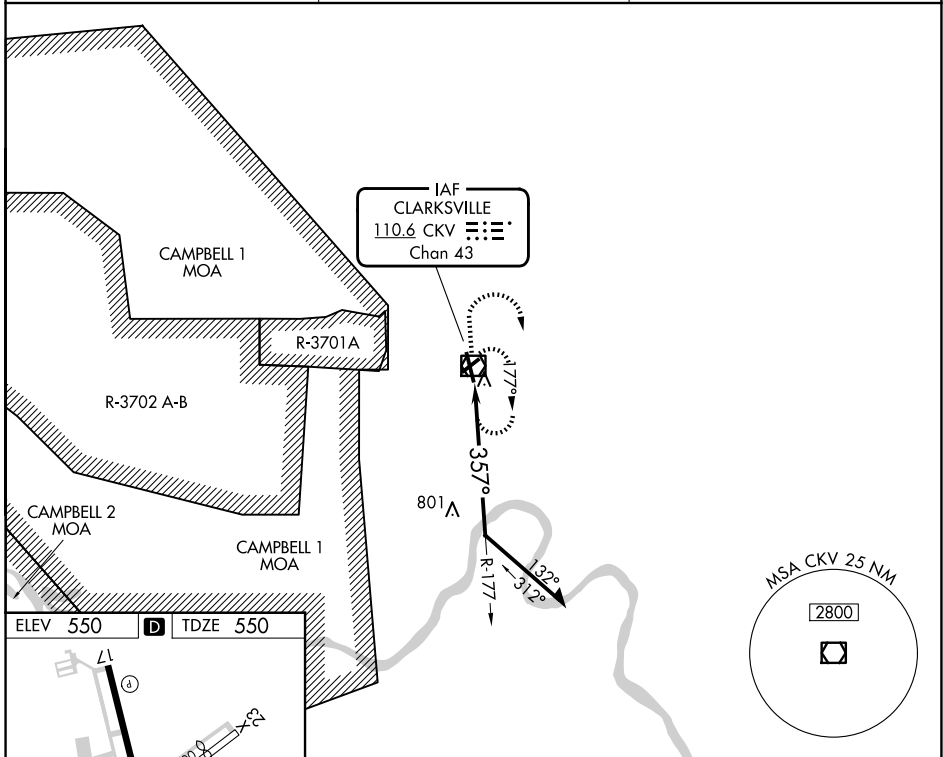
VOR/DME CKV 110.6 Chan 43	APP CRS 357°	Rwy Ldg TDZE 550 Apt Elev 550	5999
---	------------------------	---	-------------

VOR RWY 35

OUTLAW FLD (CKV)

RADAR required for procedure entry.		MALS A1	MISSED APPROACH: Climb to 1500 then climbing right turn to 2200 direct CKV VOR/DME and hold.
<p>⚠ Circling NA W of Rwy 17-35. Circling Rwy 5, 17, 23 NA at night. Rwy 35 helicopter visibility reduction below 3/4 SM NA. When local altimeter setting not received, use Campbell AAF (Fort Campbell) altimeter setting.</p>			

ASOS 134.575	CAMPBELL APP CON 134.35 307.025	UNICOM 122.8 (CTAF)
------------------------	---	-------------------------------



CATEGORY	A	B	C	D
S-35	1120-1 570 (600-1)		1120-1½ 570 (600-1½)	1120-1¾ 570 (600-1¾)
CIRCLING	1120-1 570 (600-1)		1120-1⅝ 570 (600-1⅝)	1200-2 650 (700-2)

SE-1, 16 APR 2026 to 14 MAY 2026

SE-1, 16 APR 2026 to 14 MAY 2026