

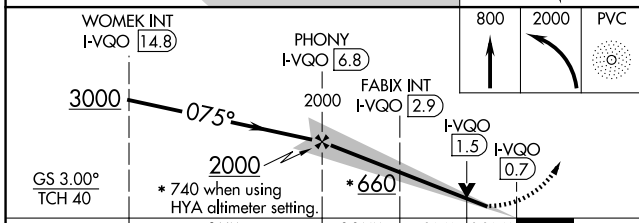
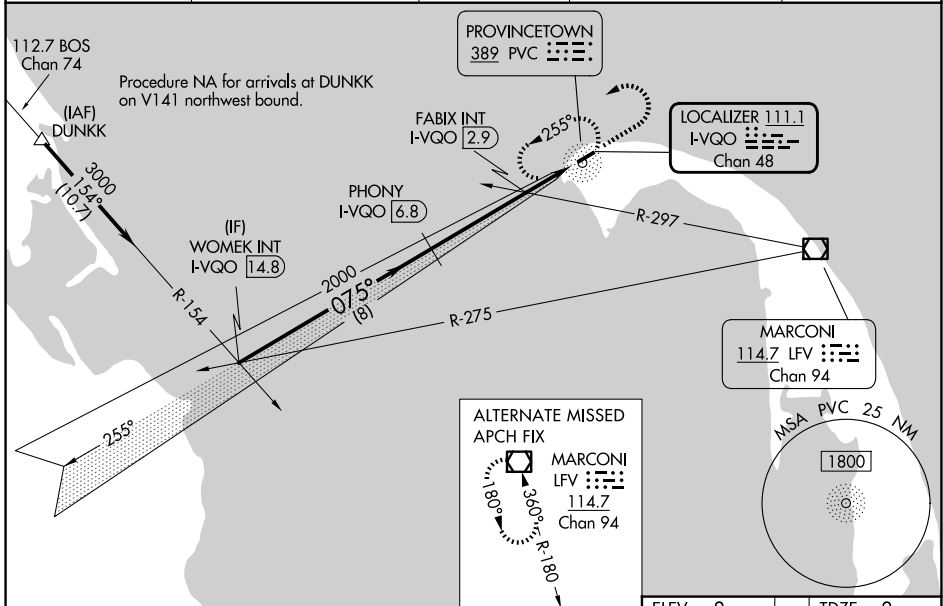
LOC/DME I-VQO <b>111.1</b> Chan 48	APP CRS <b>075°</b>	Rwy Ldg TDZE Apt Elev	<b>3502</b> <b>8</b> <b>8</b>
--	------------------------	-----------------------------	-------------------------------------

# ILS or LOC RWY 7

PROVINCETOWN MUNI (PVC)

ADF required. DME required for LOC only.		MALSF	MISSED APPROACH: Climb to 800 then climbing left turn to 2000 direct PVC NDB and hold, continue climb-in-hold to 2000.
<p>⚠ NA Circling Rwy 25 NA at night. VDP NA when using HYA altimeter setting. Inop table does not apply to S-ILS 7. For inop ALS when using HYA altimeter setting, increase S-ILS 7 all Cats visibility to 3/8 SM. When local altimeter setting not received, use HYA altimeter setting and increase all S-ILS 7 to 271 feet and all MDA 80 feet.</p>			

AWOS-3PT <b>119.275</b>	BOSTON APP CON <b>118.2</b>	CLNC DEL <b>120.65</b>	UNICOM <b>122.8</b> (CTAF)	<b>122.85</b> ①
----------------------------	--------------------------------	---------------------------	-------------------------------	-----------------



CATEGORY	A	B	C	D
S-ILS 7	208-3/4	200 (200-3/4)		NA
S-LOC 7	660-3/4	652 (700-3/4)		NA
CIRCLING	660-1	652 (700-1)		NA
FABIX FIX MINIMUMS (DUAL VOR RECEIVERS OR DME REQUIRED)				
S-LOC 7	320-3/4	312 (400-3/4)		NA
CIRCLING	460-1 452 (500-1)	660-1 652 (700-1)		NA

ELEV 8	TDZE 8
--------	--------

REIL Rwy 25 ①  
HIRL Rwy 7-25 ①

FAF to MAP 6.1 NM

Knots	60	90	120	150	180
Min:Sec	6:06	4:04	3:03	2:26	2:02

NE-1, 16 APR 2026 to 14 MAY 2026

NE-1, 16 APR 2026 to 14 MAY 2026