

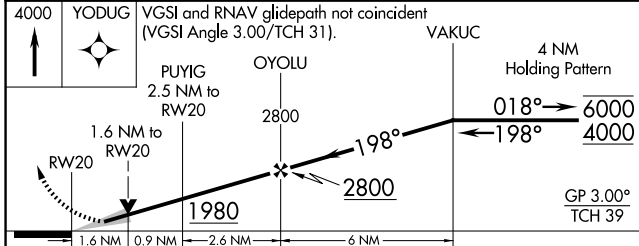
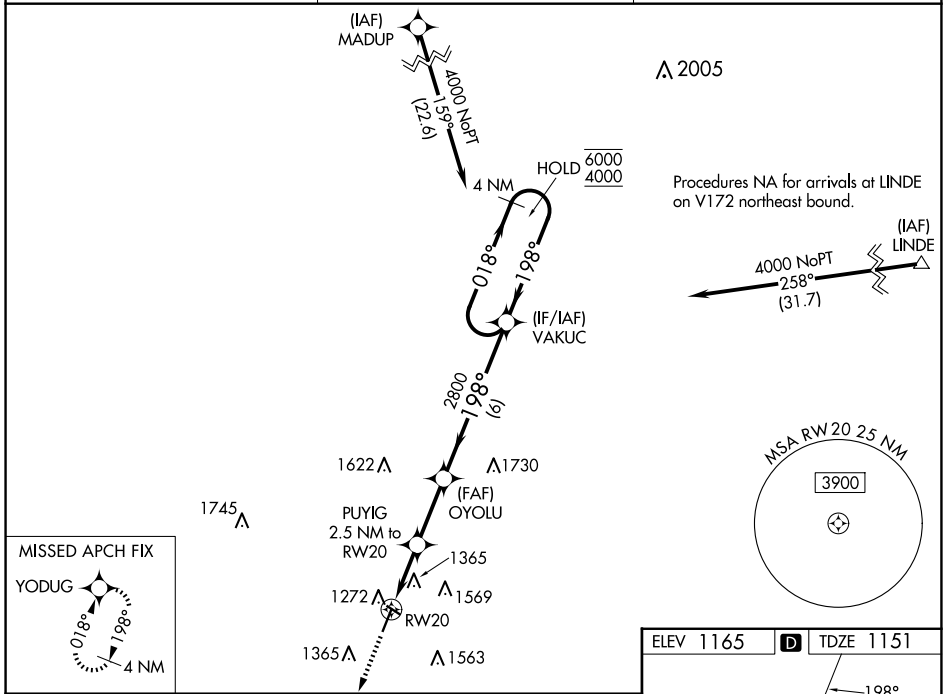
WAAS CH <b>82528</b> <b>W20A</b>	APP CRS <b>198°</b>	Rwy Idg TDZE Apt Elev	<b>5000</b> <b>1151</b> <b>1165</b>
--	------------------------	-----------------------------	---

# RNAV (GPS) RWY 20

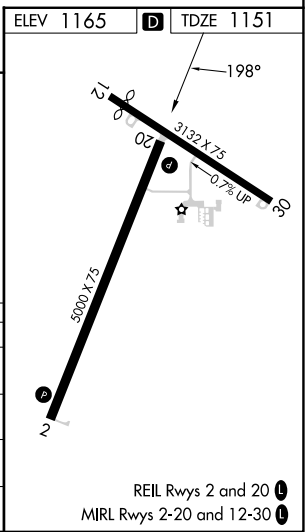
ATLANTIC MUNI (AIO)

RNP APCH - GPS.	MISSED APPROACH: Climb to 4000 direct YODUG and hold, continue climb-in-hold to 4000.
<p><b>⚠</b> Circling Rwy 12, 30 NA at night. For uncompensated Baro-VNAV systems, LNAV/VNAV NA below -17°C or above 54°C.</p>	

AWOS-3 <b>127.825</b>	MINNEAPOLIS CENTER <b>119.6 290.4</b>	UNICOM <b>122.7 (CTAF)</b>
--------------------------	--	-------------------------------



CATEGORY	A	B	C	D
LPV DA	1447-1		296 (300-1)	NA
LNAV/VNAV DA	1733-1¾		582 (600-1¾)	NA
LNAV MDA	1680-1	529 (600-1)	1680-1½ 529 (600-1½)	NA
CIRCLING	1760-1 595 (600-1)	1920-1 755 (800-1)	1920-2¼ 755 (800-2¼)	NA



REIL Rwy 2 and 20  
MIRL Rwy 2-20 and 12-30

NC-3, 16 APR 2026 to 14 MAY 2026

NC-3, 16 APR 2026 to 14 MAY 2026