

LOC I-CPS 109.1	APP CRS 302°	Rwy Ldg TDZE Apt Elev	7002 411 413
---------------------------	------------------------	-----------------------------	---

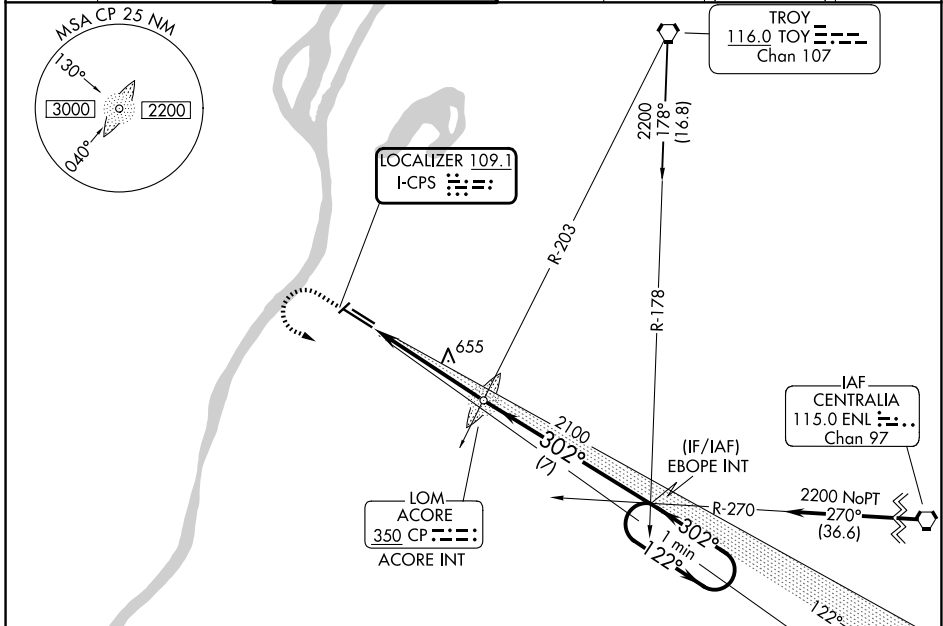
ILS or LOC RWY 30L

ST LOUIS DOWNTOWN (CPS)

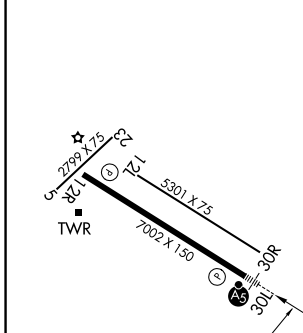
⚠ When local altimeter setting not received, use St Louis Lambert Intl altimeter setting: increase DA to 674 feet, increase all MDAs 80 feet and visibility S-LOC 30L Cats C/D and Circling Cat C ¼ SM. For inop ALS when using St Louis Lambert Intl altimeter setting, increase S-ILS 30L visibility ¼ SM. Circling Rwy 5 NA at night.

MALSR MISSED APPROACH: Climb to 1400 then climbing left turn to 2200 on heading 080° and on I-CPS SE course (122°) to EBOPE INT and hold.

ATIS 121.45	ST LOUIS APP CON 123.7 371.875	DOWNTOWN TOWER * 119.925 (CTAF) 0 379.3	GND CON 121.8	CLNC DEL 118.275	CLNC DEL 121.8 (When twr closed)	UNICOM 122.95
-----------------------	--	---	-------------------------	----------------------------	---	-------------------------

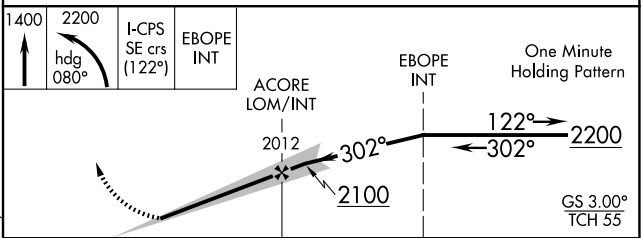


ELEV 413	D	TDZE 411
----------	----------	----------



HIRL Rwy 12R-30L
REIL Rwys 12L and 12R
REIL Rwy 30R
MIRL Rwys 5-23 and 12L-30R
FAF to MAP 4.8 NM

Knots	60	90	120	150	180
Min:Sec	4:48	3:12	2:24	1:55	1:36



CATEGORY	A	B	C	D
S-ILS 30L		611-½	200 (200-½)	
S-LOC 30L	960-½	549 (600-½)	960-1⅛ 549 (600-1⅛)	960-1¼ 549 (600-1¼)
CIRCLING	940-1 527 (600-1)	1120-1 707 (800-1)	1240-2½ 827 (900-1½)	1380-3 967 (1000-3)

EC-3, 16 APR 2026 to 14 MAY 2026

EC-3, 16 APR 2026 to 14 MAY 2026