

(LINDY9.STL) 25331

# LINDBERGH NINE DEPARTURE


AL-5316 (FAA)

ST LOUIS DOWNTOWN (CPS)  
CAHOKIA/ST. LOUIS, ILLINOIS

ST LOUIS DEP CON  
123.7 371.875  
ATIS  
121.45  
CLNC DEL  
118.275  
CLNC DEL  
121.8 (when twr closed)  
GND CON  
121.8  
DOWNTOWN TOWER\*  
119.925 379.3

DME and RADAR required.

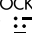
**TOP ALTITUDE:  
ASSIGNED BY ATC**


ST. LOUIS  
117.4 STL   
Chan 121

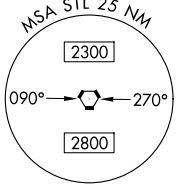
VICHY  
117.7 VIH   
Chan 124

### TAKEOFF MINIMUMS

Rwys 5, 12L/R, 23, 30R: Standard.  
Rwy 30L: 400-2½ or standard with minimum  
climb of 225'/NM to 900.

LITTLE ROCK  
115.1 LIT   
Chan 98

WALNUT RIDGE  
114.5 ARG   
Chan 92



(CONTINUED ON FOLLOWING PAGE)

NOTE: Chart not to scale.

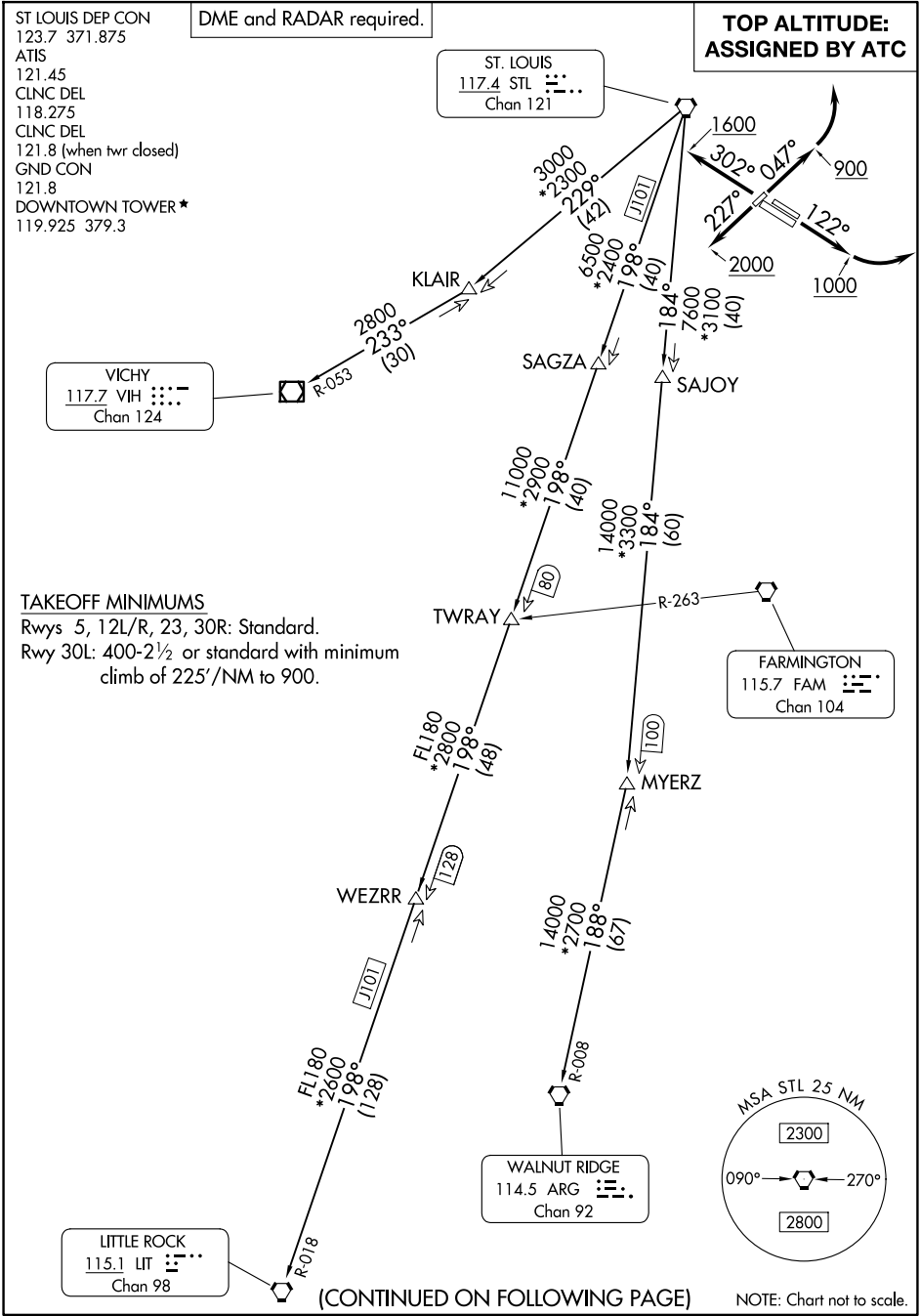
# LINDBERGH NINE DEPARTURE

(LINDY9.STL) 27NOV25

CAHOKIA/ST. LOUIS, ILLINOIS  
ST LOUIS DOWNTOWN (CPS)

EC-3, 16 APR 2026 to 14 MAY 2026

EC-3, 16 APR 2026 to 14 MAY 2026





DEPARTURE ROUTE DESCRIPTION

TAKEOFF RUNWAY 5: Climb on heading 047° to 900 before turning left, thence . . . .

TAKEOFF RUNWAYS 12L/R: Climb on heading 122° to 1000 before turning left, thence . . . .

TAKEOFF RUNWAY 23: Climb on heading 227° to 2000 before turning, thence . . . .

TAKEOFF RUNWAYS 30L/R: Climb on heading 302° to 1600 before turning, thence . . . .

. . . . for RADAR vectors to appropriate route. Maintain ATC assigned altitude. Expect filed altitude 10 minutes after departure.

LITTLE ROCK TRANSITION (LINDY9.LIT): From over STL VORTAC on STL R-198 and LIT R-018 to LIT VORTAC.

MYERZ TRANSITION (LINDY9.MYERZ): From over STL VORTAC on STL R-184 to MYERZ.

VICHY TRANSITION (LINDY9.VIH): From over STL VORTAC on STL R-229 and VIH R-053 to VIH VOR/DME.

WALNUT RIDGE TRANSITION (LINDY9.ARG): From over STL VORTAC on STL R-184 and ARG R-008 to ARG VORTAC.

EC-3, 16 APR 2026 to 14 MAY 2026

EC-3, 16 APR 2026 to 14 MAY 2026